



asics
sound mind, sound body™

AW 23

ASICS
🍁 CANADA

PRUN
v5



SOUND MIND, SOUND BODY™

At ASICS, we believe in the positive impact of sport on the mind. Take our name, an acronym for Anima Sana in Corpore Sano or “a sound mind in a sound body.” Our founding philosophy is perhaps more relevant than ever and we’re recommitting to promoting the positive, uplifting power of sport.

CONTENTS

FOOTWEAR

5
PROTECTION

37
CUSHION

55
BOUNCE

65
SPEED

79
TRAIL

103
CORE RUNNING

115
PACKS

119
KIDS

134
SIZING

asics
sound mind. sound body.™



PROTECTION



FOOTWEAR





GEL-KAYANO® 30



STABILITY



FF BLAST™
PLUS

KNIT COLLAR
CONSTRUCTION

EXTERNAL
HEEL COUNTER

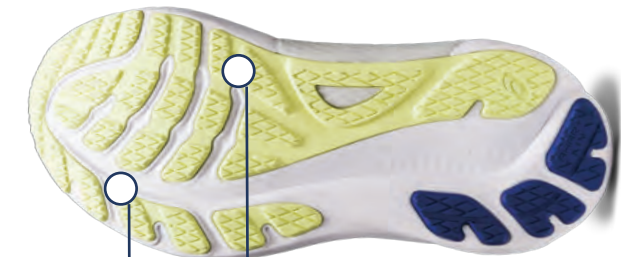
NEW
REARFOOT
PureGEL™

NEW
4D GUIDANCE SYSTEM™
(Men's and Women's)

ORTHOLITE™ X-55
SOCKLINER

ENGINEERED
KNIT UPPER

NEW
FF BLAST™ PLUS ECO



FULL-GROUND
CONTACT

AHAR™ LOW
DENSITY OUTSOLE



GEL-KAYANO® 30

From 5Ks to full marathons, the GEL-KAYANO® 30 shoe is designed to provide advanced stability and cushioning properties.

The new 4D GUIDANCE SYSTEM™ helps provide adaptive stability. Placed on the inside of the midsole, this adaptive foam helps reposition your arch after each impact for a more supportive stride.

We also updated the midsole with FF BLAST™ PLUS ECO cushioning. With approx. 24% bio-based content, this material helps create cloud-like softness in every step.

PureGEL™ technology is strategically positioned below the heel and is 65% softer than standard GEL® technology. Now you can make your distance training feel surprisingly smooth.

FEATURES

Engineered stretch knit upper improves breathability

External heel counter helps keep the foot stable and provides a more comfortable stride

The 4D GUIDANCE SYSTEM™ feature helps create adaptive stability for a more balanced stride

Rearfoot PureGEL™ technology improves impact absorption and creates a softer feeling at footstrike

FF BLAST™ PLUS ECO cushioning is made with approx. 24% bio-based content and helps provide cloud-like comfort

OrthoLite™ X-55 sockliner improves comfort

Reflective details improve visibility

AHARPLUS™ heel plug improves the outsole durability

At least 70% of the shoe's main upper material is made with recycled materials to reduce waste and carbon emissions

The sockliner is produced with the solution dyeing process that reduces water usage by approximately 33% and carbon emissions by approximately 45% compared to the conventional dyeing technology



GEL-KAYANO® 30 - WOMEN'S

STACK HEIGHT: 39mm-29mm // DROP: 10mm // WEIGHT: 9.3oz/263g*

Intro Date: 07/01/2023

M.S.R.P.: \$220.00

z00121z

Size: 5-12,13



GEL-KAYANO® 30
Style #: 1012B357-003
Style #: 1012B503-003 (D)
Color: BLACK/GLOW YELLOW
EOL: 06/30/2024



GEL-KAYANO® 30
Style #: 1012B357-001
Color: BLACK/BLACK
EOL: 11/30/2023



GEL-KAYANO® 30
Style #: 1012B357-002
Style #: 1012B505-002 (2A)
Style #: 1012B503-002 (D)
Color: BLACK/SHEET ROCK
EOL: 06/30/2024



GEL-KAYANO® 30
Style #: 1012B357-004
Color: BLACK/LILAC HINT
EOL: 06/30/2024



GEL-KAYANO® 30
Style #: 1012B357-402
Color: GRIS BLUE/LIME GREEN
EOL: 11/30/2023



GEL-KAYANO® 30
Style #: 1012B357-020
Color: PIEDMONT GREY/GRIS BLUE
EOL: 11/30/2023



GEL-KAYANO® 30
Style #: 1012B357-700
Color: ROSE DUST/LIGHT GARNET
EOL: 11/30/2023

GEL-KAYANO® 30

From 5Ks to full marathons, the GEL-KAYANO® 30 shoe is designed to provide advanced stability and cushioning properties.

The new 4D GUIDANCE SYSTEM™ helps provide adaptive stability. Placed on the inside of the midsole, this adaptive foam helps reposition your arch after each impact for a more supportive stride.

We also updated the midsole with FF BLAST™ PLUS ECO cushioning. With approx. 24% bio-based content, this material helps create cloud-like softness in every step.

PureGEL™ technology is strategically positioned below the heel and is 65% softer than standard GEL® technology. Now you can make your distance training feel surprisingly smooth.

FEATURES

Engineered stretch knit upper improves breathability

External heel counter helps keep the foot stable and provides a more comfortable stride

The 4D GUIDANCE SYSTEM™ feature helps create adaptive stability for a more balanced stride

Rearfoot PureGEL™ technology improves impact absorption and creates a softer feeling at footstrike

FF BLAST™ PLUS ECO cushioning is made with approx. 24% bio-based content and helps provide cloud-like comfort

OrthoLite™ X-55 sockliner improves comfort

Reflective details improve visibility

AHARPLUS™ heel plug improves the outsole durability

At least 70% of the shoe's main upper material is made with recycled materials to reduce waste and carbon emissions

The sockliner is produced with the solution dyeing process that reduces water usage by approximately 33% and carbon emissions by approximately 45% compared to the conventional dyeing technology



GEL-KAYANO® 30 - MEN'S

STACK HEIGHT: 40mm-30mm // DROP: 10mm // WEIGHT: 10.7oz/303g*

Intro Date: 07/01/2023

M.S.R.P.: \$220.00

z00121z

Size: 6-13,14,15,16



GEL-KAYANO® 30
Style #: 1011B548-003
Style #: 1011B685-003 (2E)
Color: BLACK/GLOW YELLOW
EOL: 11/30/2023



GEL-KAYANO® 30
Style #: 1011B548-001
Color: BLACK/BLACK
EOL: 06/30/2024



GEL-KAYANO® 30
Style #: 1011B548-002
Style #: 1011B685-002 (2E)
Style #: 1011B690-002 (4E)
Color: BLACK/SHEET ROCK
EOL: 11/30/2023
EOL: 06/30/2024 (2E, 4E)



GEL-KAYANO® 30
Style #: 1011B548-600
Color: ANTIQUE RED/OCEAN HAZE
EOL: 11/30/2023



GEL-KAYANO® 30
Style #: 1011B548-403
Color: FRENCH BLUE/NEON LIME
EOL: 11/30/2023



GEL-KAYANO® 30
Style #: 1011B548-402
Color: DEEP OCEAN/WHITE
EOL: 11/30/2023



GEL-KAYANO® 30
Style #: 1011B548-020
Color: CARRIER GREY/PIEDMONT GREY
EOL: 11/30/2023

GEL-KAYANO® 30 LITE-SHOW

From 5Ks to full marathons, the GEL-KAYANO® 30 LITE-SHOW™ shoe is designed to provide advanced stability and cushioning properties. This version is equipped with reflective accents that help improve your visibility when you're running in low-light conditions.

The new 4D GUIDANCE SYSTEM™ helps provide adaptive stability. Placed on the inside of the midsole, this adaptive foam helps reposition your arch after each impact for a more supportive stride.

We also updated the midsole with FF BLAST™ PLUS ECO cushioning. With approx. 24% bio-based content, this material helps create cloud-like softness in every step.

PureGEL™ technology is strategically positioned below the heel and is 65% softer than standard GEL® technology. Now you can make your distance training feel surprisingly smooth.

FEATURES

External heel counter helps keep the foot stable and provides a more comfortable stride
The 4D GUIDANCE SYSTEM™ feature helps create adaptive stability for a more balanced stride
Rearfoot PureGEL™ technology improves impact absorption and creates a softer feeling at footstrike
FF BLAST™ PLUS ECO cushioning is made with approx. 24% bio-based content and helps provide cloud-like comfort
OrthoLite™ X-55 sockliner improves comfort
Reflective details improve visibility
AHARPLUS™ heel plug improves the outsole durability
At least 70% of the shoe's main upper material is made with recycled materials to reduce waste and carbon emissions
The sockliner is produced with the solution dyeing process that reduces water usage by approximately 33% and carbon emissions by approximately 45% compared to the conventional dyeing technology



GEL-KAYANO® 30 LITE-SHOW - WOMEN'S

Intro Date: 10/01/2023

M.S.R.P.: \$230.00



GEL-KAYANO® 30 LITE-SHOW
Style #: 1012B576-001
Color: BLACK/PURE SILVER
EOL: 12/31/2023

GEL-KAYANO® 30 LITE-SHOW - MEN'S

z05621z

Women's Size: 5-12,13 | Men's Size: 6-13,14,15,16



GEL-KAYANO® 30 LITE-SHOW
Style #: 1011B765-001
Color: BLACK/PURE SILVER
EOL: 12/31/2023

STACK HEIGHT: 39mm-29mm // DROP: 10mm // WEIGHT: 9.3oz/265g*

STACK HEIGHT: 40mm-30mm // DROP: 10mm // WEIGHT: 10.9oz/310g*



GT-2000® 12



STABILITY



FF BLAST™
PLUS

NEW / LEAN BACK
ACHILLES CONSTRUCTION

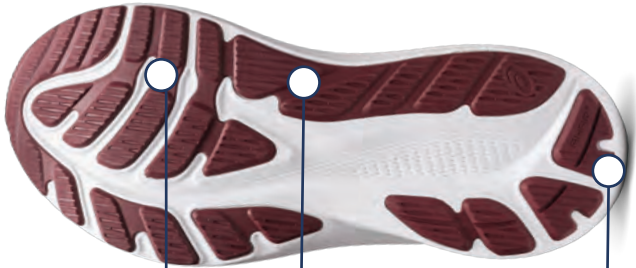


NEW / ENGINEERED
MESH UPPER



NEW /
PureGEL™

NEW /
FF BLAST™ PLUS



FULL-GROUND
CONTACT DESIGN

AHARPLUS™

NEW / AHAR™
LOW DENSITY OUTSOLE

GT-2000® 12

The GT-2000® 12 shoe is a versatile stability trainer that's functional for various distances. We've reimagined this workhorse running style with less weight and a smoother heel-to-toe transition.

The midsole is updated with a full-length FF BLAST™ PLUS cushioning unit and PureGEL™ technology. These features help provide a more energized toe-off with cloud-like softness underfoot.

Meanwhile, the 3D GUIDANCE SYSTEM™ consists of wider basenets and an increased heel bevel and forefoot flare. As a result, you'll experience a silky-smooth transition from footstrike to toe-off.

FEATURES

Jacquard mesh upper offers a supportive and comfortable foothold

At least 50% of the shoe's main upper material is made with recycled content to reduce waste and carbon emissions

The sockliner is produced with the solution dyeing process that reduces water usage by approximately 33% and carbon emissions by approximately 45% compared to the conventional dyeing technology

3D GUIDANCE SYSTEM™ helps provide advanced stability for a smoother stride

Rearfoot PureGEL™ technology improves impact absorption and creates a softer feeling at footstrike

FF BLAST™ PLUS cushioning provides lightweight impact absorption and a responsive rebound

LITETRUSST™ technology improves medial support and midfoot integrity

OrthoLite™ X-30 sockliner provides soft step-in comfort

AHARPLUS™ heel plug rubber helps improve durability

AHAR® LOW-DENSITY outsole material helps improve resistance against wear

ASICS LITE™ rubber is lighter and stronger than standard outsole rubbers. Bio-based cellulose nanofiber is also partially used

Reflective details are designed to improve visibility in low-light settings



GT-2000® 12 - WOMEN'S

STACK HEIGHT: 35mm-27mm // DROP: 8mm // WEIGHT: 8.3oz/235g*

Intro Date: 09/01/2023

M.S.R.P.: \$180.00

z00990z

Size: 5-13



GT-2000® 12
Style #: 1012B506-300
Style #: 1012B504-300 (D)
Color: PURE AQUA/WHITE
EOL: 08/31/2024



GT-2000® 12
Style #: 1012B506-001
Color: BLACK/BLACK
EOL: 11/30/2023



GT-2000® 12
Style #: 1012B506-002
Style #: 1012B509-002 (2A)
Style #: 1012B504-002 (D)
Color: BLACK/CARRIER GREY
EOL: 08/31/2024
EOL: 11/30/2023 (2A)



GT-2000® 12
Style #: 1012B506-022
Color: TARMAC/BLACK
EOL: 11/30/2023



GT-2000® 12
Style #: 1012B506-020
Color: TARMAC/PURE SILVER
EOL: 08/31/2024



GT-2000® 12
Style #: 1012B506-600
Color: LIGHT GARNET/BRISKET RED
EOL: 11/30/2023

GT-2000® 12

The GT-2000® 12 shoe is a versatile stability trainer that's functional for various distances. We've reimagined this workhorse running style with less weight and a smoother heel-to-toe transition.

The midsole is updated with a full-length FF BLAST™ PLUS cushioning unit and PureGEL™ technology. These features help provide a more energized toe-off with cloud-like softness underfoot.

Meanwhile, the 3D GUIDANCE SYSTEM™ consists of wider basenets and an increased heel bevel and forefoot flare. As a result, you'll experience a silky-smooth transition from footstrike to toe-off.

FEATURES

Jacquard mesh upper offers a supportive and comfortable foothold

At least 50% of the shoe's main upper material is made with recycled content to reduce waste and carbon emissions

The sockliner is produced with the solution dyeing process that reduces water usage by approximately 33% and carbon emissions by approximately 45% compared to the conventional dyeing technology

3D GUIDANCE SYSTEM™ helps provide advanced stability for a smoother stride

Rearfoot PureGEL™ technology improves impact absorption and creates a softer feeling at footstrike

FF BLAST™ PLUS cushioning provides lightweight impact absorption and a responsive rebound

LITETRUSST™ technology improves medial support and midfoot integrity

OrthoLite™ X-30 sockliner provides soft step-in comfort

AHARPLUS™ heel plug rubber helps improve durability

AHAR® LOW-DENSITY outsole material helps improve resistance against wear

ASICS LITE™ rubber is lighter and stronger than standard outsole rubbers. Bio-based cellulose nanofiber is also partially used

Reflective details are designed to improve visibility in low-light settings



GT-2000® 12 - MEN'S

STACK HEIGHT: 36mm-28mm // DROP: 8mm // WEIGHT: 9.5oz/270g*

Intro Date: 09/01/2023

M.S.R.P.: \$180.00

z00990z

Size: 6-14,15,16,17



GT-2000® 12
Style #: 1011B691-401
Style #: 1011B689-401 (2E)
Color: FRENCH BLUE/FOGGY TEAL
EOL: 08/31/2024



GT-2000® 12
Style #: 1011B691-001
Color: BLACK/BLACK
EOL: 11/30/2023



GT-2000® 12
Style #: 1011B691-002
Style #: 1011B689-002 (2E)
Style #: 1011B686-002 (4E)
Color: BLACK/CARRIER GREY
EOL: 08/31/2024



GT-2000® 12
Style #: 1011B691-003
Color: BLACK/GLOW YELLOW
EOL: 11/30/2023



GT-2000® 12
Style #: 1011B691-020
Color: METROPOLIS/BLACK
EOL: 11/30/2023

GT-2000® 12 LITE-SHOW

The GT-2000® 12 LITE-SHOW™ shoe is a versatile stability trainer that's functional for various distances. This version is equipped with reflective accents that help improve your visibility when you're running in low-light conditions.

The midsole is updated with a full-length FF BLAST™ PLUS cushioning unit and PureGEL™ technology. These features help provide a more energized toe-off with cloud-like softness underfoot.

Meanwhile, the 3D GUIDANCE SYSTEM™ consists of wider basenets and an increased heel bevel and forefoot flare. As a result, you'll experience a silky-smooth transition from footstrike to toe-off

FEATURES

At least 50% of the shoe's main upper material is made with recycled content to reduce waste and carbon emissions

The sockliner is produced with the solution dyeing process that reduces water usage by approximately 33% and carbon emissions by approximately 45% compared to the conventional dyeing technology

Rearfoot PureGEL™ technology improves impact absorption and creates a softer feeling at footstrike

FF BLAST™ PLUS cushioning provides lightweight impact absorption and a responsive rebound

3D GUIDANCE SYSTEM™ helps provide advanced stability for a smoother stride

OrthoLite™ X-30 sockliner provides soft step-in comfort

AHARPLUS™ heel plug rubber helps improve durability

AHAR® LOW-DENSITY outsole material helps improve resistance against wear

ASICS LITE™ rubber is lighter and stronger than standard outsole rubbers. Bio-based cellulose nanofiber is also partially used

Reflective details are designed to improve visibility in low-light settings



GT-2000® 12 LITE-SHOW - WOMEN'S

Intro Date: 10/01/2023

M.S.R.P.: \$190.00



GT-2000® 12 LITE-SHOW
Style #: 1012B578-001
Color: BLACK/PURE SILVER
EOL: 12/31/2023

GT-2000® 12 LITE-SHOW - MEN'S

z05401z

Women's Size: 5-13 | Men's Size: 6-14,15,16,17



GT-2000® 12 LITE-SHOW
Style #: 1011B766-001
Color: BLACK/PURE SILVER
EOL: 12/31/2023

STACK HEIGHT: 36mm-28mm // DROP: 8mm // WEIGHT: 8.3oz/236g*

STACK HEIGHT: 37mm-29mm // DROP: 8mm // WEIGHT: 9.6oz/273g*

GT-2000® 11 GTX

The GT-2000® 11 GTX shoe is designed with a GORE-TEX™ membrane that helps keep your feet warm and dry when running in wet or snowy conditions. We've updated the underfoot cushioning to make it feel more comfortable and energetic.

Key adjustments in the midsole include our FF BLAST™ cushioning. This soft material helps promote softer landings and a responsive rebound.

LITETRUSST™ technology is positioned on the inside of the midsole to improve stability. It helps prevent your foot from rolling too far inward, setting you up for a smoother stride.

FEATURES

GORE-TEX™ membrane helps prevent rain and snow from entering the shoe's interior

At least 20% of the shoe's main upper material is made with recycled content to reduce waste and carbon emissions

The sockliner is produced with the solution dyeing process that reduces water usage by approximately 33% and carbon emissions by approximately 45% compared to the conventional dyeing technology

Rearfoot GEL® technology improves impact absorption and creates a softer feeling at footstrike

FF BLAST™ technology provides lightweight cushioning and a responsive rebound

FLYTEFOAM™ cushioning helps keep the shoe lightweight

LITETRUSST™ technology improves medial support and midfoot integrity

OrthoLite™ X-30 sockliner provides soft step-in comfort

AHARPLUS™ heel plug rubber helps improve durability

ASICS LITE rubber is lighter and stronger than standard outsole rubbers. Bio-based cellulose nanofiber is also partially used

Reflective details are designed to improve visibility in low-light settings



GT-2000® 11 GTX - WOMEN'S

Intro Date: 06/01/2023

M.S.R.P.: \$210.00

GT-2000® 11 GTX - MEN'S

z05511z

Women's Size: 5-13 | Men's Size: 6-14,15,16,17



GT-2000® 11 GTX
Style #: 1012B304-003
Color: BLACK/INDIGO BLUE
EOL: 08/31/2023



GT-2000® 11 GTX
Style #: 1011B477-002
Color: BLACK/INK TEAL
EOL: 08/31/2023

STACK HEIGHT: 23mm-15mm // DROP: 8mm // WEIGHT: 0oz/0g*

STACK HEIGHT: 23mm-15mm // DROP: 8mm // WEIGHT: 0oz/0g*

GT-2000® 11

The GT-2000™ 11 shoe is a versatile stability trainer that's functional for various distances. We've updated the underfoot cushioning to make it feel more comfortable and energetic.

Key adjustments in the midsole include our FF BLAST™ cushioning. This soft material helps promote softer landings and a responsive rebound.

LITETRUSST™ technology is positioned on the inside of the midsole to improve stability. It helps prevent your foot from rolling too far inward, setting you up for a smoother stride.

FEATURES

Jacquard mesh upper offers a supportive and comfortable foothold

At least 50% of the shoe's main upper material is made with recycled content to reduce waste and carbon emissions

The sockliner is produced with the solution dyeing process that reduces water usage by approximately 33% and carbon emissions by approximately 45% compared to the conventional dyeing technology

Rearfoot GEL® technology improves impact absorption and creates a softer feeling at footstrike

FF BLAST™ technology provides lightweight cushioning and a responsive rebound

FLYTEFOAM® cushioning helps keep the shoe lightweight

LITETRUSST™ technology improves medial support and midfoot integrity

OrthoLite™ X-30 sockliner provides soft step-in comfort

AHARPLUS™ heel plug rubber helps improve durability

ASICS LITE rubber is lighter and stronger than standard outsole rubbers. Bio-based cellulose nanofiber is also partially used

Reflective details are designed to improve visibility in low-light settings



GT-2000® 11 - WOMEN'S

Intro Date: **06/01/2023**

M.S.R.P.: **\$180.00**



CO

GT-2000® 11
Style #: 1012B271-005
Color: BLACK/BLACK
EOL: 08/31/2023



CO 2A D

GT-2000® 11
Style #: 1012B271-004
Style #: 1012B301-004 (2A)
Style #: 1012B303-004 (D)
Color: BLACK/WHITE
EOL: 08/31/2023



CO

GT-2000® 11
Style #: 1012B271-006
Color: BLACK/PURE SILVER
EOL: 08/31/2023



CO

GT-2000® 11
Style #: 1012B271-021
Color: PIEDMONT GREY/REBORN BLUE
EOL: 08/31/2023

GT-2000® 11 - MEN'S

z00990z

Women's Size: **5-13** | Men's Size: **6-14,15,16,17**



CO

GT-2000® 11
Style #: 1011B441-005
Color: BLACK/BLACK
EOL: 08/31/2023



CO 2E 4E

GT-2000® 11
Style #: 1011B441-004
Style #: 1011B475-004 (2E)
Style #: 1011B476-004 (4E)
Color: BLACK/WHITE
EOL: 08/31/2023



CO 2E

GT-2000® 11
Style #: 1011B441-006
Style #: 1011B475-006 (2E)
Color: BLACK/SUN PEACH
EOL: 08/31/2023



CO

GT-2000® 11
Style #: 1011B441-402
Color: MIDNIGHT/OLIVE OIL
EOL: 08/31/2023

STACK HEIGHT: **22mm-14mm** // DROP: **8mm** // WEIGHT: **8.3oz/235g***

STACK HEIGHT: **23mm-15mm** // DROP: **8mm** // WEIGHT: **9.7oz/275g***



GT-1000® 12



GT-1000® 12 GTX

Our approach for the GT-1000® 12 GTX shoe was to modernize the shape and make it more comfortable. It's designed for an active lifestyle and is functional for running or wearing it to the gym.

With GORE-TEX™ paneling on the upper, this shoe helps prevent rain and snow from entering the shoe's interior. These features are also met with a tongue wing construction that helps provide a more supportive fit.

LITETRUSST™ technology is placed on the midsole's inside angle to reduce pronation. It helps produce a more supportive stride while keeping overpronation at bay.

FEATURES

GORE-TEX™ membrane helps prevent rain and snow from entering the shoe's interior
Tongue wing construction helps create a more supportive fit
External heel counter improves the fit and helps increase stability
LITETRUSST™ technology improves medial support and midfoot integrity
FLYTEFOAM™ cushioning provides lightweight impact absorption
Rearfoot GEL® technology improves impact absorption and creates a softer feeling at footstrike
OrthoLite™ X-30 sockliner provides soft step-in comfort



GT-1000® 12 GTX - WOMEN'S

Intro Date: 06/01/2023

M.S.R.P.: \$190.00



GT-1000® 12 GTX
Style #: 1012B508-001
Color: BLACK/HOT PINK
EOL: 11/30/2023

GT-1000® 12 GTX - MEN'S

z05401z

Women's Size: 5-12 | Men's Size: 6-13,14,15,16,17



GT-1000® 12 GTX
Style #: 1011B684-001
Color: BLACK/HOT PINK
EOL: 11/30/2023

STACK HEIGHT: 31.5mm-23.5mm // DROP: 8mm // WEIGHT: 9.5oz/269g*

STACK HEIGHT: 32.5mm-24.5mm // DROP: 8mm // WEIGHT: 10.7oz/303g*

GT-1000® 12

Our approach for the GT-1000® 12 shoe was to modernize the shape and make it more comfortable. It's designed for an active lifestyle and is functional for running or wearing it to the gym.

The shoe is reimagined with a soft mesh upper, a new heel shape, and a more comfortable sockliner. These features are also met with a tongue wing construction that helps provide a more supportive fit.

LITETRUSSTM technology is placed on the midsole's inside angle to reduce pronation. It helps produce a more supportive stride while keeping overpronation at bay.

FEATURES

Engineered mesh upper improves breathability and wraps the foot with a soft feel
Tongue wing construction helps create a more supportive fit
External heel counter improves the fit and helps increase stability
LITETRUSSTM technology improves medial support and midfoot integrity
FLYTEFOAM™ cushioning provides lightweight impact absorption
Rearfoot GEL® technology improves impact absorption and creates a softer feeling at footstrike
OrthoLite™ X-30 sockliner provides soft step-in comfort



GT-1000® 12 - WOMEN'S

Intro Date: **06/01/2023**

M.S.R.P.: **\$150.00**



D

GT-1000® 12

Style #: 1012B450-402
Style #: 1012B447-402 (D)
Color: EGGPLANT/AQUAMARINE
EOL: 05/31/2024



D

GT-1000® 12

Style #: 1012B450-001
Style #: 1012B447-001 (D)
Color: BLACK/CARRIER GREY
EOL: 05/31/2024



GT-1000® 12

Style #: 1012B450-002
Color: BLACK/GLOW YELLOW
EOL: 11/30/2023



GT-1000® 12

Style #: 1012B450-700
Color: PALE APRICOT/LIGHT GARNET
EOL: 11/30/2023

GT-1000® 12 - MEN'S

z05280z

Women's Size: **5-12** | Men's Size: **6-13,14,15,16,17**



2E

GT-1000® 12

Style #: 1011B631-401
Style #: 1011B634-401 (2E)
Color: STORM BLUE/DUNE
EOL: 05/31/2024
EOL: 11/30/2023 (2E)



4E

GT-1000® 12

Style #: 1011B631-001
Style #: 1011B629-001 (4E)
Color: BLACK/CARRIER GREY
EOL: 05/31/2024



GT-1000® 12

Style #: 1011B631-002
Color: BLACK/GLOW YELLOW
EOL: 11/30/2023



GT-1000® 12

Style #: 1011B631-402
Color: FRENCH BLUE/BRIGHT ORANGE
EOL: 11/30/2023

STACK HEIGHT: **31.5mm-23.5mm** // DROP: **8mm** // WEIGHT: **8.3oz/235g***

STACK HEIGHT: **32.5mm-24.5mm** // DROP: **8mm** // WEIGHT: **9.5oz/268g***

GT-1000® 12 LITE-SHOW

Our approach for the GT-1000® 12 LITE-SHOW™ shoe was to modernize the shape and make it more comfortable. This version is equipped with reflective accents that help improve your visibility when you're running in low-light conditions.

The shoe is reimagined with a soft mesh upper, a new heel shape, and a more comfortable sockliner. These features are also met with a tongue wing construction that helps provide a more supportive fit.

LITETRUSSTM technology is placed on the midsole's inside angle to reduce pronation. It helps produce a more supportive stride while keeping overpronation at bay.

FEATURES

Tongue wing construction helps create a more supportive fit

External heel counter improves the fit and helps increase stability

LITETRUSSTM technology improves medial support and midfoot integrity

Reflective details are designed to improve visibility in low-light conditions

FLYTEFOAM™ cushioning provides lightweight impact absorption

Rearfoot GEL® technology improves impact absorption and creates a softer feeling at footstrike

OrthoLite™ X-30 sockliner provides soft step-in comfort



GT-1000® 12 LITE-SHOW - WOMEN'S

Intro Date: 10/01/2023

M.S.R.P.: \$160.00



GT-1000® 12 LITE-SHOW
Style #: 1012B573-001
Color: BLACK/PURE SILVER
EOL: 11/30/2023

GT-1000® 12 LITE-SHOW - MEN'S

z00880z

Women's Size: 5-12 | Men's Size: 6-13,14,15,16,17



GT-1000® 12 LITE-SHOW
Style #: 1011B762-001
Color: BLACK/PURE SILVER
EOL: 11/30/2023

STACK HEIGHT: 31.5mm-23.5mm // DROP: 8mm // WEIGHT: 8.5oz/241g*

STACK HEIGHT: 32.5mm-24.5mm // DROP: 8mm // WEIGHT: 9.5oz/270g*

LEGENDS - PROTECTION WIDTH SUMMARY - WOMEN'S



2A D

GEL-KAYANO® 30

Style #: 1012B505-002 (2A)
Style #: 1012B503-002 (D)
Color: BLACK/SHEET ROCK
EOL: 06/30/2024



D

GEL-KAYANO® 30

Style #: 1012B503-003 (D)
Color: BLACK/GLOW YELLOW
EOL: 06/30/2024



2A D

GT-2000® 12

Style #: 1012B509-002 (2A)
Style #: 1012B504-002 (D)
Color: BLACK/CARRIER GREY
EOL: 08/31/2024
EOL: 11/30/2023 (2A)



D

GT-2000® 12

Style #: 1012B504-300 (D)
Color: PURE AQUA/WHITE
EOL: 08/31/2024



CO 2A D

GT-2000® 11

Style #: 1012B301-004 (2A)
Style #: 1012B303-004 (D)
Color: BLACK/WHITE
EOL: 08/31/2023



D

GT-1000® 12

Style #: 1012B447-402 (D)
Color: EGGPLANT/AQUAMARINE
EOL: 05/31/2024



D

GT-1000® 12

Style #: 1012B447-001 (D)
Color: BLACK/CARRIER GREY
EOL: 05/31/2024

LEGENDS - PROTECTION WIDTH SUMMARY - MEN'S



2E 4E

GEL-KAYANO® 30

Style #: 1011B685-002 (2E)
Style #: 1011B690-002 (4E)
Color: BLACK/SHEET ROCK
EOL: 06/30/2024



2E

GEL-KAYANO® 30

Style #: 1011B685-003 (2E)
Color: BLACK/GLOW YELLOW
EOL: 11/30/2023



2E

GT-2000® 12

Style #: 1011B689-401 (2E)
Color: FRENCH BLUE/FOGGY TEAL
EOL: 08/31/2024



2E 4E

GT-2000® 12

Style #: 1011B689-002 (2E)
Style #: 1011B686-002 (4E)
Color: BLACK/CARRIER GREY
EOL: 08/31/2024



CO 2E 4E

GT-2000® 11

Style #: 1011B475-004 (2E)
Style #: 1011B476-004 (4E)
Color: BLACK/WHITE
EOL: 08/31/2023



CO 2E

GT-2000® 11

Style #: 1011B475-006 (2E)
Color: BLACK/SUN PEACH
EOL: 08/31/2023



2E

GT-1000® 12

Style #: 1011B634-401 (2E)
Color: STORM BLUE/DUNE
EOL: 05/31/2024
EOL: 11/30/2023 (2E)



4E

GT-1000® 12

Style #: 1011B629-001 (4E)
Color: BLACK/CARRIER GREY
EOL: 05/31/2024

GLUSHION VOI/HION



FOOTWEAR





GEL-KINSEI[®] MAX



CUSHION



GEL



PROPULSION
PLATE

NEW / LEAN BACK
ACHILLES CONSTRUCTION

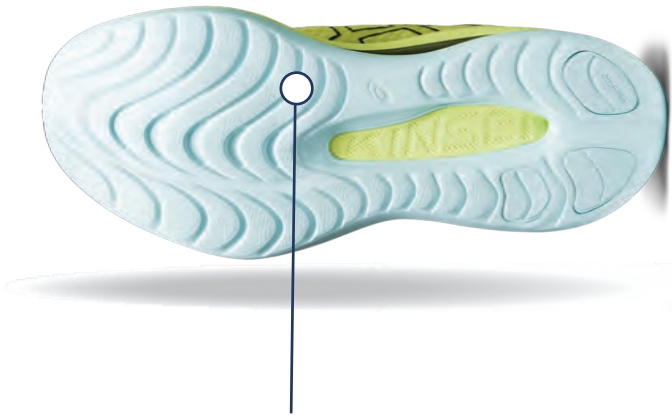
NEW / TPU PLATE

NEW / ENGINEERED
MESH UPPER

NEW /
HYBRID GEL™

NEW /
FF BLAST™ PLUS
ECO

NEW /
RUBBER FOAMING



GEL-KINSEI® MAX

The GEL-KINSEI® MAX trainer takes the experience of running on clouds to the next level. It's been redesigned for runners who want every step to feel like it's oozing with softness.

The tooling is modified with our FF BLAST™ PLUS ECO cushioning for the midsole's top layer. This helps provide cloud-like comfort while creating an energized feel at toe-off.

A TPU midsole plate is positioned in the center of the midsole to provide a more dynamic toe-off. It also works in tandem with the new rubber foaming and HYBRID GEL® technology to help create smoother underfoot transitions.

FEATURES

Engineered mesh upper improves airflow to help your feet keep cool

At least 20% of the shoe's main upper material is made with recycled content to reduce waste and carbon emissions

The sockliner is produced with the solution dyeing process that reduces water usage by approximately 33% and carbon emissions by approximately 45% compared to the conventional dyeing technology

TPU propulsion plate helps redirect the runner's energy forward and creates a faster feel

FF BLAST™ cushioning provides lightweight impact absorption and a responsive rebound

FF BLAST™ PLUS ECO cushioning is made with approx. 24% bio-based content and helps provide cloud-like comfort

Rearfoot and forefoot GEL® technology improves impact absorption and creates a softer feeling at footstrike

E.V.A sockliner offers soft step-in comfort

Reflective details are designed to improve visibility in low-light conditions

Strategic outsole engineering improves grip and durability

AHARPLUS™ heel plug improves durability



GEL-KINSEI® MAX - WOMEN'S

Intro Date: 08/01/2023

M.S.R.P.: \$250.00

GEL-KINSEI® MAX - MEN'S

z05731z

Women's Size: 5-11 | Men's Size: 6-13,14,15



GEL-KINSEI® MAX
Style #: 1012B512-750
Color: GLOW YELLOW/BLACK
EOL: 11/30/2023



GEL-KINSEI® MAX
Style #: 1011B696-750
Color: GLOW YELLOW/BLACK
EOL: 11/30/2023



GEL-KINSEI® MAX
Style #: 1012B512-001
Color: BLACK/LILAC HINT
EOL: 11/30/2023



GEL-KINSEI® MAX
Style #: 1011B696-400
Color: FRENCH BLUE/BRIGHT ORANGE
EOL: 11/30/2023

STACK HEIGHT: 40mm-32mm // DROP: 8mm // WEIGHT: 10.1oz/287g*

STACK HEIGHT: 41mm-33mm // DROP: 8mm // WEIGHT: 11.7oz/333g*



CUSHION

GEL-NIMBUS® 25

The GEL-NIMBUS® 25 shoe's soft cushioning properties help you feel like you're landing on clouds. Part of our COLOUR INJECTION pack, this colourway draws inspiration from Van Gogh's paintings and his recognizable brush strokes.

A soft engineered knit upper comfortably wraps your foot while supplying advanced ventilation. Its updated knit collar construction provides better flexibility and extends around the ankle for a more luxurious fit and feel.

The midsole is packed with the most cushioning that the series has offered to date. By using FF BLAST™ PLUS ECO cushioning, this trainer creates a lighter and softer cushioning experience with less of an impact on the environment.

FEATURES

Engineered knit upper wraps the foot with a soft feel while improving breathability

At least 75% of the shoe's main upper material is made with recycled content to reduce waste and carbon emissions

The sockliner is produced with the solution dyeing process that reduces water usage by approximately 33% and carbon emissions by approximately 45% compared to the conventional dyeing technology

PureGEL™ technology improves impact absorption and creates a softer feeling at footstrike

FF BLAST™ PLUS ECO cushioning creates a softer landing and a more responsive toe-off

OrthoLite™ X-55 sockliner improves step-in comfort

Reflective details are designed to improve visibility in low-light conditions

AHAR® outsole rubber improves durability

Trail-specific outsole pattern



GEL-NIMBUS® 25 - WOMEN'S

STACK HEIGHT: 29mm-21mm // DROP: 8mm // WEIGHT: 9.0oz/255g*

Intro Date: 06/01/2023

M.S.R.P.: \$210.00

z05511z

Size: 5-13



GEL-NIMBUS® 25

Style #: 1012B356-004
Style #: 1012B437-004 (D)
Color: BLACK/GLOW YELLOW
EOL: 12/31/2023



GEL-NIMBUS® 25

Style #: 1012B356-002
Color: BLACK/GRAPHITE GREY
EOL: 12/31/2023



GEL-NIMBUS® 25

Style #: 1012B356-001
Style #: 1012B437-001 (D)
Color: BLACK/PURE SILVER
EOL: 12/31/2023



GEL-NIMBUS® 25

Style #: 1012B356-400
Color: INDIGO BLUE/PURE SILVER
EOL: 12/31/2023



GEL-NIMBUS® 25

Style #: 1012B356-700
Color: PAPAYA/DUSTY PURPLE
EOL: 12/31/2023



GEL-NIMBUS® 25

Style #: 1012B356-702
Color: PALE APRICOT/LIGHT GARNET
EOL: 12/31/2023



GEL-NIMBUS® 25

Style #: 1012B356-023
Color: SHEET ROCK/WHITE
EOL: 12/31/2023



GEL-NIMBUS® 25

Style #: 1012B356-105
Color: WHITE/PURE SILVER
EOL: 12/31/2023

GEL-NIMBUS® 25

The GEL-NIMBUS® 25 shoe's soft cushioning properties help you feel like you're landing on clouds. Part of our COLOUR INJECTION pack, this colourway draws inspiration from Van Gogh's paintings and his recognizable brush strokes.

A soft engineered knit upper comfortably wraps your foot while supplying advanced ventilation. Its updated knit collar construction provides better flexibility and extends around the ankle for a more luxurious fit and feel.

The midsole is packed with the most cushioning that the series has offered to date. By using FF BLAST™ PLUS ECO cushioning, this trainer creates a lighter and softer cushioning experience with less of an impact on the environment.

FEATURES

Engineered knit upper wraps the foot with a soft feel while improving breathability

At least 75% of the shoe's main upper material is made with recycled content to reduce waste and carbon emissions

The sockliner is produced with the solution dyeing process that reduces water usage by approximately 33% and carbon emissions by approximately 45% compared to the conventional dyeing technology

PureGEL™ technology improves impact absorption and creates a softer feeling at footstrike

FF BLAST™ PLUS ECO cushioning creates a softer landing and a more responsive toe-off

OrthoLite™ X-55 sockliner improves step-in comfort

Reflective details are designed to improve visibility in low-light conditions

AHAR® outsole rubber improves durability

Trail-specific outsole pattern



GEL-NIMBUS® 25 - MEN'S

STACK HEIGHT: 30mm-22mm // DROP: 8mm // WEIGHT: 10.2oz/290g*

Intro Date: 06/01/2023

M.S.R.P.: \$210.00

z05511z

Size: 5-13



GEL-NIMBUS® 25
Style #: 1011B547-403
Style #: 1011B625-403 (2E)
Color: DEEP OCEAN/BRIGHT ORANGE
EOL: 12/31/2023
EOL: 12/31/2023 (2E)



GEL-NIMBUS® 25
Style #: 1011B547-002
Color: BLACK/BLACK
EOL: 11/30/2023



GEL-NIMBUS® 25
Style #: 1011B547-001
Style #: 1011B625-001 (2E)
Style #: 1011B618-001 (4E)
Color: BLACK/PURE SILVER
EOL: 11/30/2023
EOL: 12/31/2023 (2E, 4E)



GEL-NIMBUS® 25
Style #: 1011B547-004
Color: BLACK/GLOW YELLOW
EOL: 11/30/2023



GEL-NIMBUS® 25
Style #: 1011B547-400
Color: ISLAND BLUE/SUN PEACH
EOL: 11/30/2023



GEL-NIMBUS® 25
Style #: 1011B547-023
Color: PIEDMONT GREY/FOGGY TEAL
EOL: 11/30/2023

GEL-CUMULUS® 25 GTX

Experience a softer feel underfoot with the GEL-CUMULUS® 25 GTX shoe. This neutral everyday trainer is a versatile choice for various running workouts and distances.

With an invisible GORE-TEX™ paneling on the upper, this shoe helps prevent rain and snow from entering the shoe's interior. It's also functional for improving the shoe's fit and making it more breathable.

We've updated the midsole with our new PureGEL™ technology and FF BLAST™ PLUS cushioning. These materials help create softer landings and a more energized toe-off during your training.

FEATURES

FF BLAST™ PLUS cushioning provides lightweight impact absorption and a responsive rebound
PureGEL™ technology helps provide lightweight cushioning and softer landings
The invisible GORE-TEX™ membrane features an improved fit, and better breathability, and helps prevent rain and snow from entering the shoe's interior
The sockliner is produced with the solution dyeing process that reduces water usage by approximately 33% and carbon emissions by approximately 45% compared to the conventional dyeing technology
Reflective details are designed to improve visibility in low-light conditions
At least 75% of the shoe's main upper material is made with recycled content to reduce waste and carbon emissions
OrthoLite™ X-30 sockliner provides soft step-in comfort
Full-ground contact design creates a smoother and more efficient ride
AHAR® outsole rubber improves durability



GEL-CUMULUS® 25 GTX - WOMEN'S

Intro Date: 09/01/2023

M.S.R.P.: \$220.00



GEL-CUMULUS® 25 GTX
Style #: 1012B502-001
Color: BLACK/HOT PINK
EOL: 11/30/2023

GEL-CUMULUS® 25 GTX - MEN'S

z00121z

Women's Size: 5-12 | Men's Size: 6-13,14,15,16



GEL-CUMULUS® 25 GTX
Style #: 1011B683-001
Color: BLACK/NEON LIME
EOL: 11/30/2023

STACK HEIGHT: 37.5mm-29.5mm // DROP: 8mm // WEIGHT: 8.4oz/238g*

STACK HEIGHT: 38.5mm-30.5mm // DROP: 8mm // WEIGHT: 9.8oz/279g*

GEL-CUMULUS® 25

Experience a softer feel underfoot with the GEL-CUMULUS® 25 shoe. This neutral everyday trainer is a versatile choice for various running workouts and distances.

Part of our COLOUR INJECTION pack, this colourway draws inspiration from Van Gogh's paintings and his recognizable brush strokes.

We've updated the midsole with our new PureGEL™ technology and FF BLAST™ PLUS cushioning. These materials help create softer landings and a more energized toe-off during your training.

FEATURES

- FF BLAST™ PLUS cushioning provides lightweight impact absorption and a responsive rebound
- PureGEL™ technology helps provide lightweight cushioning and softer landings
- Engineered jacquard mesh upper helps improve breathability and comfort
- The sockliner is produced with the solution dyeing process that reduces water usage by approximately 33% and carbon emissions by approximately 45% compared to the conventional dyeing technology
- Reflective details are designed to improve visibility in low-light conditions
- At least 75% of the shoe's main upper material is made with recycled content to reduce waste and carbon emissions
- OrthoLite™ X-30 sockliner provides soft step-in comfort
- Full-ground contact design creates a smoother and more efficient ride
- AHAR® outsole rubber improves durability



GEL-CUMULUS® 25 - WOMEN'S

STACK HEIGHT: 26mm-18mm // DROP: 8mm // WEIGHT: 7.9oz/225g*

Intro Date: 06/01/2023

M.S.R.P.: \$180.00

z00990z

Size: 5-12



GEL-CUMULUS® 25
Style #: 1012B441-403
Style #: 1012B439-403 (D)
Color: DEEP OCEAN/LILAC HINT
EOL: 03/31/2024



GEL-CUMULUS® 25
Style #: 1012B441-003
Color: BLACK/GUNMETAL
EOL: 11/30/2023



GEL-CUMULUS® 25
Style #: 1012B441-002
Style #: 1012B440-002 (2A)
Style #: 1012B439-002 (D)
Color: BLACK/WHITE
EOL: 03/31/2024



GEL-CUMULUS® 25
Style #: 1012B441-001
Color: BLACK/PINK RAVE
EOL: 11/30/2023



GEL-CUMULUS® 25
Style #: 1012B441-600
Color: LIGHT GARNET/PALE APRICOT
EOL: 11/30/2023



GEL-CUMULUS® 25
Style #: 1012B441-020
Color: SHEET ROCK/PAPAYA
EOL: 03/31/2024



GEL-CUMULUS® 25
Style #: 1012B441-402
Color: SOOTHING SEA/GLOW YELLOW
EOL: 11/30/2023

GEL-CUMULUS® 25

Experience a softer feel underfoot with the GEL-CUMULUS® 25 shoe. This neutral everyday trainer is a versatile choice for various running workouts and distances.

Part of our COLOUR INJECTION pack, this colourway draws inspiration from Van Gogh's paintings and his recognizable brush strokes.

We've updated the midsole with our new PureGEL™ technology and FF BLAST™ PLUS cushioning. These materials help create softer landings and a more energized toe-off during your training.

FEATURES

- FF BLAST™ PLUS cushioning provides lightweight impact absorption and a responsive rebound
- PureGEL™ technology helps provide lightweight cushioning and softer landings
- Engineered jacquard mesh upper helps improve breathability and comfort
- The sockliner is produced with the solution dyeing process that reduces water usage by approximately 33% and carbon emissions by approximately 45% compared to the conventional dyeing technology
- Reflective details are designed to improve visibility in low-light conditions
- At least 75% of the shoe's main upper material is made with recycled content to reduce waste and carbon emissions
- OrthoLite™ X-30 sockliner provides soft step-in comfort
- Full-ground contact design creates a smoother and more efficient ride
- AHAR® outsole rubber improves durability



GEL-CUMULUS® 25 - MEN'S

STACK HEIGHT: 26mm-18mm // DROP: 8mm // WEIGHT: 9.0oz/255g*

Intro Date: 06/01/2023

M.S.R.P.: \$180.00

z00990z

Size: 6-13,14,15,16



GEL-CUMULUS® 25
Style #: 1011B621-407
Style #: 1011B620-407 (2E)
Color: FRENCH BLUE/BRIGHT ORANGE
EOL: 11/30/2023



GEL-CUMULUS® 25
Style #: 1011B621-003
Color: BLACK/GUNMETAL
EOL: 11/30/2023



GEL-CUMULUS® 25
Style #: 1011B621-002
Style #: 1011B620-002 (2E)
Style #: 1011B623-002 (4E)
Color: BLACK/CARRIER GREY
EOL: 03/31/2024



GEL-CUMULUS® 25
Style #: 1011B621-400
Color: MIDNIGHT/CILANTRO
EOL: 11/30/2023



GEL-CUMULUS® 25
Style #: 1011B621-401
Color: INDIGO BLUE/ISLAND BLUE
EOL: 11/30/2023



GEL-CUMULUS® 25
Style #: 1011B621-301
Color: PURE AQUA/WHITE
EOL: 11/30/2023



GEL-CUMULUS® 25
Style #: 1011B621-103
Color: WHITE/BLACK
EOL: 11/30/2023

GEL-CUMULUS® 25 LITE-SHOW

Experience a softer feel underfoot with the GEL-CUMULUS® 25 LITE-SHOW™ shoe. This neutral everyday trainer is a versatile choice for various running workouts and distances. It's also equipped with reflective accents that help improve your visibility when you're running in low-light conditions.

We've updated the midsole with our new PureGEL™ technology and FF BLAST™ PLUS cushioning. These materials help create softer landings and a more energized toe-off during your training.

FEATURES

- FF BLAST™ PLUS cushioning provides lightweight impact absorption and a responsive rebound
- PureGEL™ technology helps provide lightweight cushioning and softer landings
- The sockliner is produced with the solution dyeing process that reduces water usage by approximately 33% and carbon emissions by approximately 45% compared to the conventional dyeing technology
- Reflective details are designed to improve visibility in low-light conditions
- At least 75% of the shoe's main upper material is made with recycled content to reduce waste and carbon emissions
- OrthoLite™ X-30 sockliner provides soft step-in comfort
- Full-ground contact design creates a smoother and more efficient ride
- AHAR® outsole rubber improves durability



GEL-CUMULUS® 25 LITE-SHOW - WOMEN'S

Intro Date: **10/01/2023**

M.S.R.P.: **\$190.00**



GEL-CUMULUS® 25 LITE-SHOW
Style #: 1012B565-001
Color: BLACK/PURE SILVER
EOL: 12/31/2023

GEL-CUMULUS® 25 LITE-SHOW - MEN'S

z05401z

Women's Size: **5-12** | Men's Size: **6-13,14,15,16**



GEL-CUMULUS® 25 LITE-SHOW
Style #: 1011B752-001
Color: BLACK/PURE SILVER
EOL: 12/31/2023

STACK HEIGHT: **00mm-00mm** // DROP: **0mm** // WEIGHT: **0oz/0g***

STACK HEIGHT: **00mm-00mm** // DROP: **0mm** // WEIGHT: **0oz/0g***

LEGENDS - CUSHION WIDTH SUMMARY

WOMEN'S



D

GEL-NIMBUS® 25
Style #: 1012B437-004 (D)
Color: BLACK/GLOW YELLOW
EOL: 12/31/2023



CO D

GEL-NIMBUS® 25
Style #: 1012B437-001 (D)
Color: BLACK/PURE SILVER
EOL: 12/31/2023



D

GEL-CUMULUS® 25
Style #: 1012B439-403 (D)
Color: DEEP OCEAN/LILAC HINT
EOL: 03/31/2024



CO 2A D

GEL-CUMULUS® 25
Style #: 1012B440-002 (2A)
Style #: 1012B439-002 (D)
Color: BLACK/WHITE
EOL: 03/31/2024

MEN'S



CO 2E

GEL-NIMBUS® 25
Style #: 1011B625-403 (2E)
Color: DEEP OCEAN/BRIGHT ORANGE
EOL: 12/31/2023
EOL: 12/31/2023 (2E)



CO 2E 4E

GEL-NIMBUS® 25
Style #: 1011B625-001 (2E)
Style #: 1011B618-001 (4E)
Color: BLACK/PURE SILVER
EOL: 11/30/2023
EOL: 12/31/2023 (2E, 4E)



2E

GEL-CUMULUS® 25
Style #: 1011B620-407 (2E)
Color: FRENCH BLUE/BRIGHT ORANGE
EOL: 11/30/2023



CO 2E 4E

GEL-CUMULUS® 25
Style #: 1011B620-002 (2E)
Style #: 1011B623-002 (4E)
Color: BLACK/CARRIER GREY
EOL: 03/31/2024

BOUNCE



FOOTWEAR



NOVABLAST™ 3

The NOVABLAST™ 3 running shoe draws inspiration from a geometric origami feature for the upper and midsole. Part of our COLOUR INJECTION pack, this colourway draws inspiration from Van Gogh's paintings and his recognizable brush strokes.

A tongue wing construction in the upper helps improve the fit while reducing tongue movement. This component is reinforced with a more supportive heel design to help guide the foot with more control through your gait cycle.

Meanwhile, the midsole's FF BLAST™ PLUS cushioning helps create a lighter and more responsive feel underfoot.

FEATURES

Jacquard mesh upper provides good comfort and support while keeping feet cool

The heel stabilizer helps support the foot and create a more balanced stride

Gusseted tongue wing fit system improves the midfoot fit and reduces tongue sliding

FF BLAST™ PLUS cushioning provides lightweight impact absorption and a responsive rebound

Trampoline-inspired outsole design provides a more responsive bounce back

AHAR® outsole improves durability

At least 75% of the shoe's main upper material is made with recycled materials to reduce waste and carbon emissions

The sockliner is produced with the solution dyeing process that reduces water usage by approximately 33% and carbon emissions by approximately 45% compared to the conventional dyeing technology

Reflective details help improve visibility in low-light settings



NOVABLAST™ 3 - WOMEN'S

Intro Date: **06/01/2023**

M.S.R.P.: **\$190.00**



NOVABLAST™ 3

Style #: 1012B288-406
Color: FRENCH BLUE/HOT PINK
EOL: 11/30/2023



NOVABLAST™ 3

Style #: 1012B288-405
Color: OCEAN HAZE/FOGGY TEAL
EOL: 11/30/2023



NOVABLAST™ 3

Style #: 1012B288-021
Color: PIEDMONT GREY/BLUE VIOLET
EOL: 11/30/2023



NOVABLAST™ 3

Style #: 1012B288-104
Color: WHITE/BLACK
EOL: 11/30/2023

NOVABLAST™ 3 - MEN'S

z05401z

Women's Size: **5-12** | Men's Size: **7-14, 15, 16, 17**



NOVABLAST™ 3

Style #: 1011B458-005
Color: BLACK/DRIED LEAF GREEN
EOL: 11/30/2023



NOVABLAST™ 3

Style #: 1011B458-403
Color: FRENCH BLUE/STORM BLUE
EOL: 11/30/2023



NOVABLAST™ 3

Style #: 1011B458-104
Color: WHITE/BLACK
EOL: 11/30/2023

STACK HEIGHT: **30mm-22mm** // DROP: **8mm** // WEIGHT: **7.4oz/210g***

STACK HEIGHT: **31mm-23mm** // DROP: **8mm** // WEIGHT: **8.8oz/250g***

DYNABLAST™ 3

The DYNABLAST™ 3 shoe is designed for the fitness enthusiast seeking a comfortable offering for their run or training routine.

A soft, engineered knit improves the shoe's fit, comfort, and breathability. This material is also reinforced with a notched tongue construction that helps reduce pressure points over the in-step.

The FLYTEFOAM™ BLAST cushioning's energized softness provides a trampoline effect as you run. It helps create a smooth yet responsive feeling underfoot.

FEATURES

Engineered knit upper improves breathability
FLYTEFOAM™ BLAST technology provides lightweight cushioning and a responsive rebound
Underfoot cutouts provide excellent bounce
OrthoLite™ X-30 sockliner provides soft step-in comfort
AHARPLUS™ outsole rubber improves durability
At least 50% of the shoe's main upper material is made with recycled materials to reduce waste and carbon emissions
The sockliner is produced with the solution dyeing process that reduces water usage by approximately 33% and carbon emissions by approximately 45% compared to the conventional dyeing technology



DYNABLAST™ 3 - WOMEN'S

Intro Date: **06/01/2023**

M.S.R.P.: **\$150.00**



DYNABLAST™ 3

Style #: 1012B289-004
Color: BLACK/CEDAR GREEN
EOL: 11/30/2023



DYNABLAST™ 3

Style #: 1012B289-600
Color: LIGHT GARNET/PORT ROYAL
EOL: 11/30/2023



DYNABLAST™ 3

Style #: 1012B289-101
Color: WHITE/LIGHT GARNET
EOL: 11/30/2023

DYNABLAST™ 3 - MEN'S

z05280z

Women's Size: **5-12** | Men's Size: **6-13,14,15,16**



DYNABLAST™ 3

Style #: 1011B460-006
Color: BLACK/BRIGHT ORANGE
EOL: 11/30/2023



DYNABLAST™ 3

Style #: 1011B460-301
Color: RAIN FOREST/DRIED LEAF GREEN
EOL: 11/30/2023



DYNABLAST™ 3

Style #: 1011B460-405
Color: DEEP OCEAN/MOONROCK
EOL: 11/30/2023

STACK HEIGHT: **23mm-15mm** // DROP: **8mm** // WEIGHT: **7.4oz/210g***

STACK HEIGHT: **24mm-16mm** // DROP: **8mm** // WEIGHT: **8.8oz/250g***



VERSABLAST™ 3

**BLAST SERIES
DESIGN LINK**



**RESPONSIVE
CUSHIONING**



**RUSSEL
MESH UPPER**



**NOVABLAST™ TOOLING
INFLUENCES**

**ORTHOLITE™
SOCKLINER**

VERSABLAST™ 3

The VERSABLAST™ 3 shoe is a versatile training partner for varied workouts and running regimens.

Inspired by our BLAST series, we wanted to make this shoe softer and lighter. It's designed to provide good comfort for a range of activities.

By focusing on the shoe's energy return, we equipped the midsole foam with a responsive rebound for a fast feel underfoot.

FEATURES

Russel mesh upper helps provide good breathability

Heel pull tabs make this shoe easier to take on and off

Midsole foam provides soft cushioning with a responsive rebound

Half-bootie heel collar design



VERSABLAST™ 3 - WOMEN'S

Intro Date: **06/01/2023**

M.S.R.P.: **\$110.00**



VERSABLAST™ 3
Style #: 1012B511-001
Color: BLACK/AQUAMARINE
EOL: 11/30/2023



VERSABLAST™ 3
Style #: 1012B511-400
Color: DEEP OCEAN/HOT PINK
EOL: 11/30/2023



VERSABLAST™ 3
Style #: 1012B511-700
Color: PALE APRICOT/ LIGHT GARNET
EOL: 11/30/2023

VERSABLAST™ 3 - MEN'S

z05060z

Women's Size: **5-12** | Men's Size: **7-13,14,15,16**



VERSABLAST™ 3
Style #: 1011B692-003
Color: BLACK/CARRIER GREY
EOL: 11/30/2023



VERSABLAST™ 3
Style #: 1011B692-001
Color: BLACK/GLOW YELLOW
EOL: 11/30/2023



VERSABLAST™ 3
Style #: 1011B692-401
Color: FRENCH BLUE/WHITE
EOL: 11/30/2023

STACK HEIGHT: **31.5mm-21.5mm** // DROP: **10mm** // WEIGHT: **6.2oz/176g***

STACK HEIGHT: **32.5mm-22.5mm** // DROP: **10mm** // WEIGHT: **7.8oz/221g***

SPEED



FOOTWEAR





MAGIC SPEED™ 3



COMPETE



FF BLAST™ PLUS



CARBON PLATE



INTERNAL HEEL COUNTER

MAGIC SPEED™ 3

The MAGIC SPEED™ 3 shoe is designed to support your racing goals. In addition to the softer cushioning experience, this shoe helps create better stability throughout your stride.

A full-length Pebax propulsion plate is sandwiched in the midsole to propel your foot forward. This helps create a smoother and more propulsive experience during the toe-off phase of your stride.

Both layers of the midsole are reconstructed with FF BLAST™ PLUS cushioning. This makes the ride feel bouncier and more energetic during tempo runs and races.

FEATURES

Engineered mesh upper improves breathability

At least 50% of the shoe's main upper material is made with recycled materials to reduce waste and carbon emissions

The sockliner is produced with the solution dyeing process that reduces water usage by approximately 33% and carbon emissions by approximately 45% compared to the conventional dyeing technology

Full-length Pebax propulsion plate adds structure and improves toe-off propulsion

FF BLAST™ PLUS cushioning provides lightweight impact absorption and a responsive rebound

ASICSGRIP™ rubber outsole improves traction



MAGIC SPEED™ 3 - WOMEN'S

Intro Date: 07/01/2023 M.S.R.P.: \$210.00



MAGIC SPEED™ 3
Style #: 1012B518-100
Color: WHITE/BLACK
EOL: 11/30/2023



MAGIC SPEED™ 3
Style #: 1012B518-400
Color: DEEP OCEAN/GLOW YELLOW
EOL: 11/30/2023

MAGIC SPEED™ 3 - MEN'S

z05511z Women's Size: 5-12 | Men's Size: 6-13,14,15



MAGIC SPEED™ 3
Style #: 1011B703-100
Color: WHITE/BLACK
EOL: 11/30/2023



MAGIC SPEED™ 3
Style #: 1011B703-400
Color: ILLUSION BLUE/GLOW YELLOW
EOL: 11/30/2023

STACK HEIGHT: 35mm-28mm // DROP: 7mm // WEIGHT: 6.6oz/186g*

STACK HEIGHT: 36mm-29mm // DROP: 7mm // WEIGHT: 7.8oz/220g*



NOOSA TRI™ 15



NOOSA TRI™ 15

The NOOSA TRI™ 15 shoe features an Avant Garde approach that's inspired by Van Gogh paintings. As always, the shoe is designed to stand out from a visual and underfoot comfort perspective.

Bold colours and patterns on the engineered mesh upper are met with tongue pull-tabs and toggled laces that make the shoes easier to put on and take off. This makes it easier to transition between different stages of a triathlon.

We updated the midsole with a full-length FF BLAST™ cushioning unit to create lightweight impact absorption underfoot. Additionally, we added 1mm of foam for a more forgiving landing and a smoother ride.

FEATURES

FLYTEFOAM™ cushioning provides lightweight impact absorption and a responsive rebound

GUIDESOLE™ technology helps conserve energy by reducing ankle flexion

Engineered mesh upper improves breathability

AHARPLUS™ outsole improves durability

Sockliner is produced with a solution dyeing process that reduces water usage and carbon emissions

Full-ground contact design creates a smoother and more efficient ride

Toggled laces make it easier to personalize the shoe's fit

Heel pull tabs make the shoes easier to take on and off



NOOSA TRI™ 15 - WOMEN'S

Intro Date: 07/01/2023

M.S.R.P.: \$180.00

NOOSA TRI™ 15 - MEN'S

z00990z

Women's Size: 5-12 | Men's Size: 6-13,14,15



NOOSA TRI™ 15
Style #: 1012B429-400
Color: AQUARIUM/VIBRANT YELLOW
EOL: 11/30/2023



NOOSA TRI™ 15
Style #: 1012B429-401
Color: RESTFUL TEAL/HOT PINK
EOL: 11/30/2023



NOOSA TRI™ 15
Style #: 1012B429-800
Color: SUMMER DUNE/LIME GREEN
EOL: 11/30/2023



NOOSA TRI™ 15
Style #: 1011B609-400
Color: AQUARIUM/VIBRANT YELLOW
EOL: 11/30/2023



NOOSA TRI™ 15
Style #: 1011B609-401
Color: ILLUSION BLUE/AQUAMARINE
EOL: 11/30/2023

STACK HEIGHT: 34.5mm-29.5mm // DROP: 5mm // WEIGHT: 6.9oz/196g*

STACK HEIGHT: 35.5mm-30.5mm // DROP: 5mm // WEIGHT: 8.0oz/227g*



HYPER SPEED™ 3

ELASTIC LACE
HOLDER

ADDITIONAL
EYELETS

FLYTEFOAM
CUSHIONING

JACQUARD
MESH UPPER



HYPER SPEED™ 3

The HYPER SPEED™ 3 shoe is designed to complement your training and racing routine. This version includes a modified upper construction that's met with various customizable features.

The shoe's jacquard mesh material is designed to improve breathability so your feet can keep cool and comfortable during your run.

Holes in the eyestay decreased from 18 to 16, which helps provide a more balanced fit that's easier to customize. Meanwhile, an elastic lace component is positioned on top of the tongue to create better lace support.

FEATURES

Jacquard mesh upper for breathability

FLYTEFOAM™ cushioning provides lightweight impact absorption

AHAR® outsole improves durability

The sockliner is produced with the solution dyeing process that reduces water usage by approximately 33% and carbon emissions by approximately 45% compared to the conventional dyeing technology

At least 75% of the shoe's main upper material is made with recycled materials to reduce waste and carbon emissions



HYPER SPEED™ 3 - WOMEN'S

Intro Date: 06/01/2023

M.S.R.P.: \$130.00



HYPER SPEED™ 3
Style #: 1012B517-700
Color: DIVA PINK/WHITE
EOL: 11/30/2023

HYPER SPEED™ 3 - MEN'S

z05170z

Women's Size: 5-12 | Men's Size: 6-13,14,15



HYPER SPEED™ 3
Style #: 1011B701-100
Color: WHITE/BLACK
EOL: 11/30/2023

STACK HEIGHT: 31mm-24mm // DROP: 7mm // WEIGHT: 5.5oz/155g*

STACK HEIGHT: 32mm-25mm // DROP: 7mm // WEIGHT: 6.8oz/192g*

TRAIL



FOOTWEAR



TRABUCO™ MAX 2

The TRABUCO MAX™ 2 shoe draws inspiration from the concept of technology and how it can be synchronized with nature to free the mind and body. It continues to provide advanced energy savings and cushioning properties to help you navigate the trails with less effort.

FF BLAST™ PLUS technology has been added to the midsole to create effortless impact absorption while propelling your momentum forward. This material also creates a more dynamic feel that helps keep the shoe lightweight.

GUIDESOLE™ technology is strategically positioned to create an easy forward roll. Additionally, it's scientifically proven to help increase your potential to run further while using less energy.

FEATURES

Jacquard mesh upper helps improve breathability and comfort

At least 50% of the shoe's main upper material is made with recycled materials to reduce waste and carbon emissions

The sockliner is produced with the solution dyeing process that reduces water usage by approximately 33% and carbon emissions by approximately 45% compared to the conventional dyeing technology

GUIDESOLE™ technology helps conserve energy

FF BLAST™ PLUS cushioning creates a softer landing and a more responsive toe-off

ASICSGRIP™ outsole improves durability

OrthoLite™ sockliner provides soft step-in comfort

Reflective details are designed to improve visibility in low-light conditions

Breathable mesh upper

Gaiter system



TRABUCO™ MAX 2 - WOMEN'S

Intro Date: 06/01/2023

M.S.R.P.: \$210.00



TRABUCO™ MAX 2
Style #: 1012B426-002
Color: BLACK/HOT PINK
EOL: 11/30/2023

TRABUCO™ MAX 2 - MEN'S

z05511z

Women's Size: 5-12 | Men's Size: 6-13,14,15



TRABUCO™ MAX 2
Style #: 1011B606-401
Color: DEEP OCEAN/BRIGHT ORANGE
EOL: 11/30/2023

STACK HEIGHT: 28mm-23mm // DROP: 5mm // WEIGHT: 9.4oz/265g*

STACK HEIGHT: 29mm-24mm // DROP: 5mm // WEIGHT: 10.8oz/305g*

GEL-TRABUCO™ 11 GTX

The GEL-TRABUCO™ 11 GTX shoe is a versatile trail style that offers adaptive stability with less weight. It's designed with a GORE-TEX™ membrane that helps keep your feet warm and dry in wet conditions.

An adaptive guidance system and wide basenets help create a more stable ride on varying terrain. They're functional for when you need extra support during the later stages of your outdoor excursion.

Its updated rock protection plate features a flexible construction that shields your feet from sharp rocks and rugged terrain. We also added 2mm to the foam's stack height to improve comfort and impact absorption.

The outsole is formed with a revamped ASICSGRIP™ technology. This material helps you experience better traction on varying off-road surfaces.

FEATURES

GORE-TEX™ membrane helps prevent rain and snow from entering the shoe's interior
At least 50% of the shoe's main upper material is made with recycled materials to reduce waste and carbon emissions

The sockliner is produced with the solution dyeing process that reduces water usage by approximately 33% and carbon emissions by approximately 45% compared to the conventional dyeing technology

Adaptive guidance system helps create a more stable ride on varying terrain

Lace garage helps keep the laces from coming untied

Rearfoot GEL® technology improves impact absorption and creates a softer feeling at footstrike

FF BLAST™ cushioning creates a softer landing and a more responsive toe-off

Rock protection plate features a flexible design that helps shield your foot from rocks and rugged terrain

Reflective details are designed to improve visibility in low-light conditions

ASICSGRIP™ outsole rubber provides advanced grip on varying terrain



GEL-TRABUCO™ 11 GTX - WOMEN'S

Intro Date: 06/01/2023

M.S.R.P.: \$220.00



GEL-TRABUCO™ 11 GTX
Style #: 1012B425-003
Color: BLACK/HOT PINK
EOL: 11/30/2023



GEL-TRABUCO™ 11 GTX
Style #: 1012B425-002
Color: BLACK/CARRIER GREY
EOL: 11/30/2023

GEL-TRABUCO™ 11 GTX - MEN'S

z00121z

Women's Size: 5-12 | Men's Size: 6-13,14,15,16



GEL-TRABUCO™ 11 GTX
Style #: 1011B608-003
Color: BLACK/ANTIQUE RED
EOL: 11/30/2023



GEL-TRABUCO™ 11 GTX
Style #: 1011B608-002
Color: BLACK/CARRIER GREY
EOL: 11/30/2023

STACK HEIGHT: 21mm-13mm // DROP: 8mm // WEIGHT: 10.4oz/295g*

STACK HEIGHT: 22mm-14mm // DROP: 8mm // WEIGHT: 11.8oz/335g*

GEL-TRABUCO™ 11

The GEL-TRABUCO™ 11 shoe is a versatile trail style that offers adaptive stability with less weight. It's also reimagined with better traction for the trails.

An adaptive guidance system and wide basenets help create a more stable ride on varying terrain. They're functional for when you need extra support during the later stages of your outdoor excursion.

Its updated rock protection plate features a flexible construction that shields your feet from sharp rocks and rugged terrain. We also added 2mm to the foam's stack height to improve comfort and impact absorption.

The outsole is formed with a revamped ASICSGRIP™ technology. This material helps you experience better traction on varying off-road surfaces.

FEATURES

Engineered mesh upper helps improve breathability

At least 50% of the shoe's main upper material is made with recycled materials to reduce waste and carbon emissions

The sockliner is produced with the solution dyeing process that reduces water usage by approximately 33% and carbon emissions by approximately 45% compared to the conventional dyeing technology

Adaptive guidance system helps create a more stable ride on varying terrain

Lace garage helps keep the laces from coming untied

Rearfoot GEL® technology improves impact absorption and creates a softer feeling at footstrike

FF BLAST™ cushioning creates a softer landing and a more responsive toe-off

Rock protection plate features a flexible design that helps shield your foot from rocks and rugged terrain

Reflective details are designed to improve visibility in low-light conditions

ASICSGRIP™ outsole rubber provides advanced grip on varying terrain

Full-ground contact design creates a smoother and more efficient ride



GEL-TRABUCO™ 11 - WOMEN'S

Intro Date: 06/01/2023

M.S.R.P.: \$190.00



GEL-TRABUCO™ 11
Style #: 1012B424-002
Color: BLACK/GRIS BLUE
EOL: 11/30/2023

GEL-TRABUCO™ 11 - MEN'S

z05401z

Women's Size: 5-12 | Men's Size: 6-13,14,15



GEL-TRABUCO™ 11
Style #: 1011B605-002
Color: BLACK/GRIS BLUE
EOL: 11/30/2023

STACK HEIGHT: 21mm-13mm // DROP: 8mm // WEIGHT: 9.4oz/265g*

STACK HEIGHT: 22mm-14mm // DROP: 8mm // WEIGHT: 9.4oz/265g*



FUJISPEED™ 2



FF BLAST™ PLUS



CARBON PLATE



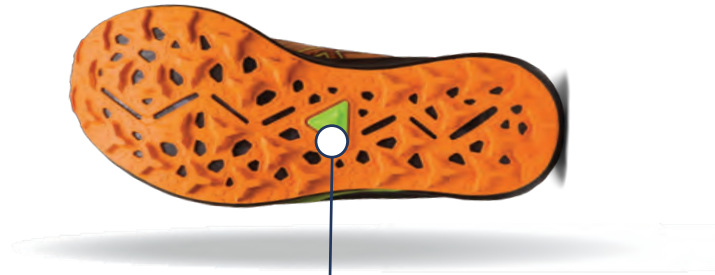
ASICSGRIP

GUSSETED TONGUE



NEW / FULL-LENGTH
CARBON
PLATE

NEW / FF BLAST™ PLUS



ASICSGRIP™

FUJISPEED™ 2

The FUJISPEED™ 2 shoe is engineered to give you the confidence you need to go fast on the trails.

This shoe is revamped with an improved fit that allows your toes to splay more naturally. Meanwhile, its lightweight woven upper provides advanced comfort and durability.

The midsole is reimagined with a full-length FF BLAST™ PLUS cushioning system to help create a lightweight and energetic ride with cloud-like comfort. This shoe also includes a full-length carbon plate designed to propel your momentum forward while providing better stability on uneven terrain.

Lastly, the ASICSGRIP™ outsole rubber helps to improve traction on challenging trail terrain.

FEATURES

Nexkin upper reduces the shoe's weight while increasing durability against abrasions from rocks and roots

An asymmetrical lacing system reduces pressure across the top of the foot

The lace garage helps keep the laces from coming untied

GUIDESOLE™ technology helps you conserve energy by reducing ankle flexion

FLYTEFOAM™ cushioning provides impact absorption

Pebax propulsion plate helps redirect your energy forward while creating a faster feel underfoot

ASICSGRIP™ outsole rubber provides advanced grip on varying terrain



FUJISPEED™ 2 - WOMEN'S

Intro Date: 06/01/2023

M.S.R.P.: \$210.00



FUJISPEED™ 2
Style #: 1012B515-400
Color: GRIS BLUE/BLACK
EOL: 11/30/2023

FUJISPEED™ 2 - MEN'S

z05511z

Women's Size: 5-12 | Men's Size: 7-13,14,15



FUJISPEED™ 2
Style #: 1011B699-800
Color: BRIGHT ORANGE/ANTIQUE RED
EOL: 11/30/2023

STACK HEIGHT: 35mm-30mm // DROP: 5mm // WEIGHT: 7.5oz/212g*

STACK HEIGHT: 36mm-31mm // DROP: 5mm // WEIGHT: 8.6oz/243g*



FUJILITE™ 4



FF BLAST™

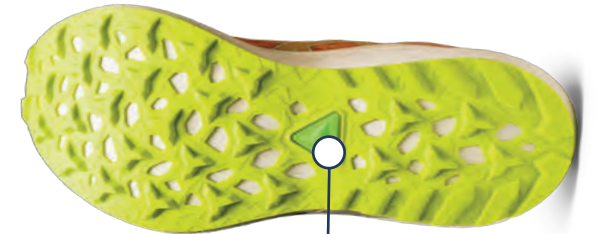


ASICSGRIP

NEW / TONGUE
WING CONSTRUCTION



FF BLAST™



ASICSGRIP™

LACE GARAGE



FUJI LITE™ 4

The FUJI LITE™ 4 shoe provides advanced grip to give you the confidence to go fast on the trails.

FLYTEFOAM™ cushioning is positioned in the midsole to help provide lightweight impact absorption to keep your feet comfortable on varying terrain.

Its modified outsole design is reimagined with lighter construction and better grip. These updates help you experience better traction on uneven terrain with wet conditions.

Lastly, the upper material is constructed with fewer resources and recycled components to support more sustainable manufacturing.

FEATURES

Engineered mesh upper improves breathability

At least 50% of the shoe's main upper material is made with recycled materials to reduce waste and carbon emissions

The sockliner is produced with the solution dyeing process that reduces water usage by approximately 33% and carbon emissions by approximately 45% compared to the conventional dyeing technology

Reflective details help improve visibility

The lace garage tongue feature allows the wearer to tuck in their laces, so they don't come untied or snag anything when they're running

FLYTEFOAM™ cushioning consists of cellulose nanofiber, a bio-based material applied as a component of this shoe's midsole

ASICSGRIP™ outsole helps runners experience better traction and durability on wet and dry trail surfaces



FUJI LITE™ 4 - WOMEN'S

Intro Date: **06/01/2023**

M.S.R.P.: **\$170.00**



FUJI LITE™ 4
Style #: 1012B514-200
Color: BIRCH/HOT PINK
EOL: 11/30/2023

FUJI LITE™ 4 - MEN'S

z05390z

Women's Size: **5-12** | Men's Size: **6-13,14,15,16**



FUJI LITE™ 4
Style #: 1011B698-800
Color: BRIGHT ORANGE/NEON LIME
EOL: 11/30/2023

STACK HEIGHT: **31.5mm-27.5mm** // DROP: **4mm** // WEIGHT: **8.2oz/233g***

STACK HEIGHT: **32.5mm-28.5mm** // DROP: **4mm** // WEIGHT: **9.4oz/266g***

GEL-SONOMA™ 7 GTX

The GEL-SONOMA™ 7 GTX shoe is designed for the great outdoors. It's formed with a GORE-TEX™ membrane that helps keep your feet warm and dry when you're running in great conditions.

Underfoot comfort stems from a full-length AMPLIFOAM™ midsole and GEL® technology unit that's strategically placed where cushioning is needed.

Lastly, the trail-specific outsole is functional for providing advanced traction. Its pattern helps you experience a confident stride on the uphill and downhill sections of challenging terrain.

FEATURES

GORE-TEX™ membrane helps prevent rain and snow from entering the shoe's interior
At least 20% of the shoe's main upper material is made with recycled content to reduce waste and carbon emissions

The sockliner is produced with the solution dyeing process that reduces water usage by approximately 33% and carbon emissions by approximately 45% compared to the conventional dyeing technology

AMPLIFOAM™ cushioning helps create a soft feeling underfoot

Rearfoot GEL® technology improves impact absorption and creates a softer feeling at footstrike

Solid rubber outsole



GEL-SONOMA™ 7 GTX - WOMEN'S

Intro Date: 06/01/2023

M.S.R.P.: \$150.00



GEL-SONOMA™ 7 GTX
Style #: 1012B414-020
Color: GRAPHITE GREY/DEEP OCEAN
EOL: 11/30/2023

GEL-SONOMA™ 7 GTX - MEN'S

z05280z

Women's Size: 5-12 | Men's Size: 6-13,14,15



GEL-SONOMA™ 7 GTX
Style #: 1011B593-020
Color: GRAPHITE GREY/ NEON LIME
EOL: 11/30/2023

STACK HEIGHT: 20mm-12mm // DROP: 8mm // WEIGHT: 10.6oz/300g*

STACK HEIGHT: 20mm-12mm // DROP: 8mm // WEIGHT: 11.6oz/330g*

GEL-SONOMA™ 7

The GEL-SONOMA™ 7 shoe is designed for the great outdoors. It's a durable trail model that's made to provide good grip on off-road surfaces.

Underfoot comfort stems from a full-length AMPLIFOAM™ midsole and GEL® technology unit that's strategically placed where cushioning is needed.

Lastly, the trail-specific outsole is functional for providing advanced traction. Its pattern helps you experience a confident stride on the uphill and downhill sections of challenging terrain.

FEATURES

Engineered mesh upper helps improve breathability

At least 20% of the shoe's main upper material is made with recycled materials to reduce waste and carbon emissions

The sockliner is produced with the solution dyeing process that reduces water usage by approximately 33% and carbon emissions by approximately 45% compared to the conventional dyeing technology

AMPLIFOAM™ cushioning helps create a soft and flexible feeling underfoot

Rearfoot GEL® technology improves impact absorption and creates a softer feeling at footstrike

Solid rubber outsole



GEL-SONOMA™ 7 - WOMEN'S

Intro Date: 06/01/2023

M.S.R.P.: \$120.00



GEL-SONOMA™ 7
Style #: 1012B413-002
Color: BLACK/DEEP OCEAN
EOL: 11/30/2023

GEL-SONOMA™ 7 - MEN'S

z00660z

Women's Size: 5-12 | Men's Size: 6-13,14,15



GEL-SONOMA™ 7
Style #: 1011B595-002
Color: BLACK/BRIGHT ORANGE
EOL: 11/30/2023

STACK HEIGHT: 20mm-12mm // DROP: 8mm // WEIGHT: 9.4oz/265g*

STACK HEIGHT: 20mm-12mm // DROP: 8mm // WEIGHT: 11.6oz/330g*

GEL-VENTURE™ 9 WATERPROOF

The GEL-VENTURE™ 9 WATERPROOF shoe is designed for wet weather excursions. Its waterproof upper helps block out water

The midsole has been modified with AMPLIFOAM™ cushioning and a higher stack height. When combined with the rearfoot GEL® technology, these features help create a softer and more comfortable feel underfoot.

Meanwhile, the outsole features an advanced traction pattern that's functional for the road and trail surfaces.

FEATURES

Mesh upper improves breathability

Water-resistant upper helps keep your feet dry

The sockliner is produced with the solution dyeing process that reduces water usage by approximately 33% and carbon emissions by approximately 45% compared to the conventional dyeing technology

Rearfoot GEL® technology improves impact absorption and creates a softer feeling at footstrike

AMPLIFOAM™ cushioning improves cushioning and creates a more flexible feel at footstrike

Trail-specific outsole pattern improves grip on various surfaces



GEL-VENTURE™ 9 WATERPROOF - WOMEN'S

Intro Date: 06/01/2023

M.S.R.P.: \$130.00



GEL-VENTURE™ 9 WATERPROOF
Style #: 1012B519-002
Color: BLACK/LIME GREEN
EOL: 11/30/2023

GEL-VENTURE™ 9 WATERPROOF - MEN'S

z05170z

Women's Size: 5-12 | Men's Size: 7-13,14,15



GEL-VENTURE™ 9 WATERPROOF
Style #: 1011B705-020
Color: GRAPHITE GREY/NEON LIME
EOL: 11/30/2023

STACK HEIGHT: 21mm-11mm // DROP: 10mm // WEIGHT: 9.2oz/260g*

STACK HEIGHT: 22mm-12mm // DROP: 10mm // WEIGHT: 10.9oz/310g*

GEL-VENTURE™ 9

The GEL-VENTURE™ 9 shoe has been modified to provide better cushioning. Its functionality has been strategically designed for when you're shifting from the outdoors to city streets.

The midsole has been modified with AMPLIFOAM™ cushioning and a higher stack height. When combined with the rearfoot GEL® technology, these features help create a softer and more comfortable feel underfoot.

Meanwhile, the outsole features an advanced traction pattern that's functional for the road and trail surfaces.

FEATURES

Mesh upper improves breathability

The sockliner is produced with the solution dyeing process that reduces water usage by approximately 33% and carbon emissions by approximately 45% compared to the conventional dyeing technology

Rearfoot GEL® technology improves impact absorption and creates a softer feeling at footstrike

AMPLIFOAM™ cushioning improves cushioning

Trail-specific outsole pattern improves grip on various surfaces



GEL-VENTURE™ 9 - WOMEN'S

Intro Date: 06/01/2023

M.S.R.P.: \$110.00

GEL-VENTURE™ 9 - MEN'S

z05060z

Women's Size: 5-12 | Men's Size: 7-13,14,15



GEL-VENTURE™ 9
Style #: 1012B313-023
Color: METROPOLIS/GRIS BLUE
EOL: 05/31/2024



CO D

GEL-VENTURE™ 9
Style #: 1012B313-003
Style #: 1012B314-003 (D)
Color: BLACK/DIGITAL VIOLET
EOL: 11/30/2024



CO

GEL-VENTURE™ 9
Style #: 1012B313-004
Color: BLACK/SUMMER DUNE
EOL: 11/30/2024



GEL-VENTURE™ 9
Style #: 1012B313-403
Color: GRIS BLUE/DEEP OCEAN
EOL: 11/30/2024



GEL-VENTURE™ 9
Style #: 1011B486-022
Color: GRAPHITE GREY/BLACK
EOL: 05/31/2024



CO 4E

GEL-VENTURE™ 9
Style #: 1011B486-001
Style #: 1011B488-001 (4E)
Color: BLACK/BLACK
EOL: 11/30/2024



CO

GEL-VENTURE™ 9
Style #: 1011B486-402
Color: MIDNIGHT/SKY
EOL: 11/30/2024



CO

GEL-VENTURE™ 9
Style #: 1011B486-020
Color: SHEET ROCK/SUN PEACH
EOL: 11/30/2024

STACK HEIGHT: 21mm-11mm // DROP: 10mm // WEIGHT: 8.8oz/250g*

STACK HEIGHT: 22mm-12mm // DROP: 10mm // WEIGHT: 10.6oz/300g*

TRAIL WIDTH SUMMARY

WOMEN'S



GEL-VENTURE™ 9
Style #: 1012B314-003 (D)
Color: BLACK/DIGITAL VIOLET
EOL: 11/30/2024

MEN'S



GEL-VENTURE™ 9
Style #: 1011B488-001 (4E)
Color: BLACK/BLACK
EOL: 11/30/2024

CORE RUNNING



FOOTWEAR



GEL-EXCITE™ 10

The GEL-EXCITE™ 10 shoe features a significantly lighter design than the previous version. It's designed to help create more underfoot comfort for your run and fitness routine.

Layered with AMPLIFOAM™ PLUS technology in the midsole, this shoe also includes a higher stack height to help provide a more comfortable cushioning experience.

FEATURES

- Durable and breathable no-sew mesh upper
- AMPLIFOAM™ PLUS cushioning improves durability and creates a more flexible feel at footstrike
- Rearfoot GEL® technology improves impact absorption and creates a softer feeling at footstrike
- OrthoLite™ sockliner provides soft step-in comfort
- GUIDANCE LINE™ technology provides a more consistent stride
- The trail-specific outsole helps provide a better grip on off-road surfaces



GEL-EXCITE™ 10 - WOMEN'S

STACK HEIGHT: 34mm-26mm // DROP: 8mm // WEIGHT: 7.8oz/220g*

Intro Date: 06/01/2023

M.S.R.P.: \$120.00

z00660z

Size: 5-12



GEL-EXCITE™ 10
Style #: 1012B418-400
Color: AQUARIUM/VIBRANT YELLOW
EOL: 11/30/2023



GEL-EXCITE™ 10
Style #: 1012B418-003
Style #: 1012B420-003 (D)
Color: BLACK/WHITE
EOL: 05/31/2024



GEL-EXCITE™ 10
Style #: 1012B418-001
Color: BLACK/AQUAMARINE
EOL: 11/30/2023



GEL-EXCITE™ 10
Style #: 1012B418-401
Color: FRENCH BLUE/LIGHT GARNET
EOL: 11/30/2023



GEL-EXCITE™ 10
Style #: 1012B418-600
Color: LIGHT GARNET/ROSE DUST
EOL: 11/30/2023



GEL-EXCITE™ 10
Style #: 1012B418-020
Color: PIEDMONT GREY/HOT PINK
EOL: 11/30/2023

GEL-EXCITE™ 10

The GEL-EXCITE™ 10 shoe features a significantly lighter design than the previous version. It's designed to help create more underfoot comfort for your run and fitness routine.

Layered with AMPLIFOAM™ PLUS technology in the midsole, this shoe also includes a higher stack height to help provide a more comfortable cushioning experience.

FEATURES

Durable and breathable no-sew mesh upper
AMPLIFOAM™ PLUS cushioning improves durability and creates a more flexible feel at footstrike
Rearfoot GEL® technology improves impact absorption and creates a softer feeling at footstrike
OrthoLite™ sockliner provides soft step-in comfort
GUIDANCE LINE™ technology provides a more consistent stride
The trail-specific outsole helps provide a better grip on off-road surfaces



GEL-EXCITE™ 10 - MEN'S

STACK HEIGHT: 35mm-27mm // DROP: 8mm // WEIGHT: 9.2oz/260g*

Intro Date: 06/01/2023

M.S.R.P.: \$120.00

z00660z

Size: 6-13,14,15



GEL-EXCITE™ 10
Style #: 1011B600-400
Color: AQUARIUM/VIBRANT YELLOW
EOL: 11/30/2023



GEL-EXCITE™ 10
Style #: 1011B600-003
Style #: 1011B599-003 (4E)
Color: BLACK/WHITE
Size: 7-13,14,15 (4E)
EOL: 05/31/2024



GEL-EXCITE™ 10
Style #: 1011B600-004
Color: BLACK/ILLUSION BLUE
EOL: 11/30/2023



GEL-EXCITE™ 10
Style #: 1011B600-401
Style #: 1011B599-401 (4E)
Color: DEEP OCEAN/BRIGHT ORANGE
Size: 7-13,14,15 (4E)
EOL: 05/31/2024



GEL-EXCITE™ 10
Style #: 1011B600-020
Color: SHEET ROCK/GREEN GECKO
EOL: 11/30/2023

GEL-CONTEND™ 8

The GEL-CONTEND™ 8 running shoe provides good cushioning, support, and durability.

A jacquard mesh upper stretches with the foot's natural motion and creates a comfortable fit. Meanwhile, the synthetic stitching on the overlays helps create a more supportive foothold.

The midsole features GEL® technology and AMPLIFOAM™ cushioning. These technologies help increase durability while creating a softer feel underfoot.

FEATURES

Rearfoot GEL® technology cushioning improves impact absorption and creates a softer feeling at footstrike

Jacquard mesh upper improves airflow

OrthoLite™ sockliner offers excellent step-in comfort

Flex grooves in the outsole improve flexibility

Synthetic stitching on the overlays improves support

AMPLIFOAM™ cushioning helps improve durability

GUIDANCE LINE™ technology provides a more consistent stride

At least 20% of the shoe's main upper material is made with recycled materials to reduce waste and carbon emissions

The sockliner is produced with the solution dyeing process that reduces water usage by approximately 33% and carbon emissions by approximately 45% compared to the conventional dyeing technology



GEL-CONTEND™ 8 - WOMEN'S

Intro Date: 06/01/2023

M.S.R.P.: \$100.00



GEL-CONTEND™ 8
Style #: 1012B320-411
Color: FRENCH BLUE/ROSE DUST
EOL: 05/31/2024



CO

GEL-CONTEND™ 8
Style #: 1012B320-001
Color: BLACK/CARRIER GREY
EOL: 05/31/2024



CO D

GEL-CONTEND™ 8
Style #: 1012B320-008
Style #: 1012B319-008 (D)
Color: BLACK/PINK RAVE
EOL: 05/31/2024



CO

GEL-CONTEND™ 8
Style #: 1012B320-025
Color: SHEET ROCK/DIGITAL VIOLET
EOL: 05/31/2024

GEL-CONTEND™ 8 - MEN'S

z00550z

Women's Size: 5-12 | Men's Size: 6-13,14,15



GEL-CONTEND™ 8
Style #: 1011B492-408
Color: DEEP OCEAN/BLACK
EOL: 05/31/2024



CO

GEL-CONTEND™ 8
Style #: 1011B492-001
Color: BLACK/CARRIER GREY
EOL: 05/31/2024



CO 4E

GEL-CONTEND™ 8
Style #: 1011B492-002
Style #: 1011B493-002 (4E)
Color: BLACK/WHITE
EOL: 05/31/2024



CO

GEL-CONTEND™ 8
Style #: 1011B492-024
Color: CARRIER GREY/METROPOLIS
EOL: 05/31/2024

STACK HEIGHT: 21mm-11mm // DROP: 10mm // WEIGHT: 7.8oz/220g*

STACK HEIGHT: 22mm-12mm // DROP: 10mm // WEIGHT: 10.4oz/296g*

JOLT™ 4

The new JOLT™ 4 shoe is designed to help you run or walk more comfortably. This shoe combines an AMPLIFOAM™ midsole with a solid rubber outsole for improved durability. Drawing inspiration from our longstanding GT series, this trainer offers classic styling and a great fit.

To make this edition even softer and move with your foot better on the run, we have engineered more flex grooves in the outsole. The upper is reinforced with stitch down overlays. Lastly, a more accommodating forefoot fit and a soft ORTHOLITE™ sockliner will help keep you stay comfortable throughout the day.

FEATURES

Engineered mesh upper helps improve breathability

Synthetic stitching on the overlays

AMPLIFOAM™ cushioning helps provide underfoot comfort

The sockliner is produced with the solution dyeing process that reduces water usage by approximately 33% and carbon emissions by approximately 45% compared to the conventional dyeing technology



JOLT™ 4 - WOMEN'S

Intro Date: **06/01/2023**

M.S.R.P.: **\$90.00**



JOLT™ 4
Style #: 1012B421-021
Style #: 1012B422-021 (D)
Color: METROPOLIS/ROSE DUST
EOL: 11/30/2023



JOLT™ 4
Style #: 1012B421-001
Color: BLACK/BLACK
EOL: 11/30/2023



JOLT™ 4
Style #: 1012B421-002
Style #: 1012B422-002 (D)
Color: BLACK/WHITE
EOL: 11/30/2023



JOLT™ 4
Style #: 1012B421-502
Color: NIGHT SHADE/DEEP MAUVE
EOL: 11/30/2023

JOLT™ 4 - MEN'S

z05940z

Women's Size: **4H-12** | Men's Size: **3-13,14,15**



JOLT™ 4
Style #: 1011B603-021
Color: CARRIER GREY/BRIGHT ORANGE
EOL: 11/30/2023



JOLT™ 4
Style #: 1011B603-001
Style #: 1011B602-001 (4E)
Color: BLACK/BLACK
EOL: 11/30/2023



JOLT™ 4
Style #: 1011B603-002
Style #: 1011B602-002 (4E)
Color: BLACK/WHITE
EOL: 11/30/2023



JOLT™ 4
Style #: 1011B603-404
Color: DEEP OCEAN/ILLUSION BLUE
EOL: 11/30/2023

STACK HEIGHT: **21mm-11mm** // DROP: **10mm** // WEIGHT: **8.0oz/228g***

STACK HEIGHT: **22mm-12mm** // DROP: **10mm** // WEIGHT: **9.5oz/268g***

CORE RUNNING WIDTH SUMMARY - WOMEN'S

WOMEN'S



GEL-EXCITE™ 10
Style #: 1012B420-003 (D)
Color: BLACK/WHITE
EOL: 05/31/2024



GEL-CONTEND™ 8
Style #: 1012B319-008 (D)
Color: BLACK/PINK RAVE
EOL: 05/31/2024



JOLT™ 4
Style #: 1012B422-021 (D)
Color: METROPOLIS/ROSE DUST
EOL: 11/30/2023



JOLT™ 4
Style #: 1012B422-002 (D)
Color: BLACK/WHITE
EOL: 11/30/2023

CORE RUNNING WIDTH SUMMARY - MEN'S

MEN'S



GEL-EXCITE™ 10
Style #: 1011B599-003 (4E)
Color: BLACK/WHITE
Size: 7-13,14,15 (4E)
EOL: 05/31/2024



GEL-EXCITE™ 10
Style #: 1011B599-401 (4E)
Color: DEEP OCEAN/BRIGHT ORANGE
Size: 7-13,14,15 (4E)
EOL: 05/31/2024



GEL-CONTENT™ 8
Style #: 1011B493-002 (4E)
Color: BLACK/WHITE
EOL: 05/31/2024



JOLT™ 4
Style #: 1011B602-002 (4E)
Color: BLACK/WHITE
EOL: 11/30/2023



JOLT™ 4
Style #: 1011B602-001 (4E)
Color: BLACK/BLACK
EOL: 11/30/2023

PACKS



FOOTWEAR



NAGINO PACK

WOMEN'S



GEL-KAYANO® 30

Style #: 1012B357-700

Color: ROSE DUST/LIGHT GARNET

EOL: 11/30/2023



GT-2000® 12

Style #: 1012B506-600

Color: LIGHT GARNET/BRISKET RED

EOL: 11/30/2023



GT-1000® 12

Style #: 1012B450-700

Color: PALE APRICOT/LIGHT GARNET

EOL: 11/30/2023



GEL-NIMBUS® 25

Style #: 1012B356-702

Color: PALE APRICOT/LIGHT GARNET

EOL: 12/31/2023



GEL-CUMULUS® 25

Style #: 1012B441-600

Color: LIGHT GARNET/PALE APRICOT

EOL: 11/30/2023



NOVABLAST™ 3

Style #: 1012B288-405

Color: OCEAN HAZE/FOGGY TEAL

EOL: 11/30/2023



DYNABLAST™ 3

Style #: 1012B289-600

Color: LIGHT GARNET/PORT ROYAL

EOL: 11/30/2023

LITE-SHOW PACK

WOMEN'S



GEL-KAYANO® 30 LITE-SHOW
Style #: 1012B576-001
Color: BLACK/PURE SILVER
EOL: 12/31/2023



GT-2000® 12 LITE-SHOW
Style #: 1012B578-001
Color: BLACK/PURE SILVER
EOL: 12/31/2023



GT-1000® 12 LITE-SHOW
Style #: 1012B573-001
Color: BLACK/PURE SILVER
EOL: 11/30/2023



GEL-CUMULUS® 25 LITE-SHOW
Style #: 1012B565-001
Color: BLACK/PURE SILVER
EOL: 12/31/2023

MEN'S



GEL-KAYANO® 30 LITE-SHOW
Style #: 1011B765-001
Color: BLACK/PURE SILVER
EOL: 12/31/2023



GT-2000® 12 LITE-SHOW
Style #: 1011B766-001
Color: BLACK/PURE SILVER
EOL: 12/31/2023



GT-1000® 12 LITE-SHOW
Style #: 1011B762-001
Color: BLACK/PURE SILVER
EOL: 11/30/2023



GEL-CUMULUS® 25 LITE-SHOW
Style #: 1011B752-001
Color: BLACK/PURE SILVER
EOL: 12/31/2023

KIDS



FOOTWEAR



NOVABLAST™ 2 GS

The NOVABLAST™ 2 GS (Grade School) shoe is the kid's version of the iconic NOVABLAST™ series. It features an energetic bounce underfoot that's inspired by the feeling of jumping on a trampoline. Created using a kid's-specific last, these shoes offer a more accommodating fit for growing feet. With a solid rubber outsole and medial wrap-up, these shoes improve durability. Meanwhile, motivational details, like the phrase "Better your Best," appears on the outsole.

FEATURES

Breathable mesh upper

The solid rubber outsole and medial wrap-up improve the shoe's durability



NOVABLAST™ 2 GS - KIDS

STACK HEIGHT: 20mm-12mm // DROP: 8mm // WEIGHT: 7.2oz/204g*

Intro Date: 06/01/2023

M.S.R.P.: \$110.00

z00550z

Size: 1-7



NOVABLAST™ 2 GS
Style #: 1014A235-403
Color: DIVE BLUE/AQUARIUM
EOL: 11/30/2023



NOVABLAST™ 2 GS
Style #: 1014A235-006
Color: BLACK/GLOW YELLOW
EOL: 11/30/2023

GT-1000® 12 GS

The GT-1000® 11 GS (Grade School) shoe is designed to keep energized feet in motion. A LITETRUSST™ support system is placed in the midsole to increase stability as kids roll through their stride.

Meanwhile, E.V.A cushioning and GEL® technology create good shock absorption with a softer feel underfoot. Designed with a kid's-specific last, these shoes offer a more accommodating fit for growing feet.

Lastly, this style includes a solid rubber outsole, a medial wrap-up, and toe rubber stitching to improve durability.

FEATURES

Breathable mesh upper

GEL® technology improves impact absorption and creates a softer feeling at footstrike

E.V.A cushioning

Kid's specific last creates a more accommodating fit

The solid rubber outsole and medial wrap-up improve the shoe's durability



GT-1000® 12 GS - KIDS

STACK HEIGHT: 20mm-12mm // DROP: 8mm // WEIGHT: 7.7oz/218g*

Intro Date: 06/01/2023

M.S.R.P.: \$100.00

z00050z

Size: 1-7



GT-1000® 12 GS
Style #: 1014A296-003
Color: BLACK/RAIN FOREST
EOL: 11/30/2023



GT-1000® 12 GS
Style #: 1014A296-002
Color: BLACK/CYBER GRAPE
EOL: 11/30/2023



GT-1000® 12 GS
Style #: 1014A296-402
Color: ILLUSION BLUE/BLACK
EOL: 11/30/2023



GT-1000® 12 GS
Style #: 1014A296-020
Color: TARMAC/PURE AQUA
EOL: 11/30/2023

GEL-NOOSA TRI™ 15 GS | PS

Drawing design cues from our flagship triathlon shoe, the GEL-NOOSA TRI™ 15 GS (Grade School) style channels the same energetic colour blocking, along with a technical design.

Featuring a mesh upper to increase airflow that helps keep feet cool, this shoe's vibrant colourway is combined with a series of bold "NOOSA" graphics.

Injected with improved comfort in the midsole, thanks to the injection E.V.A midsole and increased flexibility in the forefoot, this shoe also incorporates a toe stitched rubber outsole compound for improved durability.

Drawing design cues from our flagship triathlon shoe, the PRE NOOSA TRI™ 15 PS (Pre-School) style channels the same energetic colour blocking, backed by a technical design, and componentry.

Featuring a mesh upper to increase airflow that helps keep feet cool, this shoe's vibrant colourway is combined with a series of bold "NOOSA" graphics.

Injected with improved comfort thanks to the injection E.V.A midsole foam and increased flexibility in the forefoot, this shoe also incorporates a toe stitching and rubber outsole compound for improved durability.

FEATURES

- Breathable mesh upper
- GEL® technology improves impact absorption and creates a softer feeling at footstrike
- Injection E.V.A midsole cushioning
- Stitched toe and solid rubber outsole improve durability

- Mesh upper
- Injection E.V.A cushioning



GEL-NOOSA TRI™ 15 GS - KIDS

Intro Date: **06/01/2023**

M.S.R.P. GS: **\$95.00** | PS: **\$85.00**



GEL-NOOSA TRI™ 15 GS

Style #: 1014A311-700
Color: HOT PINK/LILAC HINT
EOL: 11/30/2023



GEL-NOOSA TRI™ 15 GS

Style #: 1014A311-401
Color: ILLUSION BLUE/AQUAMARINE
EOL: 11/30/2023

PRE NOOSA TRI™ 15 PS - KIDS

GS: **z05740z** | PS: **z05240z**

GS Size: **1-7** | PS: **K10,K11,K12,K13,1-3**



PRE NOOSA TRI™ 15 PS

Style #: 1014A314-401
Color: ILLUSION BLUE/AQUAMARINE
EOL: 11/30/2023



PRE NOOSA TRI™ 15 PS

Style #: 1014A314-700
Color: HOT PINK/LILAC HINT
EOL: 11/30/2023

STACK HEIGHT: **19.5mm-11mm** // DROP: **8.5mm** // WEIGHT: **6.8oz/194g***

STACK HEIGHT: **16.5mm-10mm** // DROP: **6.5mm** // WEIGHT: **5.0oz/143g***

GEL-EXCITE™ 10

The GEL-EXCITE™ 10 GS (Grade School) shoe is formed with energized design details.

This shoe offers high-quality breathability with fewer layers on the upper to reduce irritation in the forefoot. Durable properties, like the toe rubber stitching and solid rubber outsole are designed to expand the shoe's lifespan.

The PRE-EXCITE™ 10 PS (Pre-School) shoe is formed with energized design details. This shoe offers high-quality breathability with fewer layers on the upper to reduce irritation in the forefoot.

Meanwhile, the ASICS Stripes on the sides are rendered with a rainbow overlay for an eye-catching look. We've also integrated a CUB MATCH™ sockliner that uses a tiger graphic to help kids recognize the left shoe from the right shoe.

Lastly, durable properties, like the toe rubber stitching and solid rubber outsole are designed to expand the shoe's lifespan.

FEATURES

Breathable mesh upper
GEL® technology improves impact absorption and creates a softer feeling at footstrike
E.V.A cushioning
Solid rubber outsole and toe rubber stitching improve durability

Breathable mesh upper
CUB MATCH™ sockliner uses a tiger graphic to help kids recognize the left shoe from the right shoe
E.V.A cushioning
The solid rubber outsole and toe rubber stitching improve durability



GEL-EXCITE™ 10 GS - KIDS

Intro Date: **06/01/2023**

M.S.R.P. GS: **\$90.00** | PS: **\$80.00**



GEL-EXCITE™ 10 GS
Style #: 1014A298-002
Color: BLACK/PURE AQUA
EOL: 11/30/2023



GEL-EXCITE™ 10 GS
Style #: 1014A298-401
Color: DEEP OCEAN/BRIGHT ORANGE
EOL: 11/30/2023



GEL-EXCITE™ 10 GS
Style #: 1014A298-402
Color: EGGPLANT/GLOW YELLOW
EOL: 11/30/2023



GEL-EXCITE™ 10 GS
Style #: 1014A298-400
Color: ILLUSION BLUE/GLOW YELLOW
EOL: 11/30/2023

PRE EXCITE™ 10 PS - KIDS

GS: **z00540z** | PS: **z00040z**

GS Size: **1-7** | PS: **K10,K11,K12,K13,1-3**



PRE EXCITE™ 10 PS
Style #: 1014A297-400
Color: ILLUSION BLUE/GLOW YELLOW
EOL: 11/30/2023



PRE EXCITE™ 10 PS
Style #: 1014A297-402
Color: EGGPLANT/GLOW YELLOW
EOL: 11/30/2023



PRE EXCITE™ 10 PS
Style #: 1014A297-002
Color: BLACK/PURE AQUA
EOL: 11/30/2023



PRE EXCITE™ 10 PS
Style #: 1014A297-401
Color: DEEP OCEAN/BRIGHT ORANGE
EOL: 11/30/2023

STACK HEIGHT: **00mm-00mm** // DROP: **0mm** // WEIGHT: **0oz/0g***

STACK HEIGHT: **00mm-00mm** // DROP: **0mm** // WEIGHT: **0oz/0g***

PRE VENTURE™ 9

The PRE VENTURE™ 9 GS (Grade School) shoe is designed to provide good cushioning for active feet.

Meanwhile, the outsole features an advanced traction pattern that's versatile for various surfaces.

FEATURES

Engineered mesh upper improves breathability

Trail-specific outsole pattern improves grip on various surfaces



PRE VENTURE™ 9 GS - KIDS

Intro Date: 06/01/2023

M.S.R.P. GS: **\$85.00** | PS: **\$75.00**



PRE VENTURE™ 9 GS

Style #: 1014A276-002
Color: BLACK/BRIGHT ORANGE
EOL: 11/30/2023



PRE VENTURE™ 9 GS

Style #: 1014A276-403
Color: DEEP OCEAN/HOT PINK
EOL: 11/30/2023

PRE VENTURE™ 9 PS - KIDS

GS: z05240z | PS: z05730z

GS Size: 1-7 | PS: K10,K11,K12,K13,1-3



PRE VENTURE™ 9 PS

Style #: 1014A277-403
Color: DEEP OCEAN/HOT PINK
EOL: 11/30/2023



PRE VENTURE™ 9 PS

Style #: 1014A277-002
Color: BLACK/BRIGHT ORANGE
EOL: 11/30/2023

STACK HEIGHT: 17.5mm-9mm // DROP: 8.5mm

STACK HEIGHT: 15mm-8mm // DROP: 7mm

CONTEND™ 8 GS | PS

The CONTEND™ 8 GS (Grade School) shoe is designed for young feet. Details like the toecap, toe rubber stitching, and solid rubber outsole increase durability and lengthen the shoe's lifespan.

The CONTEND™ 8 PS (Pre-School) shoe is designed for young feet. Each shoe in the collection features a hook and loop fastening system that helps keep feet stabilized. Details like the toecap, toe rubber stitching, and solid rubber outsole increase durability and lengthen the shoe's lifespan. Additionally, our CUB MATCH™ sockliner is printed with a tiger caricature that helps kids identify the right and left shoe.

FEATURES

The toecap, toe rubber stitching, and solid rubber outsole improve durability
At least 20% of the upper's material is made with recycled polyester
The sockliner is produced with the solution dyeing process that reduces water usage by approximately 33% and carbon emissions by approximately 45% compared to the conventional dyeing technology

Hook and loop fastening system
CUB MATCH™ sockliner uses a tiger graphic to help kids recognize the left shoe from the right shoe
The toecap, toe rubber stitching, and solid rubber outsole improve durability
At least 20% of the upper's material is made with recycled polyester
The sockliner is produced with the solution dyeing process that reduces water usage by approximately 33% and carbon emissions by approximately 45% compared to the conventional dyeing technology



CONTEND™ 8 GS - KIDS

Intro Date: **06/01/2023**

M.S.R.P. GS: **\$80.00** | PS: **\$75.00**



CONTEND™ 8 GS
Style #: 1014A259-007
Color: BLACK/BRIGHT ORANGE
EOL: 11/30/2023



CONTEND™ 8 GS
Style #: 1014A259-406
Color: ILLUSION BLUE/PURE SILVER
EOL: 11/30/2023



CONTEND™ 8 GS
Style #: 1014A259-407
Color: EGGPLANT/AQUAMARINE
EOL: 11/30/2023



CONTEND™ 8 GS
Style #: 1014A259-702
Color: DIVA PINK/PURE SILVER
EOL: 11/30/2023

CONTEND™ 8 PS - KIDS

GS: **z00040z** | PS: **z05730z**

GS Size: **1-7** | PS: **K10,K11,K12,K13,1-3**



CONTEND™ 8 PS
Style #: 1014A293-005
Color: BLACK/GLOW YELLOW
EOL: 11/30/2023



CONTEND™ 8 PS
Style #: 1014A293-006
Color: BLACK/HOT PINK
EOL: 11/30/2023



CONTEND™ 8 PS
Style #: 1014A258-007
Color: BLACK/BRIGHT ORANGE
EOL: 11/30/2023



CONTEND™ 8 PS
Style #: 1014A258-407
Color: EGGPLANT/AQUAMARINE
EOL: 11/30/2023

STACK HEIGHT: **20mm-10mm** // DROP: **10mm**

STACK HEIGHT: **17.5mm-9.5mm** // DROP: **8mm**

CONTEND™ 8

The CONTEND™ 8 TS (Toddler Size) shoe is designed for young feet.

Each shoe in the collection features a hook and loop fastening system that helps keep feet stabilized. Details like the toecap, toe rubber stitching, and solid rubber outsole increase durability and lengthen the shoe's lifespan.

Additionally, our CUB MATCH™ sockliner is printed with a tiger caricature that helps kids identify the right and left shoe.

FEATURES

Hook and loop fastening system

CUB MATCH™ sockliner uses a tiger graphic to help kids recognize the left shoe from the right shoe

The toecap, toe rubber stitching, and solid rubber outsole improve durability

At least 20% of the upper's material is made with recycled polyester

The sockliner is produced with the solution dyeing process that reduces water usage by approximately 33% and carbon emissions by approximately 45% compared to the conventional dyeing technology



CONTEND™ 8 TS - KIDS

Intro Date: 06/01/2023

M.S.R.P.: \$70.00



CONTEND™ 8 TS
Style #: 1014A260-400
Color: ILLUSION BLUE/GLOW YELLOW
EOL: 11/30/2023



CONTEND™ 8 TS
Style #: 1014A260-401
Color: EGGPLANT/AQUAMARINE
EOL: 11/30/2023

CONTEND™ 8 TS SCHOOL YARD - KIDS

z00530z

Size: K4,K5,K6,K7,K8,K9



CONTEND™ 8 TS SCHOOL YARD
Style #: 1014A313-800
Color: BRIGHT ORANGE/WHITE
EOL: 11/30/2023



CONTEND™ 8 TS SCHOOL YARD
Style #: 1014A313-700
Color: PINK CAMEO/COTTON CANDY
EOL: 11/30/2023

STACK HEIGHT: 8.6mm-5.7mm // DROP: 3mm

STACK HEIGHT: 8.6mm-5.7mm // DROP: 3mm

MEN'S FOOTWEAR SIZES

US	4	4.5	5	5.5	6	6.5	7	7.5	8	8.5	9	9.5	10	10.5	11	11.5	12
UK	3	3.5	4	4.5	5	5.5	6	6.5	7	7.5	8	8.5	9	9.5	10	10.5	11
EU	36	37	37.5	38	39	39.5	40	40.5	41.5	42	42.5	43.5	44	44.5	45	46	46.5
CM	22.5	23	23.5	24	24.5	25	25.25	25.5	26	26.5	27	27.5	28	28.25	28.5	29	29.5

WOMEN'S FOOTWEAR SIZES

US	5.5	6	6.5	7	7.5	8	8.5	9	9.5	10	10.5	11	11.5	12
UK	3.5	4	4.5	5	5.5	6	6.5	7	7.5	8	8.5	9	9.5	10
EU	36	37	37.5	38	39	39.5	40	40.5	41.5	42	42.5	43.5	44	44.5
CM	22.5	23	23.5	24	24.5	25	25.25	25.5	26	26.5	27	27.5	28	28.25

*Weights are approximate and based off of a men's U.S. size 9 and women's U.S. size 7.

*Weights are approximate and based off of a Grade School U.S. size 4, Per School U.S. size K13, Toddler U.S. size K6.

UNISEX FOOTWEAR SIZES

UNISEX	4	4.5	5	5.5	6	6.5	7	7.5	8	8.5	9	9.5	10	10.5	11	11.5	12	12.5	13	14
MEN'S	4	4.5	5	5.5	6	6.5	7	7.5	8	8.5	9	9.5	10	10.5	11	11.5	12	12.5	13	14
WOMEN'S	5.5	6	6.5	7	7.5	8	8.5	9	9.5	10	10.5	11	11.5	12	12.5	13	13.5	14	14.5	15
EU	36	37	37.5	38	39	39.5	40	40.5	41.5	42	42.5	43.5	44	44.5	45	46	46.5	47	48	49
CM	22.5	23	23.5	24	24.5	25	25.25	25.5	26	26.5	27	27.5	28	28.25	28.5	29	29.5	30	30.5	31

KIDS FOOTWEAR SIZING

US	K10	K11	K12	K13	1	1.5	2	2.5	3	3.5	4	4.5	5	5.5	6	6.5	7
EU	27	28.5	30	31.5	32.5	33	33.5	34.5	35	35.5	36	37	37.5	38	39	39.5	40
CM	17	17.5	18.5	19.5	20	20.5	21	21.5	22	22.25	22.5	23	23.5	24	24.5	25	25.5

CONTACT INFORMATION

Nova Scotia, New Brunswick, Prince Edward Island, Newfoundland Pellerin Sport Marketing

Guy Pellerin
30 Chevreuil Court
Dieppe, NB
E1A 8M2
Tel.: 506-850-6360
Cell: 506-850-6360
E-mail: guy.pellerin@me.com

Christian Boudreau
428 Gaspe Street
Dieppe, NB
E1A 6V8
Cell: 506-866-0038
E-mail: christian.boudreau@icloud.com

Montréal, Laval, Mauricie, Laurentides Formula G Agency

Jeffrey Girard
Tel.: 514-887-1326
E-mail: jeffreygirard@me.com

Karen Bellm
Tel.: 514-833-1329
E-mail: karenbellm@icloud.com

Sébastien Rhéaume
Cell: 514-792-9058
E-mail: shiraz777@sympatico.ca

Montréal, Rive Sud, Estrie, Centre du Québec Les Agences Guy Chartier

Guy Chartier
597, Chemin des Patriotes
St-Charles-sur-Richelieu, QC
J0H 2G0
Cell: 514-893-0111
E-mail: guychartier@me.com

Marie-Claude Gagné
Cell: 514-975-0175
E-mail: mcsports@videotron.ca

Bois Francs, Beauce, Région de Québec, Bas St-Laurent, Gaspésie, Côte Nord, Saguenay, Lac St-Jean

Agence Lewis Lévesque
Lewis Lévesque
790, route jean Gauvin, Local 250
Québec, QC
G1X 0B6
Tel.: 418-848-0741
Cell: 418-806-2220
E-mail: lewis_levesque@me.com
Caroline Lepage
65 Wildwood Trail
Barrie, ON
L4N 7Z1
E-mail: order_lewis@me.com

Eastern, Northern & South East Ontario, Toronto Metro J.O Sales and Marketing

John Omazic
29, Atlantic Avenue
Toronto, ON
M6K 3E7
Tel: 416-576-6708
E-mail: john.omazic@bellnet.ca

Quan & Co. Inc.

Christopher Quan
31 Millbrook Crescent
Toronto, ON
M4K 1H2
Tel.: 416-738-3059
E-mail: christopherquan@gmail.com

South-Western Ontario Opyc Enterprises

Dean Opyc
43 Coventry Drive
Kitchener, ON
N2A 1N2
Tel.: 519-893-3839
Cell: 519-504-3339
Fax: 519-893-2028
E-mail: deanopyc@rogers.com

Quan & Co. Inc.

Christopher Quan
31 Millbrook Crescent
Toronto, ON
M4K 1H2
Tel.: 416-738-3059
E-mail: christopherquan@gmail.com

British Columbia**Michael Shewchuk Sales & Training**

112 West 8th Ave
Vancouver, BC
V5Y 1N2
Tel.: 250-415-6825
E-mail: michael.shewchuk@gmail.com

LeftCoast Sales Inc.

Mike Whittle
112 West 8th Ave
Vancouver, BC
V5Y 1N2
Cell: 778-980-8899
E-mail: Leftcoastemail@gmail.com

Alberta/NT/YT**Sequence Sports Marketing**

Chris Broderick
1027 80 Ave SW.
Calgary, AB
T2V 0V6
Tel.: 403-650-4797
E-mail: chris@sequencesm.com

Manitoba, Saskatchewan**& Ontario Lake Head****McOuat Agencies**

Scott McOuat
20 Tadman Cres
Oakbank, MB
R5N 0M9
Tel.: 204-663-3738
Cell: 204-782-0585
E-mail: scottandwendy@mcouatagencies.com

ASICS Canada

101 Rue Des Abenakis, Suite 401
Sherbrooke, QC
J1H 1H1

Account Customer Service

Existing Authorized ASICS Retailers who are inquiring about their orders, product information and or have a warranty request, please contact ASICS Canada below.

Monday – Friday
8:30am to 5:00pm EST
Tel.: 1-800-567-3405
E-mail: wholesale-customer-care-CA@asics.com
E-mail: retour-return-can@asics.com

Consumer Customer Service & Warranty

Consumers who are inquiring about their online order, product information and or have a warranty question, please contact ASICS Canada below.

Monday – Friday
8:30am to 5:00pm EST
E-mail: customer-care-can@asics.com
E-mail: warranty-CA@asics.com

2023 SALES POLICIES

SALES CONDITIONS

Sales are FOB point of departure (Sherbrooke). Payment terms are NET 30 days from shipping date unless otherwise communicated from the ACA credit department. Payment terms are subject to change without prior notice. Interest of 2% per month (24% per year) is charged on all overdue accounts. Discounts will be cancelled if payment terms are not respected. Deductions from payments will not be allowed unless authorized. Prices are subject to change without prior notice. Orders are invoiced at prices prevailing at time of shipment except for booking program. Booking and repeat discounts apply on back orders. Invoice includes Government Sales Tax (GST) and Provincial Sales Taxes where applicable or Harmonized Sales Tax where in effect.

MISSING MERCHANDISE

All merchandise should be verified upon its arrival. Missing or defective merchandise should be reported directly to the transporter. ACA is not responsible for loss and damage caused in transportation. Missing merchandise in a carton caused by shipping must be reported to ACA customer service within 10 days of receipt of merchandise. Claims must include the invoice number and bill of lading number. Claims will not be accepted after 10 days.

RETURN POLICY AND CLAIMS

ACA reserves the right to approve authentic returns due to manufacturing defects, late shipment or other legitimate reasons. All returns must be authorized in advance by ACA. Accounts must request authorization to return merchandise to ACA. Upon approval, ACA will provide a Return Authorization Number (RA#) to box. Merchandise returned without a number will be refused. Collect shipments of returned merchandise will not be accepted. Freight must be prepaid by the dealer.

NEW MERCHANDISE

ACA reserves the right to charge a 20 % restocking fee for all returns of non-defective merchandise. Collect shipments of returned merchandise will not be accepted. Freight must be prepaid by the dealer.

BOOKING ORDER

A booking order is an order which requests delivery 150 days or more after the order is received at ACA. The applicable discount is based on the Booking Program valid at the time the order is placed. To ensure complete delivery, the order must be submitted according to the deadline outlined on A.C.A's Booking Program. Minimum of 5 pairs per SKU per delivery. Each booking order must be signed by the client or authorized personnel and should include a purchase order number.

REPEAT ORDER

A repeat order is an order which requests delivery 7 days or more after the order is received at ACA. The applicable discount is based on the Discount Program valid at the time the order is placed. To ensure complete delivery, each order must be signed by authorized personnel and should include a purchase order number.

ORDER CANCELLATION

Order cancellations must be completed a minimum of 35 days prior to the requested shipping date for booking orders and 5 days prior to the shipping date for Repeat orders. ACA reserves the right to affect the customer discount as a result of cancellation.

ORDER ADJUSTMENTS

Any reduction of a booking order could result in booking discount to be cancelled. Size revision is not permitted unless authorized by ASICS CANADA CORP Sales Management. For further information, please contact your ASICS Sales Representative.

NO TRANSSHIPMENT

Retailer will sell ASICS products only to consumers who buy the products for their own needs and not for resale. The resale or transfer of products by Retailer to another Retailer or business is strictly prohibited, and in the event of such resale or transfer, ASICS may, in its absolute discretion upon written notice to Retailer, terminate account agreement or cancel all outstanding orders and withhold shipment of future orders of products to Retailer.

POLITIQUES DE VENTES 2020 COMMANDES

CONDITIONS DE VENTE

Toutes les ventes sont FOB à partir du point d'expédition. Les termes de paiement réguliers sont de NET 30 jours de la date d'expédition. Des frais mensuels de 2 % (24 % par année) sont ajoutés aux factures en souffrance. Un paiement en souffrance annule tout escompte. Aucune déduction de paiement ne sera acceptée à moins qu'un avis de crédit n'ait été émis à cet effet. Les prix peuvent changer sans préavis. Les marchandises sont facturées au prix courant à la date d'envoi, sauf pour les programmes de placement. L'escompte de placement et réapprovisionnement s'applique sur les articles en services (B/O). La taxe sur les produits et services (TPS) est incluse sur la facture. La taxe de vente provinciale est également incluse sur la facture en cas échéant. La taxe de vente harmonisée est appliquée dans les provinces où elle est en vigueur.

MARCHANDISE MANQUANTE

Les marchandises doivent être vérifiées et comptées dès leur arrivée chez le client. Tout article manquant ou endommagé doit être immédiatement noté sur le reçu de livraison et communiqué au transporteur. ACA ne se tient pas responsable des pertes ou des dommages causés au cours du transport. Tout article manquant dans une boîte fermée, causé par une erreur de triage de triage ou d'emballage, doit être signifié dans les 10 jours suivant la date de réception de la marchandise. Au-delà de cette période, aucune correction ne sera considérée. Toute réclamation doit être accompagnée des numéros de facturation et d'expédition.

POLITIQUE DE RETOURS & RÉCLAMATIONS

ACA se réserve la décision finale d'approbation de retours pour des produits défectueux, d'expéditions tardives ou toutes autres raisons légitimes. Le service à la clientèle d'ACA doit préalablement autoriser tout retour de marchandise selon la demande reçue par le détaillant. Après approbation, ACA émettra un numéro de retour (RA#) à inscrire clairement sur l'extérieur de la boîte à retourner. La marchandise retournée sans numéro de retour (RA#) ne sera pas acceptée. La marchandise doit être expédiée, port payé, par le détaillant.

MARCHANDISE NEUVE

ACA se réserve le droit de facturer 20 % de frais de remise en tablette pour un retour de marchandise non-défectueuse. La marchandise doit être expédiée, port payé, par le détaillant sous contrainte de n'être acceptée du transporteur.

COMMANDE DE PLACEMENT (BOOKING)

Une commande de placement doit être reçue par ACA un minimum de 150 jours avant la date de livraison requise. L'escompte sera calculé selon le programme de placement en vigueur au moment de la commande. Pour assurer une livraison complète, la commande doit être placée selon l'échéancier prévu par ACA. Minimum de 5 paires par modèle par livraison. Toute commande de placement doit être signée par le client ou son employé autorisé et contenir un numéro de bon de commande. Une seule commande de placement par mois est permise par client.

COMMANDE RÉGULIÈRE (REPEAT)

Une commande régulière doit être reçue par ACA un minimum de 7 jours ouvrables avant la date de livraison requise. Toute commande régulière doit contenir un numéro de bon de commande (P.O.) émis par le client.

ANNULATION DE COMMANDE

Toute annulation de commande doit survenir 5 jours précédant la date de livraison pour une commande régulière, et 35 jours précédant la date de livraison pour une commande de placement. ACA se réserve le droit d'affecter l'escompte du client sur l'ensemble de ses commandes suite à une annulation.

MODIFICATION DE COMMANDE

Toute réduction de commande de placement pourrait entraîner l'annulation de l'escompte de placement. La révision de taille n'est pas permise sans l'autorisation de la direction des ventes de Corporation ASICS CANADA. Pour plus de renseignements, svp contacter votre représentant des ventes ASICS.

TRANSBORDEMENT INTERDIT

Le détaillant vendra les produits ASICS uniquement aux consommateurs qui les achètent pour leurs propres besoins et non pour les revendre. La revente ou le transfert de produits d'un détaillant à un autre détaillant ou à une autre entreprise est strictement interdite. Dans l'éventualité d'une telle revente ou d'un tel transfert, ASICS peut, selon sa discrétion et sur préavis écrit au détaillant fautif, résilier la convention du compte ou annuler toutes les commandes futures et retenir l'expédition des commandes en cours.

