



# PIONEERING SHOEMAKERS SINCE 1825

AUTUMN WINTER 2020  
CANADA INDEPENDENT SPECIALTY CATALOG

*Clarks*®



For years you may recall, we produced our first... These shoes are still lighter...  
 You may recall, we produced our first... These shoes are still lighter...  
 comfortable. The polyurethane soles are...  
 But for the uppers we've used...  
 as soft as glass leather and rubber...  
 And the ankle...  
 comfort for...  
 We'll reply We took the hint and...  
 made shoes based on our Polyvelvit...  
 Something for young groovers as...  
 well as their dads.

# Hard-wearing shoes needn't be hard to wear.

Advertisement for Clarks shoes featuring a grid of shoes with different national flags and a woman in a white dress.

Advertisement for Clarks Tor Shoes featuring a woman in a pink dress and a woman in a white coat.

Turn up the brightness

Switch on to Polyvelvits

CLARKS TOR SHOES  
DYED TO MATCH ANY FROCK

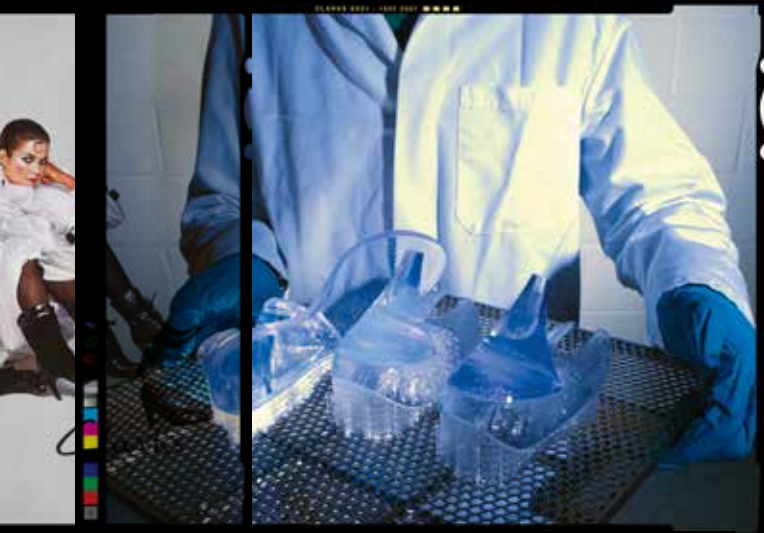
Advertisement for Clarks Hygienic Boots featuring a factory scene and a historical advertisement for C.&J. Clarks.

AIR CIRCULATION VIA TECHNOLOGY

EASY WALKING VIA TECHNOLOGY

THE HYGIENIC BOOTS  
MANUFACTURED ON ANATOMICAL PRINCIPLES  
BY  
C.&J. CLARKS  
STREET NEAR GLASTONBURY, SOMERSETSHIRE





**THEN.  
 NOW.  
 ALWAYS.**



## **TABLE OF CONTENTS**

WOMENS CLARKS.....	7-10
WOMENS ORIGINALS .....	11
WOMENS UNSTRUCTURED .....	12-15
WOMENS COLLECTION.....	16-21
WOMENS CLOUDSTEPPERS.....	22-23
MENS CLARKS .....	27-30
MENS ORIGINALS .....	31
MENS UNSTRUCTURED.....	32-34
MENS COLLECTION.....	35-37
TECHNOLOGY, TERMS, CONDITIONS AND CONTACT INFORMATION .....	46



# AW20 WOMENS COLLECTION

# Clarks®



## CLARKDALE ARLO

M 5-10 W 6-10

26154713 BLACK LEATHER

**26154268 DALMATIAN PRINT**

26151326 DARK OLIVE SUEDE

26154246 LEOPARD PRINT COMBI

26151331 PEBBLE SUEDE

26154248 TAN LEATHER

26136720 BLACK SUEDE

26151332 MERLOT SUEDE

26154610 ROSE SUEDE



## CLARKDALE LACE

M 6-10, 11

**26152873 BLACK SUEDE WARMLINED**

26152872 PEBBLE SUEDE WARMLINED



## DESERT BOOT 2

M 6-10, 11

26155674 DARK TAN SNAKE

26155671 BEESWAX

26155666 BLACK SUEDE

26155667 BLACK / WHITE LEATHER

26155660 SAND SUEDE

26155672 BLK NUBUCK WARMLINED SUEDE

26155662 BLUE SUEDE

26155669 DARK TAN WARMLINED SUEDE

26155673 GOLD DISTRESSED LEATHER

26155670 LEOPARD PRINT SUEDE

**26155665 RED SUEDE**

26155668 SILVER DISTRESSED LEATHER

26155664 WHITE LEATHER



## KAYLIN CARA 2

M 5-10 W 5-10

26151165 DARK TAN SUEDE

**26152876 NAVY LEATHER**

26154954 PRALINE PATENT

26154701 BLACK LEATHER



## KAYLIN FERN 2

M 6-10 W 6-10

**26154703 BLACK LEATHER**

26151194 DARK TAN SUEDE



## KAYLIN85 T-BAR 2

M 6-10

**26151198 DALMATIAN ANIML PRNT COMBI**



## LAINA55 COURT 2

M 6-10

26151380 BLACK LEATHER

**26151163 DALMATIAN ANIMAL PRINT**

26154638 LEOPARD PRINT SUEDE



## LAINA55 BOOT2

M 6-10

26151358 BLACK LEATHER

**26151363 DARK TAN SNAKE**

26154706 BLACK SUEDE

26154632 LEOPARD PRINT SUEDE





---

**ORIANNA HI**

---

M 6-10

**26151677 BLACK LEATHER**

26151676 MERLOT HI SHINE LEATHER

26154183 WHITE LEATHER



---

**ORIANNA TOP**

---

M 5-10, 11

**26152604 BLACK NUBUCK**

26152326 BROWN SNUFF LEATHER



---

**ORINOCO2 HI**

---

M 6-10

26151670 BLACK WARMLINED LEATHER

26151685 DARK BROWN LEATHER

**26151674 TAN WARMLINED LEATHER**



---

**ORINOCO2 LACE**

---

M 6-10, 11, 12 W 6-10, 11, 12

26152327 BLACK LEATHER

26152333 BROWN SNUFF LEATHER

**26153928 DARK OLIVE LEATHER**



---

**ORINOCO2 TOP**

---

M 6-10, 11, 12 W 6-10, 11, 12

26152332 BLACK LEATHER

**26152326 BROWN SNUFF LEATHER**



---

**PURE RIDE**

---

M 6-10, 11

26151678 BLACK LEATHER

**26151672 DARK TAN SUEDE**



---

**PURE TONE**

---

M 6-10, 11 W 7-10

26132485 BLACK COMBI

**26151367 BLAK WHITE COMBI LEATHER**

26151368 DARK TAN SNAKE COMBI

26154148 NAVY SUEDE

26132486 NUDE LEATHER

26154154 RED SUEDE

26151369 SILVER METALLIC

26154175 GOLD METALLIC



---

**PURE VIOLA**

---

M 6-10, 11

26154176 BLACK AND WHITE INTEREST

26143931 BLACK LEATHER

**26146302 TAN LEATHER**

26154179 DARK TAN SNAKE

26155547 LEOPARD PRINT PONY



---

**PURE2 LOAFER**

---

M 6-10, 11

26151827 BLACK LEATHER

26154206 LEOPARD PRINT COMBI

26151828 WHITE LEATHER

26154202 MERLOT PATENT

**26154196 RED PATENT**

26151825 WHITE INTEREST LEATHER





---

**PURE2 PUMP**

M 6-10

---

26152809 BLACK LEATHER

---

**26154205 LEOPARD PRINT SUEDE**

---

26154195 NAVY CROC PATENT

---

26154203 MERLOT CROC PATENT



---

**RETRO RUN**

M 6-10

---

**26152207 BLACK CROC**

---

26151806 TAN SNAKE COMBI

---

26152202 WHITE CROC



---

**SHEER FLORA 2**

M 5-10

---

26155112 BLACK LEATHER

---

**26151372 DALMATIAN ANIMAL PRINT**

---

26151371 DARK TAN SNAKE



---

**SHEER ROSE 2**

M 6-10

---

26154698 BLACK LEATHER

---

**26151387 TAN SNAKE COMBI**



---

**TRACE PINE**

M 6-10

---

**26143728 BLACK LEATHER**

---

26146374 BURGUNDY LEATHER

# CLARKS ORIGINALS




---

## ARISA DESERT

M 6-10

26150823 BLACK SUEDE

26151032 DARK SAND SUEDE

**26150825 LEOPARD PRINT HAIRY**

---




---

## DESERT BOOT.

M 6-10

26155523 BEESWAX

26155524 BLACK SUEDE

26155525 SAND SUEDE

**26154162 BLUE GREY SUEDE**

26154761 CHERRY SUEDE

26154762 GINGER SUEDE

26154161 LEOPARD PRINT PONY

26154163 SANDSTONE SUEDE

---




---

## DESERT MALI.

M 6-10

26155529 BLACK POLISHED

**26155530 CHESTNUT LEATHER**

---




---

## WALLABEE BOOT.

M 6-10

26155521 BLACK SUEDE

26154166 BLUE GREY SUEDE

26155520 MAPLE SUEDE

26154791 RED PATENT

**26154165 ROSE SUEDE**

---




---

## WALLABEE.

M 5-10, 11

26155544 BEESWAX

26155522 BLACK SUEDE

**26155393 GREY SUEDE**

26155545 MAPLE SUEDE

26151236 PURPLE COMBI

26151245 RED COMBI SUEDE

26150868 SANDSTONE COMBI

---




---

## WALLABEE WEDGE

M 5-10, 11

26150791 BLACK COW PRINT

26129981 BLACK NUBUCK

**26150866 TAN COW PRINT**

---




---

## WALLACRAFT LO

M 6-10

26148632 BLACK NUBUCK

**26148635 OAK NUBUCK**

---



# Clarks unstructured




---

### MADERA LO 2

M 6-10

**26151709 BLACK LEATHER**

---




---

### MADERA WAY

M 6-10, 11 W 6-10, 11

26151073 BLACK SUEDE

**26151069 BURGUNDY SUEDE**

26151072 DARK GREY SUEDE

---




---

### ROSELY LO

N 7-9 M 6-10, 11 W 6-10, 11

26152534 BLACK LEATHER

**26152536 DARK BROWN LEATHER**

26152537 DARK TAN LEATHER

M 6-10, 11 W 6-10, 11

26154468 DARK OLIVE SUEDE

26152535 BURGUNDY SUEDE

---




---

### ROSELY STEP

N 7-9 M 6-10, 11 W 6-10, 11

**26153897 BLACK LEATHER**

26153896 DARK BROWN LEATHER

26153898 DARK TAN LEATHER

---




---

### ROSELY ZIP

N 7-9 M 6-10, 11 W 6-10, 11

**26152562 BLACK LEATHER**

26152567 DARK BROWN LEATHER

26152563 DARK TAN LEATHER

---




---

### SHAYLIN AVE

M 6-10, 11 W 6-10, 11

26153596 BLACK SUEDE

**26153640 BRONZE METALLIC LEATHER**

26153588 DARK GREY SUEDE

26154474 NAVY SUEDE

---




---

### SHAYLIN LACE

M 6-10, 11 W 6-10, 11

26153593 BLACK LEATHER

**26153591 BLACK PATENT LEATHER**

---




---

### SHAYLIN STEP

M 6-10, 11

26153589 BLACK LEATHER

**26154480 BLACK LEATHER/MICRO DOT**

---



---

**TAWNIA BAND**

M 6-10, 11 W 6-10, 11

26154501 BLACK CRINKLE PATENT LTHR

26152408 BLACK LEATHER

26152366 BLACK SUEDE

**26152410 NAVY SUEDE**

26152409 PEBBLE METALLIC LEATHER

---

---

**TAWNIA MID**

M 6-10, 11

26152372 BLACK LEATHER

**26152369 BLACK CRINKLE PATENT LTHR**

---

---

**UN ADORN LOOP**

N 7-10, 11, 12 M 5-10, 11, 12

W 6-10, 11, 12

26147430 BLACK LEATHER

**26147431 DARK BROWN LEATHER**

---



---

**UN BLUSH COVE**

M 5-10, 11, 12 W 6-10, 11

26154450 BEIDGE SUEDE COMBI

26151845 BLACK LEATHER

26152013 BLACK SUEDE COMBI

**26154445 LEOPARD PONY HAIR LEATHER**

26154451 RED SUEDE COMBI

---

---

**UN BLUSH EASE**

N 7-10, 11, 12 M 5-10, 11, 12

W 6-10, 11, 12

**26151738 BLACK CROC PATENT LEATHER**

26144968 BLACK LEATHER

26154443 LEOPARD PONY HAIR LEATHER

26154444 RED SUEDE

---

---

**UN DAMSON HI**

M 5-10, 11, 12

26151066 BLACK LEATHER

**26151760 BLACK SUEDE**

---



---

**UN DAMSON MID**

M 5-10, 11, 12 W 6-10, 11, 12

26144675 BLACK LEATHER

**26146115 BROWN LEATHER**

---

---

**UN DAMSON STEP**

N 7-10, 11, 12 M 5-10, 11, 12

W 6-10, 11, 12 XW 6-10, 11, 12

**26155112 BLACK LEATHER**

---

---

**UN DAMSON VIBE**

N 7-10, 11, 12 M 5-10, 11, 12

W 6-10, 11, 12 XW 6-10, 11, 12

**26144342 BLACK LEATHER**

---





---

**UN DAMSONADELE**

N 7-10, 11, 12 M 5-10, 11, 12  
W 6-10, 11, 12 XW 6-10, 11, 12  
26146981 BLACK LEATHER  
**26146982 BROWN LEATHER**

---



---

**UN DARCEY BOW**

M 6-10, 11 W 6-10, 11  
26151519 BLACK LEATHER  
26152826 BURGUNDY SUEDE/PATENT  
26151515 NAVY SUEDE/PATENT  
**26154464 RED SUEDE/PATENT**

---



---

**UN DARCEY CAP2**

M 5-10, 11, 12 W 6-10, 11, 12  
26155007 BLACK LEATHER  
26155010 BLACK NUBUCK/LEATHER  
26155011 LEOPARD PONY HAIR LEATHER  
**26155008 NAVY INT NUBUCK/LEATHER**

---



---

**UN DARCEYEASE2**

M 5-10, 11, 12 W 6-10, 11, 12  
26155059 BLACK CROC PATENT LEATHER  
26155062 BLACK LEATHER  
26155063 BLACK/WHITE PONY HAIR  
**26155061 PEBBLE METALLIC LEATHER**

---



---

**UN MAUI FREE**

M 6-10, 11  
**26152004 BLACK LEATHER/SUEDE COMBI**  
26152002 PEBBLE LEATHER/SUEDE COMBI

---



---

**UN MAUI LACE**

M 5-10, 11 W 6-10, 11  
26151759 BLACK CROC LEATHER  
**26151761 BURGUNDY CROC LEATHER**

---



---

**UN MAUI TIE**

M 6-10, 11  
26153869 BLACK LEATHER  
26153871 DARK BLUSH LEATHER  
26153870 DARK OLIVE LEATHER  
**26152052 WHITE LEATHER**

---



---

**UN RIO RUN**

M 5-10, 11, 12 W 6-10, 11  
26151734 BLACK NUB/LEA/SUEDE COMBI  
**26151733 SAGE LEATHER COMBI**  
26150523 WHITE TEXTILE SUEDE COMBI

---



---

**UN RIO STRAP**

M 5-10, 11, 12 W 6-10, 11  
26145614 BLACK LEATHER  
**26151744 LEOPARD PONY HAIR**  
M 5-10, 11, 12  
26154561 BURDGUNY SUEDE  
26152830 DARK OLIVE SUEDE

---



---

**UN RIO TIE**

M 5-10, 11, 12 W 6-10, 11, 12

26148255 BLACK LEATHER

26148717 NAVY NUBUCK

26148716 STONE NUBUCK

**26148256 WHITE LEATHER**

---

---

**UN.LOOP**

N 7-10, 11, 12 M 5-10, 11, 12

W 6-10, 11, 12

**26085071 BLACK**

---

---

**WAVE2.0 LACE.**

N 6-10, 11 M 5-10, 11, 12

W 6-10, 11 XW 6-10, 11

26152381 BLACK NUBUCK/TEXTILE COMBI

26155213 BLACK TUMBLED LEATHER

**26152391 NAVY NUBUCK/TEXTILE COMBI**

26154592 RED NUBUCK/TEXTILE COMBI

26152395 SAGE NUBUCK/TEXTILE COMBI

26152382 TAN NUBUCK/TEXTILE COMBI

---



---

**WAVE2.0 MID.**

N 6-10, 11 M 5-10, 11, 12

W 6-10, 11

**26153657 BLACK NUBUCK/TEXTILE COMBI**

26153658 SAGE NUBUCK/TEXTILE COMBI

---

---

**WAVE2.0 STEP.**

N 6-10, 11 M 5-10, 11, 12

W 6-10, 11 XW 6-10, 11

26152404 BLACK NUBUCK/TEXTILE COMBI

26156254 NAVY NUBUCK/TEXTILE COMBI

**26152359 STONE NUBUCK/TEXTILE COMBI**

---



collection  
BY  
*Clarks*



**ADREENA HOPE**

M 5-10, 11, 12 W 6-10, 11, 12

**26153045 BLACK LEATHER**

26153044 BROWN LEATHER



**ADREENA SHOW**

M 5-10, 11, 12 W 6-10, 11, 12

26153039 BLACK LEATHER

**26154006 DARK TAUPE LEATHER**



**ADRIEL LILY**

M 5-10, 11, 12 W 6-10, 11

26153050 BLACK LEATHER SYN COMBI

**26153048 BLACK SUEDE**



**ADRIEL VIOLA**

M 5-10, 11, 12 W 6-10, 11

26129359 BLACK LEATHER

26151329 BLACK CROC LEATHER

26129360 BLACK PATENT

**26151330 BURGUNDY CROC LEATHER**

26153995 DARK TAN LEOPARD SUEDE

26129361 NAVY LEATHER

26146726 PRALINE SYNTHETIC PATENT

26146727 TAUPE SYNTHETIC SNAKE PRT



**ANDIE GO**

M 5-10, 11, 12

26154351 BLACK WATERPROOF LEATHER

**26154354 MAHOGANY WATERPROOF LTHR**



**CAMZIN DIME**

M 5-10, 11, 12 W 6-10, 11, 12

26153035 BLACK LEATHER

**26153063 DARK BROWN LEATHER**

26153056 DARK TAN LEATHER



**CAMZIN MIX**

M 5-10, 11, 12 W 6-10, 11, 12

26153191 BLACK LEATHER

26153009 BLACK SUEDE METALLIC COMBI

26153006 DK TAUPE SUEDE METALLIC COMBI

26153008 MAHOGANY LEATHER

**26153987 DARK TAN LEOPARD SUEDE**



**CHEYN MADI**

M 5-10, 11, 12 W 6-10, 11, 12

26128930 BLACK LEATHER

**26128931 DARK BROWN LEATHER**

26146734 NAVY TUMBLED LEATHER

26129951 BLACK SCRUNCH LEATHER

26129952 DARK BROWN SCRUNCH LTHR



**CHEYN ZOE**

N 8-10, 11 M 5-10, 11, 12

W 6-10, 11, 12

26153011 BLACK LEATHER

**26153010 BURGUNDY LEATHER**

26154389 DARK BROWN LEATHER



**CORA DAHLIA**

N 7-10, 11, 12 M 5-10, 11, 12

W 6-10, 11, 12 XW 6-10, 11

**26154948 BLACK LEATHER/TEX COMBI**

26154953 BRONZE METALLIC

26154951 BLACK SYNTHETIC

26154952 NAVY COMBI



**CORA DAISY**

N 7-10, 11, 12 M 5-10, 11, 12

W 6-10, 11, 12 XW 6-10, 11

26154957 BLACK SYN CRINKLE PATENT

26154967 BLACK TEXTILE/LTHR COMBI

26155772 BLACK TUMBLED LEATHER

26154960 BRONZE METALLIC

**26155782 DARK BROWN TUMBLED LTHR**

26156330 NAVY TUMBLED LEATHER



**CORA POPPY**

N 7-10, 11, 12 M 5-10, 11, 12

W 6-10, 11, 12 XW 6-10, 11

26154981 BLACK TEXTILE/LTHR COMBI

**26156827 BLACK TUMBLED LEATHER**

26154986 BLUE TEXTILE/LTHR COMBI

26155784 BURGUNDY TEX/LTHR COMBI

26156819 DARK BROWN TUMBLED LTHR

26154984 NAVY TEXTILE/LTHR COMBI

26156824 NAVY TUMBLED

26154983 TAUPE BRONZE COMBI



**DIANE PEAKE**

M 5-10, 11, 12 W 6-10, 11

26152977 BLACK LEATHER/SUEDE COMBI

**26152974 MAHOGANY LTHR/SUEDE COMBI**



**DIANE PIONEER**

M 5-10, 11, 12 W 6-10, 11

**26152967 BLACK LEATHER**

26152968 TAN LEATHER

26152964 TAUPE LEATHER



**EMSLIE LULIN**

N 7-10, 11, 12 M 5-10, 11, 12

W 6-10, 11, 12

**26129221 BLACK LEATHER**



**EMSLIE WARREN**

N 7-10, 11, 12 M 5-10, 11, 12

W 6-10, 11, 12

26128442 BLACK LEATHER

**26128642 DARK BROWN LEATHER**

26128643 NAVY LEATHER



**HOPE HENLEY**

M 5-10, 11, 12 W 6-10, 11, 12

**26137185 BLACK LEATHER**



**HOPE ROXANNE**

N 7-10, 11, 12 M 5-10, 11, 12

W 6-10, 11, 12

26137200 BLACK LEATHER

26137201 BROWN LEATHER

26138342 DARK TAN LEATHER

**26137203 NAVY LEATHER**



**ILLEANA TULIP**

M 5-10, 11, 12 W 6-10, 11, 12

26153216 BLACK LEATHER

26153179 BLACK PATENT SYNTHETIC

26153182 DARK TAN LEOPARD SUEDE

**26153186 METALLIC LEATHER**

26153187 PRALINE PATENT SYNTHETIC



**JULIET LORA**

N 7-10, 11, 12 M 5-10, 11, 12

W 6-10, 11, 12

26136577 BLACK LEATHER

26136925 BLACK PATENT LEATHER

26151513 BLACK SYN CROC PRINT

**26151934 BURGUNDY SYN CROC PRINT**

26136578 NAVY LEATHER



**JULIET MONTE**

N 7-10, 11, 12 M 5-10, 11, 12

W 6-10, 11, 12

26136864 BLACK LEATHER/SYNTHETIC

**26154335 BLACK TWEED TEXTILE**



**LINVALA JERICA**

M 5-10, 11, 12 W 6-10, 11

26137208 BLACK LEATHER

26150771 BLACK CROC LEATHER

26150770 BURGUNDY CROC LEATHER

26150768 DARK TAN LEOPARD SUEDE

26150767 METALLIC LEATHER

26137211 NAVY LEATHER

26152294 PRALINE LEATHER

26154319 RED SUEDE

**26146450 TAUPE SNAKE TEXTILE**



**LINVALA SEA**

M 5-10, 11, 12 W 6-10, 11

26143924 BLACK LEATHER

26151952 BLACK SUEDE/CROC SYN COMBI

26153985 DARK TAN LEOPARD SUEDE

**26151481 BURGUNDY SUEDE/CROC SYN C**

26152776 TAUPE SNAKE SYNTHETIC



**MARILYN ABBY**

M 5-10, 11, 12 W 6-10, 11

**26153420 BLACK LEATHER**

26154393 BLACK SUEDE



**MARILYN BETH**

M 5-10, 11, 12 W 6-10, 11

26153410 BLACK LEATHER

26153412 BLACK SUEDE

**26153411 DARK TAN LEOPARD SUEDE**



**MARILYN SARA**

M 5-10, 11, 12 W 6-10, 11

26153413 BLACK LEATHER/SYN COMBI

26153418 BLACK TEXTILE/PATENT COMBI

26153415 DARK TAN LEOPARD SUEDE

**26154391 NAVY TEXTILE/PATENT COMBI**





---

**MAY MARIGOLD**

---

M 5-10, 11, 12 W 6-10, 11, 12

26062909 BLACK

**26122617 BLACK CROCO PATENT SYN**

---



---

**MAZY EASTHAM**

---

M 5-10, 11, 12 W 6-10, 11, 12

26153998 BLACK LEATHER

26154855 BLACK CRINKLE PATENT SYN

26156755 DARK TAN LEOPARD

**26154854 MAHOGANY LEATHER**

---



---

**MAZY SQUAM**

---

M 5-10, 11, 12 W 6-10, 11, 12

26153246 BLACK LEATHER INT COMBI

26153242 BURGUNDY LEATHER INT COMBI

**26154339 DARK TAN LEOPARD SUEDE COMBI**

26153243 NAVY LEATHER INTEREST COMBI

---



---

**RAISIE ARLIE**

---

M 5-10, 11, 12 W 6-10, 11, 12

**26144444 BLACK LEATHER/CROC COMBI**

---



---

**RAISIE BLOOM**

---

M 5-10, 11, 12 W 6-10, 11, 12

**26129031 BLACK LEATHER**

---



---

**SHARON DASHER**

---

M 5-10, 11, 12 W 6-10, 11, 12

26155812 BLACK SUEDE/DARK TAN WELT

26155810 BURGUNDY SUEDE/DK TAN WELT

26151386 DARK OLIVE SUEDE

26155811 GREY SUEDE/DARK TAN WELT

**26151385 METALLIC LEATHER**

---



---

**SHARON DOLLY**

---

M 5-10, 11, 12 W 6-10, 11, 12

26155819 BLACK SUEDE/DARK TAN WELT

**26151352 BLACK SYNTHETIC CROC PATENT**

26152594 BURGUNDY SYN CROC PATENT

26154331 DARK TAN LEOPARD PRT SUEDE

26155983 GREY SUEDE/DARK TAN WELT

26155987 NAVY SUEDE/DARK TAN WELT

---



---

**SHARON HEIGHTS**

---

M 5-10, 11, 12 W 6-10, 11, 12

26153517 BLACK SUEDE

26153520 GREY SUEDE

**26153518 TAUPE SUEDE**

---



---

**SHARON HOP**

---

M 5-10, 11, 12 W 6-10, 11, 12

26147121 BLACK LEATHER

26138707 BLACK SUEDE

**26138806 GREY SUEDE**

---



---

**SHARON NOEL**

---

M 5-10, 11, 12 W 6-10, 11, 12

---

26155990 BLACK LEATHER/DARK TAN WELT

---

26155815 BLACK SUEDE/DARK TAN WELT

---

**26136363 BURGUNDY NUBUCK**

---



---

**TRISH ROSE**

---

M 5-10, 11, 12 W 6-10, 11, 12

---

26153289 BLACK LEATHER

---

26153290 BLACK LIZARD PRINT LEATHER

---

26155839 BLACK SUEDE

---

26155838 BLACK TEX/LEATHER COMBI

---

26153303 BURGUNDY LIZARD PRNT LTHR

---

26153306 MAHOGANY SUEDE

---

**26153997 METALLIC LEATHER**

---

26153310 ROSE SUEDE

---

26153281 DARK TAN LEOPARD PRNT SUEDE

---



---

**VERONA TRISH**

---

M 5-10, 11, 12 W 6-10, 11

---

26137241 BLACK LEATHER

---

26137244 DARK TAN LEATHER

---

**26137333 TAUPE LEATHER**

---



CLOUDSTEPPERS  
BY  
*Clarks*



**ADELLA HOLLY**

N 7-10, 11, 12 M 5-10, 11, 12

W 6-10, 11, 12

26153424 BLACK TEXTILE

26154330 BURGUNDY TEXTILE

26153425 NAVY TEXTILE

**26153423 STONE TEXTILE**



**AYLA LOW**

M 5-10, 11, 12 W 6-10, 11, 12

26152781 BLACK SNAKE PRINT SYN

26137787 BLACK SYNTHETIC NUBUCK

26155467 DARK PEWTER SYNTHETIC

26137786 NAVY SYNTHETIC NUBUCK

26154291 RED TEXTILE

26154290 TAUPE SNAKE PRINT SYNTHETIC

**26152786 BURGUNDY SNAKE PRINT SYN**



**AYLA RIVER**

M 5-10, 11, 12 W 6-10, 11, 12

**26154324 BLACK/TAN INTEREST SYN**

26152663 BLACK SNAKE PRINT SYN

26152661 NAVY SNAKE PRINT SYNTHETIC



**SILLIAN2.0 EVE**

M 5-10, 11, 12 W 6-10, 11, 12

**26151895 BLACK SYNTHETIC**

26151898 BLACK SYNTHETIC COMBI

26151897 BURGUNDY SYNTHETIC COMBI

26151896 DARK PEWTER SYN COMBI

26151899 NAVY SYNTHETIC COMBI



**SILLIAN2.0 JOY**

M 5-10, 11, 12 W 6-10, 11, 12

26152662 BLACK SYNTHETIC

**26152659 GREY SYNTHETIC**

26151948 NAVY SYNTHETIC



**SILLIAN2.0 MOON**

M 5-10, 11, 12 W 6-10, 11, 12

26148535 BLACK SYNTHETIC

**26148538 NAVY SYNTHETIC**



**SILLIAN2.0 OPAC**

M 5-10, 11, 12 W 6-10, 11, 12

26146199 BLACK SYNTHETIC NUBUCK

**26152701 DARK PEWTER SYNTHETIC**



**SILLIAN2.0 RISE**

M 5-10, 11, 12 W 6-10, 11, 12

26151950 BLACK SYNTHETIC

**26151949 BURGUNDY SYNTHETIC**

26151960 DARK PEWTER SYNTHETIC

26151945 NAVY SYNTHETIC





---

**STEP ALLENABAY**

---

M 5-10, 11, 12 W 6-10, 11, 12

---

**26134182 BLACK HEATHERED FABRIC**

---

26134181 GREY HEATHERED FABRIC

---





C&J CLARK

C&J CLARK

C&J CLARK

C&J CLARK

BYKELLAR @YELING SHO

BYKELLAR @YELING SHO

BYKELLAR @YELING SHO

BYKELLAR @YELING SHO

TOP TOP

TOP TOP

CLARK

CLARK



**FROM RADICAL  
ROOTS.  
ORIGINALS GROW.**

**THEN. NOW. ALWAYS**





**AW20  
MENS  
COLLECTION**



**ATTICUS LACE**

M 7-12, 13 W 8-12, 13

26136155 BLACK LEATHER

26151308 DARK BROWN NUBUCK

**26152088 NAVY SUEDE**

26131824 TAN LEATHER



**ATTICUS LIMIT**

M 7-12, 13

26152089 MUSHROOM SUEDE

**26136740 TAN LEATHER**



**CHANTRY MONK**

M 7-12, 13 W 8-12, 13

26155066 BLACK SUEDE

**26155067 TOBACCO SUEDE**



**CHANTRY WALK**

M 7-12, 13 W 8-12, 13

26155071 BLACK LEATHER

26155069 DARK GREY SUEDE

**26155070 DARK TAN LEATHER**

26155072 TOBACCO SUEDE



**CHANTRY WING**

M 7-12, 13 W 8-12, 13

**26155076 BLACK LEATHER**

26155074 DARK TAN LEATHER

26155073 NAVY SUEDE



**CITISTRIDELACE**

M 7-12, 13

26153361 BLACK COMBI

26153367 DARK BROWN

**26153371 TAN COMBI**



**CITISTRIDEMONK**

M 7-12, 13

**26155162 BLACK COMBI**

26155160 DARK BROWN SUEDE

26155161 TAN COMBI



**CLARKDALE DBT**

M 7-12, 13 W 7-12, 13

26154210 BEESWAX LEATHER

26152742 BLACK SUEDE

26152743 DARK BROWN SUEDE

**26152741 TAUPE SUEDE**



---

**CLARKDALE GOBI**

M 7-12, 13

---

26154211 BEESWAX LEATHER

---

26127791 DARK BROWN SUEDE

---

26154296 DARK OLIVE SUEDE

---

26154617 DARK SAND SUEDE

---

26154209 NAVY SUEDE

---

**26154616 TOBACCO SUEDE**

---

26144704 TAUPE SUEDE

---



---

**CLARKDALE HI**

M 7-12, 13

---

26152158 BLACK LEATHER

---

**26153884 TAN LEATHER**

---

26154573 TAUPE LEATHER

---



---

**DESERT BOOT 2**

M 7-12, 13, 14, 15 W 7-12, 13

---

26155498 BEESWAX LEATHER

---

26155499 BLACK SUEDE

---

26155506 DARK BROWN SUEDE

---

**26155495 SAND SUEDE**

---



---

**DESERT BOOT 2**

M 7-12, 13

---

26155497 BLACK WARMLINED LEATHER

---

26155509 BROWN LEATHER

---

**26155508 DARK OLIVE SUEDE**

---

26155505 DARK TAN SUEDE

---

26155501 TAN WARMLINED LEATHER

---



---

**FOXWELL LIMIT**

M 7-12, 13

---

**26154212 BLACK SUEDE**

---

26152476 DARK SAND SUEDE

---

26152526 MUSHROOM SUEDE

---



---

**FOXWELL TOP**

M 7-12, 13

---

**26148011 BEESWAX LEATHER**

---



---

**HERO LITE LACE**

M 7-12, 13

---

26154878 BLACK LEATHER

---

**26154879 BLACK HI SHINE LEATHER**

---

26154881 BLUE SUEDE

---

26154884 BROWN LEATHER

---

26154882 DARK OLIVE SUEDE

---

26154880 GUN METAL GREY

---

26155312 NAVY SUEDE

---

26154877 OCHRE SUEDE

---

26154883 RED SUEDE

---

26154876 WHITE LEATHER

---



---

**STOCKLAND HI**

M 7-12, 13

---

**26154923 DARK TAN LEATHER**

---

# CLARKS ORIGINALS




---

## DESERT BOOT

M 7-12, 13

26155484 BEESWAX LEATHER

26155480 BLACK SUEDE

26155485 BROWN SUEDE

26154725 DEEP PURPLE SUEDE

26154730 GINGER SUEDE

26154727 NUTMET SUEDE

26154726 PALE OLIVE SUEDE

26154729 RUST BROWN SUEDE

26155527 SAND SUEDE

**26155482 SLATE GREY SUEDE**

---




---

## DESERT TREK

M 7-12, 13

26155487 BEESWAX LEATHER

26155486 BLACK SUEDE

26155488 DARK BROWN

26154738 BLUE GREY COMBI

**26154752 OLIVE COMBI**

---




---

## WALLABEE

M 7-12, 13

26155519 BLACK SUEDE

26154744 INK SUEDE

26155399 KHAKI SUEDE

26155515 MAPLE SUEDE

26151270 PURPLE COMBI SUEDE

26151267 RED COMBI SUEDE

**26154742 YELLOW SUEDE**

---




---

## WALLABEE BOOT

M 7-12, 13

26155513 BEESWAX LEATHER

26155512 BLACK LEATHER

26155517 BLACK SUEDE

26155516 MAPLE SUEDE

26155048 NAVY HAIRY SUEDE

26154818 TAN HAIRY SUEDE

26154745 RED SUEDE

**26154739 TEAL SUEDE**

---



# Clarks unstructured




---

## BANNING HIGTX

M 7-12, 13

26151909 BLACK LEATHER

**26151907 MAHOGANY LEATHER**

---




---

## BANNING LIMIT

M 7-12, 13, 14, 15 W 8-12

**26151754 DK BROWN TUMBLED NUBUCK**

26152025 DARK OLIVE NUBUCK

26151752 TAN TUMBLED NUBUCK

---




---

## BANNING PLAIN

M 7-12, 13, 14, 15 W 8-12

26152027 DK BROWN TUMBLED NUBUCK

**26151719 NAVY TUMBLED NUBUCK**

26151750 TAN TUMBLED NUBUCKI

---




---

## COPLIN FLOW

M 7-12, 13

26152497 BLACK NUBUCK/LTHR COMBI

26152499 GREY NUBUCK/LTHR COMBI

**26152811 NAVY NUBUCK/GREY LTHR COMBI**

26152498 OLIVE/GREY NUBUCK COMBI

---




---

## UN BRAWLEY UP

M 7-12, 13, 14

**26151780 BLACK TUMBLED LEATHER**

26151783 MAHOGANY TUMBLED LEATHER

---




---

## UN BRAWLEYLACE

M 7-12, 13, 14, 15 W 8-12 13, 14, 15

XW 8-12, 13

26151336 BLACK TUMBLED LEATHER

**26151789 MAHOGANY TUMBLED LEATHER**

---




---

## UN BRAWLEYPACE

M 7-12, 13, 14, 15 W 8-12 13, 14, 15

XW 8-12, 13

**26151781 BLACK TUMBLED LEATHER**

26151782 MAHOGANY TUMBLED LEATHER

---




---

## UN BRAWLEYPACE

M 7-12, 13, 14, 15 W 8-12 13, 14, 15

XW 8-12, 13

**26151788 BLACK TUMBLED LEATHER**

26151784 MAHOGANY TUMBLED LEATHER

---



---

**UN COSTA TIE**

---

M 7-12, 13 W 8-12, 13

---

26153867 BLACK LEATHER

---

**26153866 BRITISH TAN LEATHER**

---

26153865 DARK OLIVE LEATHER



---

**UN TAILOR CAP**

---

M 7-12, 13 W 8-12, 13

---

**26144676 BLACK LEATHER**

---

26146126 TAN LEATHER



---

**UN TAILOR MID**

---

M 7-12, 13 W 8-12, 13

---

26144677 BLACK LEATHER

---

**26144678 TAN LEATHER**

---



---

**UN TAILOR TIE**

---

M 7-12, 13 W 8-12, 13

---

**26145441 BLACK LEATHER**

---

26144680 TAN LEATHER



---

**UN TRAIL APRON**

---

M 7-12, 13 W 8-12, 13

---

26151966 BLACK OILY LEATHER

---

26151943 MAHOGANY OILY LEATHER

---

**26152813 TAN NUBUCK**



---

**UNKENNETH WAY**

---

M 7-12, 13, 14, 15 W 8-12, 13

---

**26128044 BLACK LEATHER**

---

26128045 BROWN LEATHER



---

**UNSHERIDAN GO**

---

M 7-12, 13, 14, 15 W 8-12, 13

---

26128694 BLACK LEATHER

---

**26128692 BROWN LEATHER**



---

**WAVE2.0 EDGE**

---

M 7-12, 13, 14, 15 W 8-12, 13

---

26155106 BLACK TUMBLED LEATHER

---

26155109 BROWN OILY TUMBLED LTHR

---

**26155108 SAGE OILY TUMBLED LEATHER**



---

**WAVE2.0 GO**

---

M 7-12, 13

---

**26152844 BLK NUBU/DK GREY TEX COMBI**

---

26152840 TAN NUBUCK/DK OLIVE TEX



---

**WAVE2.0 VIBE**

---

M 7-12, 13, 14 W 8-12, 13

---

26155110 BLACK TUMBLED LEATHER

---

26155111 BROWN OILY TUMBLED LTHR

---

**26151636 DARK GREY NUBUCK**

---

26151979 SAGE NUBUCK

---

collection  
BY  
*Clarks*




---

**BRADLEY STEP**

---

M 7-12, 13, 14, 15 W 7-12, 13

---

26153157 BLACK TUMBLED LEATHER

---

**26153159 BROWN TUMBLED LEATHER**

---




---

**BRADLEY WALK**

---

M 7-12, 13, 14, 15 W 7-12, 13

---

**26153332 BLACK TUMBLED LEATHER**

---

26153326 BROWN TUMBLED LEATHER

---




---

**BRANTIN CAP**

---

M 7-12, 13

---

**26155718 BLACK LEATHER**

---

26155719 DARK TAN LEATHER

---




---

**BRANTIN LOW**

---

M 7-12, 13

---

26155734 BLACK LEATHER

---

**26155732 DARK TAN LEATHER**

---

26155733 NAVY NUBUCK

---




---

**BRAXIN HIGH**

---

M 7-12, 13

---

**26155724 BEESWAX COMBI**

---




---

**BRAXIN LO**

---

M 7-12, 13

---

**26155721 BEESWAX COMBI**

---

26155722 BLACK COMBI

---




---

**GROVE EDGE**

---

M 7-12, 13, 14, 15

---

26155028 BLACK LEATHER

---

**26155030 BROWN LEATHER**

---




---

**GROVE STEP**

---

M 7-12, 13, 14, 15

---

**26153323 BLACK LEATHER**

---

26153548 BROWN LEATHER

---

26156253 SAND WAXY SUEDE

---





---

**GROVE UP**

---

M 7-12, 13, 14, 15

---

**26153345 BROWN LEATHER**

---



---

**KEMPTON FREE**

---

M 7-12, 13, 14, 15 W 7-12, 13

---

**26147039 BLACK LEATHER**

---

26150735 DARK BROWN LEATHER

---

26147038 TAN LEATHER

---



---

**KEMPTON LACE**

---

M 7-12, 13, 14, 15 W 7-12, 13

---

2615336 BLACK LEATHER

---

**26154390 DARK BROWN LEATHER**

---



---

**KEMPTON RUN**

---

M 7-12, 13, 14, 15 W 7-12, 13

---

26145477 BLACK LEATHER

---

**26145479 TAN LEATHER**

---



---

**PAULSON MID**

---

M 7-12, 13

---

**26144819 BLACK LEATHER**

---

26151969 DARK BROWN SUEDE

---

26144781 MAHOGANY LEATHER

---



---

**PAULSON UP**

---

M 7-12, 13

---

26152275 BEESWAX LEATHER

---

26144798 BLACK LEATHER

---

26150730 DARK BROWN LEATHER

---

26147142 DARK TAN SUEDE

---

**26148665 OLIVE SUEDE**

---



---

**WHIDDON CAP**

---

M 7-12, 13, 14, 15 W 7-12, 13

---

26152912 BLACK LEATHER

---

**26152913 DARK TAN LEATHER**

---



---

**WHIDDON PACE**

---

M 7-12, 13, 14, 15 W 7-12, 13

---

**26152909 BLACK LEATHER**

---

26152908 DARK TAN LEATHER

---



---

**WHIDDON PLAIN**

---

M 7-12, 13, 14, 15 W 7-12, 13

---

**26152918 BLACK LEATHER**

---

26152919 DARK TAN LEATHER

---



---

**WHIDDON STEP**

M 7-12, 13, 14, 15 W 7-12, 13

---

26152916 BLACK LEATHER

---

**26152917 DARK TAN LEATHER**

---



---

**WHIDDON ZIP**

M 7-12, 13, 14, 15

---

**26155039 BLACK LEATHER**

---

# BOSTONIAN COMMONWEALTH




---

## BOLTON FREE

M 7-12, 13, 14, 15 W 8-12, 13

26130064 BLACK LEATHER

**26130506 BROWN LEATHER**

26148295 TAN LEATHER

---




---

## DEZMIN CAP

M 7-12, 13

2152368 BLACK

**26152568 TAN**

---




---

## DEZMIN MID

M 7-12, 13

**26149670 GREY NUBUCK**

---




---

## DEZMIN PLAIN

M 7-12, 13

26133405 BLACK LEATHER

26144522 DARK TAN TUMBLE

26134165 BROWN LEATHER

**26150460 DARK NAVY**

---




---

## IPSWICH APRON

M 7-12, 13, 14, 15 W 8-12, 13

**26130507 BLACK LEATHER**

26130065 BROWN LEATHER

---




---

## WENHAM CAP

M 7-12, 13, 14, 15 W 8-12, 13

**26130510 BLACK LEATHER**

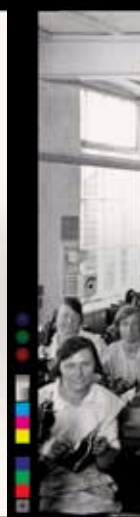
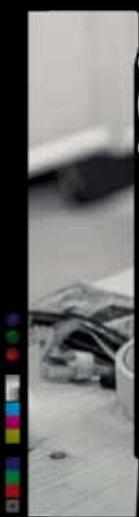
26130511 BROWN LEATHER

26148309 TAN LEATHER

---

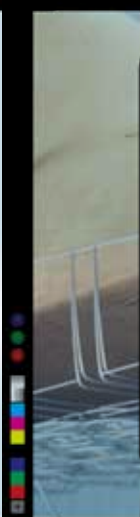






**Clarks**  
Air-cushioned?  
Naturally

Cityveldt



**Step out of line.**

There's nothing that's really different, it's a pair of Clarks Polyveldt shoes, new fabric last design.

It's a completely new type of shoe construction with innovative webbing that's lighter and more flexible than the traditional last. It's a completely new type of shoe construction with innovative webbing that's lighter and more flexible than the traditional last.

Clarks Polyveldt shoes for men.

Introducing Clarks **POLYVELDT**

IN TIMES LIKE THESE WHEN POLYVELDT IS BEING TESTED

Clarks

Introducing Clarks **POLYVELDT**

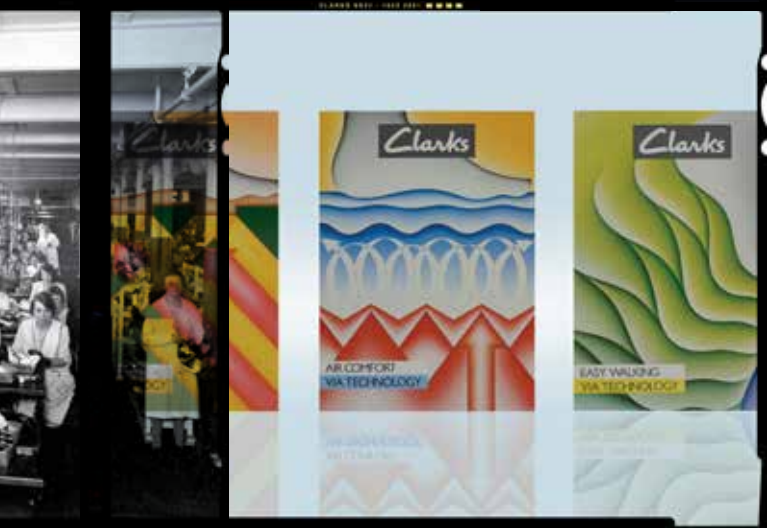
IN TIMES LIKE THESE WHEN POLYVELDT IS BEING TESTED

Clarks

**NO OTHER AIR LINE CRUISES AT OUR SPEED**

Clarks

THE WORLD'S MOST COMFORTABLE AIR LINE



# CRAFT AND INNOVATION.

THEN. NOW. ALWAYS

# TECHNOLOGIES



The original air technology designed by Clarks. Under foot pods fill with air and cushion the foot in movement while a cushioned footbed circulates natural airflow with each step for maximum breathability.



The GORE-TEX® lining is breathable, waterproof, and engineered to keep feet dry and comfortable all season long. Keeps water out while allowing the foot to breath for a more comfortable interior environment.



Featuring seam sealing, waterproof leathers, laces and threads.



A sculpted rocker sole unlocks a wave of momentum to boost natural walking motion, absorb shock and spread pressure and weight, enabling you to walk comfortably for longer.



100% waterproof and breathable, our innovative membrane and non-moisture wicking materials keep feet dry and comfortable. Advanced linings enable warm air to evaporate away from the foot for climate-controlled comfort.



ACS draws in cool air at every step, so you can stay active in comfort. Carefully placed vents complement breathable linings and mesh keeping feet fresh and comfortable all day long.



Different densities of foam deliver comfort, all day, everyday with softness you can feel from your first step. Long lasting comfort and fit with minimal compression. Optimal breathability via open-cell technology.



Triple-density OrthoLite® footbed delivers specialized cushioning solutions for different pressure points and balanced cushioning to stabilize the foot, allowing you to walk with ease. Long lasting impact absorption with every step.



Cushioning thanks to a single density foam layer. Texture Pods add underfoot comfort. Heel padding absorbs impact.



Ultralite OrthoLite® Footbed delivers extreme comfort. A molded cup wraps around the foot to offer more heel support, and enhanced cushioning where the heel strikes. Breathable tech wick lining keeps feet fresh, and a soft EVA strobil layer adds lightweight cushioning.

## TERMS & CONDITIONS

**CANADA — FREIGHT:** F.O.B. Etobicoke, ON. Customers who do not specify routing instructions will have shipments routed via our default method. Terms: Net 30 days (Net 45 days West Coast). A finance charge of 1.5% per month (18% annum) or the highest rate allowed by law will be charged on any invoice, which is not paid within the stated terms. **ORDER CANCELLATION POLICY:** Any cancellation request must be communicated in writing 30 days prior to requested ship date. **RETURN GOODS POLICY:** Clarks shoes are warranted against defects in material or workmanship under normal wearing conditions. ALL merchandise returns require a RETURN AUTHORIZATION (RA). For up to 12 pairs you can obtain an RA by calling our Customer Service Department, for returns over 12 pairs, please contact your Territory Sales Manager. Unauthorized returns will be subject to refusal. Your authorized return will include an RA#, style number, style name, quantity to be returned and authorized return price. **RETURN FREIGHT MUST BE PREPAID BY THE RETAILER.** Authorized returns require Clarks return labels in order to expedite processing. Labels are sent immediately upon authorization. For additional labels, please contact Customer Service. Please do not co-mingle returns, each return requires a separate RA for each brand. Credit will not be issued for first quality shoes that are shopworn, creased, stickered or otherwise damaged by the customer; nor for worn shoes that are determined to have no material or manufacturing defect (No Credit Shoes). Shoes deemed "No Credit" will not be returned and will be disposed of by our Return Center unless otherwise notified in writing at the time of the return. Any shoe returned for defective reasons will be credited at the last original invoiced price. All orders are subject to Clarks' Terms and Conditions of Sale, which can be found at [www.cnaone.com](http://www.cnaone.com).

**RETURN MERCHANDISE TO** (Returns to any other address will be refused):

Clarks Americas, Inc., Returned Goods Department, 2881 Brighton Road, Oakville, ON, L6H 6C9

## CONTACT

### CLARKS AMERICAS, INC.

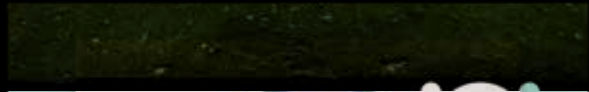
Attn: Customer Service Dept.  
2881 Brighton Road, Oakville, ON, L6H 6C9  
T. 800.563.1825 F. 888.563.1839



Clarks is excited to let you know that the paper used in this catalog meets Forest Stewardship Council's (FSC) certification standards for responsible forest management.

ACS®, Active Air®, Artisan Collection®, Bendables®, Clarks®, Clarks Artisan®, Clarks Originals®, Desert®, Desert® Boot, Flexlite®, Natureveldt®, Originals®, Soleassage®, Trek®, Unstructured®, Wallabee®, Wave®, and Wavewalk® are registered trademarks of C&J Clark International, LTD





**CLARKS**  
**TOR**  
**SHOES**  
DYED TO MATCH ANY FROCK





Clarks®

PIONEERING SHOEMAKERS SINCE 1825