

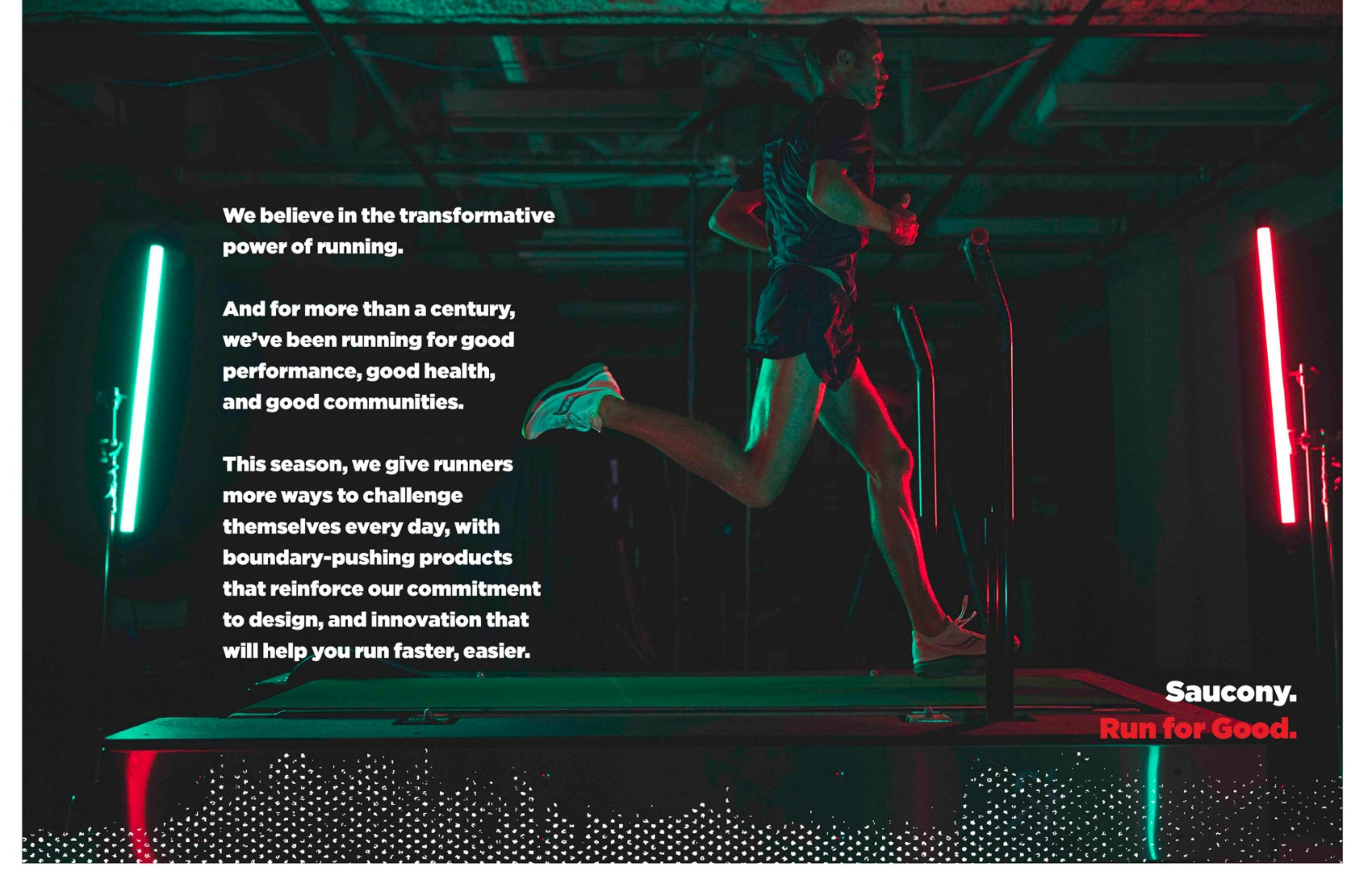
saucony

The Saucony logo graphic is a white, stylized, wave-like shape that curves upwards from left to right. It features three small, solid blue circles arranged in a slightly curved line along its upper edge.

Footwear: Canada

Fall 2020

saucony | run for good



**We believe in the transformative
power of running.**

**And for more than a century,
we've been running for good
performance, good health,
and good communities.**

**This season, we give runners
more ways to challenge
themselves every day, with
boundary-pushing products
that reinforce our commitment
to design, and innovation that
will help you run faster, easier.**

Saucony.
Run for Good.



PWRRUN^{PB}

**Feels like having everything
and nothing at all**

For those looking for a performance advantage, PWRRUN^{PB} eliminates compromises in running cushioning, providing impact-resistance that is lighter and more durable with a superior rebound than its TPU-based counterparts. The result is a significant improvement in running economy, meaning runners go faster and farther than ever before.



PWRRUN+

Feels like the best spring-loaded cloud

For those looking to put the best cushioning between them and the road, PWRRUN+ is the next generation of continuous cushioning, firing on all 6 cylinders to give you a luxurious underfoot feel that won't break down—now 25% lighter than our previous best.



PWRRUN

Feels like an upgrade to your smooth ride

For those looking for cushioning they can count on for feel-good runs, new PWRRUN provides just-right softness that's responsive enough to tackle as many miles as you wish.



VERSARUN

Feels like the beginning of good runs

For those looking for essential cushioning to keep them comfortable, VERSARUN all the fundamentals right to keep you moving with a responsiveness that stays true to our performance legacy.



Fast favours the bold.

Unburdened from the constraints of the conventional color palette, the Mutant Collection forcefully separates itself from the pack. Invigorated, innovative and anything but ordinary.

Introducing the Endorphin Collection

Let the good runs roll.

**Engineered with professional athletes.
Built for everyday runners.**

The Endorphin Collection is a revolutionary new family of shoes engineered with Saucony's pro athletes, and built for everyday runners. In testing and perfecting the shoes with elite runners, we've uncovered how they generate speed with minimal energy loss, and created shoes that bring those benefits to life for everyone to run in.

Speed

Whether you're training or racing, an ultralight composite plate and new PWRRUN[®] cushioning combine to propel you to faster, feel-good runs. If it feels like the shoe is working for you, it's because it is.

Pro

You bring your all to every run. Your shoes should too. The Endorphin Pro was engineered with our pro athletes to shave time and stack wins. New, lighter than ever PWRRUN[®] cushioning and a carbon fiber plate propel you forward in record time.

Shift

Running should feel good, from mind to toe. Treat your body to the Endorphin Shift. Our momentum-building design creates a rolling feel underfoot, comfortably propelling you to new distances, while PWRRUN cushioning provides unbelievable softness.

Road Running

In pursuit of always moving forward.

For we who run to make life better, Saucony Road Shoes empower us to reach our goals with beautifully-designed innovations tested to deliver the best in quality, feel, fit, and function.

Difference you can feel.

Every advancement made is in the pursuit to improve how running feels. More than the sum of its parts, each shoe is engineered to ensure runners feel lighter, faster, and more empowered to achieve their goals now than in the pair before.

Runners rule.

If it doesn't work for you, it doesn't work for us. Every shoe goes through rigorous prototyping and testing to deliver on the highest standards of quality and design. It's what has made us a trusted brand in running for 121 years.

Holistic approach to fit.

The fit of each shoe adapts to the uniqueness of each foot for unparalleled, long-lasting comfort by taking a 360° approach to both upper and underfoot design and construction.

12	Endorphin Pro	30	Guide 13
14	Endorphin Speed	32	Ride 13
16	Endorphin Shift	34	Kinvara 11
18	Hurricane 22	36	Jazz 22
20	Liberty ISO 2	38	Clarion 2
22	Freedom 3	40	Cohesion 13
24	Triumph 18	42	Cohesion Sport
26	Omni 19	44	Stretch & Go Glide
28	Echelon 8		

New

Endorphin^{Pro}

The fastest route to a winning time.

For athletes looking for a performance advantage over the competition, the carbon-plated Endorphin Pro makes magic happen on race day by rewriting what the fastest times should feel like.



Category: **Neutral**

Offset: **8mm (35.5/27.5)**

Weight: **Men 7.5oz (213g) | Women 6.3oz (179g)**

Sizes: **Men 7-13, 14, 15 | Women 5-12**

Available: **6/1/20**

SRP: **\$249.95**



Fastest to the finish

New ultralight PeBa*-based PWRRUN PB cushioning and a full-length carbon fiber plate takes energy efficiency to new heights. The reduction in fatigue means running at top speed feels easier, so you get to the finish line faster.



Roll to a new PR

The SPEEDROLL, an always-forward geometry, creates a lively rolling feel underfoot. It's a propulsive ride that's unique to Saucony—feeling instantly responsive and natural at the same time.



Race-day light

Inspired by track spikes, the FORMFIT of this shoe uses hyperlight, ultra-thin engineered materials to ensure you have only what you need to be at your best.

Men



White Mutant
S20598-10 (M)

Women



White Mutant
S10598-10 (M)

New

EndorphinSpeed

Getting faster made easier.

For athletes looking for a performance advantage on every run, the Endorphin Speed makes running fast feel easier by proving that a cushioned shoe can deliver speed and a natural feel at the same time.



Category: **Neutral**
Offset: **8mm (35.5/27.5)**
Weight: **Men 8.0oz (227g) | Women 6.8oz (192g)**
Sizes: **Men 7-13, 14, 15 | Women 5-12**
Available: **7/1/20 (Mutant), 8/1/20 (Black / Gold)**
SRP: **\$199.95**



Energy for forever fast

New ultralight PeBa*-based PWRRUN PB cushioning takes energy efficiency to new heights. The reduction in fatigue means running at top speed feels easier, so you get to the finish line faster.



Rolling in speed

The SPEEDROLL, an always-forward geometry, creates a lively rolling feel underfoot. It's a propulsive ride that's unique to Saucony—feeling instantly responsive and natural at the same time.



Light but loaded comfort

FORMFIT ensures a locked-in fit that's light on foot with breathable engineered mesh and 3D-printed structure where needed most.

Men



White Mutant
S20597-10 (M)



Black / Gold
S20597-40 (M)

Women



White Mutant
S10597-10 (M)



Black / Gold
S10597-40 (M)

New

Endorphin^{Shift}

A whole new feel for easy-going runs.

For those looking to give their body a break, the Endorphin Shift takes a new approach to make any run feel easier by reducing the stress on the feet and treating them to lots of feel-good cushioning.



Category: **Structured Cushioning**
Offset: **4mm (38/34)**
Weight: **Men 9.9oz (280g) | Women 9.5oz (269g)**
Sizes: **Men 7-13, 14, 15 | Women 5-12**
Available: **7/1/20**
SRP: **\$179.95**



Feels refreshingly plush

More PWRRUN cushioning underfoot provides just-right softness that feels forgiving without feeling squishy.



Let the good times roll

The SPEEDROLL, an always-forward geometry, creates a lively rolling feel underfoot. It's a propulsive ride that's unique to Saucony—feeling instantly responsive and natural at the same time.



Structured for comfort

A TPU heel counter works in unison with the medial rubber wrap to create structural support in a lightweight form to adapt to a variety of foot types.

Men



White Mutant
S20577-10 (M)



Indigo
S20577-20 (M)



Black / White
S20577-40 (M)

Women



White Mutant
S10577-10 (M)



Dusk / Gold
S10577-20 (M)



Black / White
S10577-40 (M)

Hurricane²²

Soft and supportive for the long run, now lighter.

For those who need support and want lots of resilient cushioning, the Hurricane 22 is our most cushioned stability shoe, providing plenty of energy to keep you bouncing back for more—now lighter than before.



Category: **Structured Cushioning**

Offset: **8mm (33.5/25.5)**

Weight: **Men 11.7oz (335g) | Women 10.2oz (290g)**

Sizes: **Men 7-13, 14, 15 | Women 5-12**

New Colors: **7/1/20**

SRP: **\$194.95**



Feels like a springy cloud

PWRUN+, the next generation of amazing cushioning, gives you a luxurious underfoot feel that won't break down—now 25% lighter than before.



Supportive momentum

The new medial TPU guidance frame guides each step and enhanced toe spring gives every step an extra push forward to keep you going strong and feeling fresh.



Luxurious fit

FORMFIT acts like a luxurious bucket seat for your foot, conforming to you for the perfect fit and providing comfort from every angle.

Men



Charcoal / Red
S20544-30 (M)



Black / White
S20544-40 (M)



Grey / Black
S20544-25 (M)
S20545-25 (W)

Women



Dusk / Berry
S10544-20 (M)



Black / White
S10544-40 (M)



Blue / Aqua
S10544-25 (M)
S10545-25 (W)



Liberty ISO²

A jolt of energy with a supportive edge.

For those looking to achieve their personal goals, Liberty ISO 2 lets one boldly chase after them with a light and springy feel that has a touch of stealth stability to keep you comfortable as the miles rack up.



Category: **Structured Cushioning**
Offset: **4mm (26.5/22.5)**
Weight: **Men 9.9oz (287g) | Women 8.9oz (252g)**
Sizes: **Men 7-13, 14, 15 | Women 5-12**
New Colors: **6/1/20**
SRP: **\$209.95**



Built for energy return

Built to engage your natural energy return system, EVERUN gives this shoe a boost by comfortably dispersing impact and delivering springy push-offs.



Stealthy stability

The medial TPU guidance frame and reinforced TRI-FLEX outsole subtly counter excess motion to keep each step quick and comfortable.



Secure fit

FORMFIT with reinforced zones to ensure a secure fit without heavy bulk.

Men



Indigo / Black
S20510-20 (M)



Black / Blue
S20510-1 (M)

Women



Dusk / Berry
S10510-20 (M)



Blue / Navy
S10510-1 (M)

Freedom³

A fun, springy feel that knows no limits.

For those looking to achieve their personal goals, the lightweight Freedom 3 lets you boldly chase them daily with runs that feel fun, fast, and responsive with nothing to hold you back.



Category: **Neutral**

Offset: **4mm (27.5/23.5)**

Weight: **Men 8.4oz (239g) | Women 7.8oz (222g)**

Sizes: **Men 7-13, 14, 15 | Women 5-12**

New Colors: **6/1/20**

SRP: **\$199.95**



Feels light and springy

PWRRUN+, the next generation of amazing cushioning, is 25% lighter so you feel even more spring from each step.



Nimble and quick

A low profile stance with lots of ground grip and natural flexibility lets you instinctively react throughout your run.



Fits like a second sock

The FORMFIT mesh upper stretches and adapts for the ultimate light and unrestrained feeling.

Men



Moonrock / Red
S20543-30 (M)



Black / White
S20543-40 (M)



Grey / Blue
S20543-25 (M)

Women



Blush / Berry
S10543-20 (M)



Sky / Alloy
S10543-30 (M)



Black / White
S10543-40 (M)

New

Triumph¹⁸

Long runs get a faster, first-class upgrade.

For those who crave the ultimate in protective cushioning, the Triumph 18, our most cushioned shoe, has been retooled to give long runs a new faster feel with all the luxurious comfort you desire.



Category: **Neutral**

Offset: **8mm (32.5/24.5)**

Weight: **Men 11.1oz (315g) | Women 9.7oz (275g)**

Sizes: **Men 7-13, 14, 15 | Women 5-12**

Available: **6/1/20**

SRP: **\$194.95**



More springy-cloud feeling

PWRRUN+, the next generation of amazing cushioning, gives you a luxurious underfoot feel that won't break down—now 25% lighter than before.



Soft with more snap

New midsole geometries coupled with a new, durable rubber outsole make the cushy ride of this shoe feel faster.



More luxury on foot

FORMFIT acts like a luxurious bucket seat for your foot, with even softer materials than ever before.

Men



Red Mutant
S20595-10 (M)

Alloy / Red
S20595-30 (M)

Charcoal / White
S20595-40 (M)
S20596-40 (W)

Women



Dusk / Gold
S10595-20 (M)

Moonrock / Coral
S10595-30 (M)

Charcoal / Sky
S10595-40 (M)
S10596-40 (W)



New

Omni¹⁹

Streamlined support with surprising spring.

For those who need support, the Omni 19 delivers miles of comfortable running with added stability, a generous fit, and more spring than you'd expect from a shoe this supportive.



Category: **Stability**

Offset: **8mm (34/26)**

Weight: **Men 11.4oz (323g) | Women 9.8oz (278g)**

Sizes: **Men 7-13, 14, 15 | Women 5-12**

Available: **6/1/20**

SRP: **\$179.95**



More feel-good cushioning

New PWRRUN cushioning provides just-right softness and a more responsive feel than you'd expect from a shoe this supportive. Tackle as many miles as you wish.



Feels comfortably stable

The extended medial post in the midsole complements the wide platform to promote proper body alignment with each step. Plus, a new TPU frame wraps around the heel for enhanced control.



An upgraded fit

The FORMFIT construction utilizes new materials to achieve a comfortable and secure feel with a modern, streamlined appearance.

Men



Alloy / Brick
S20570-30 (M)
S20571-30 (W)



Black / White
S20570-40 (M)

Women



Dusk / Berry
S10570-20 (M)



Alloy / Sky
S10570-30 (M)
S10571-30 (W)



New

Echelon⁸

A feel-good ride that accommodates all who run.

For those who need a protective shoe that meets a wide-range of needs, the generous and accommodating Echelon 8 welcomes them with feel-good cushioning, a balanced and stable ride, and a secure fit.



Category: **Neutral**

Offset: **8mm (35/27)**

Weight: **Men 12.5oz (354g) | Women 10.8oz (309g)**

Sizes: **Men 7-13, 14, 15 | Women 5-12**

Available: **6/1/20**

SRP: **\$159.95**



More feel-good cushioning

New PWRRUN cushioning provides just-right softness and a more responsive feel for endless miles of comfort.



Stable as ever

The shoe's solid foundation feels even more stable thanks to a new lightweight midfoot support panel.



Generous and secure fit

Those with orthotics, or flat and voluminous feet find comfort in the spacious FORMFIT construction, made even more secure with a new 3D heel counter.

Men



Alloy / Black
S20574-30 (M)
S20575-30 (W)



Black / White
S20574-40 (M)
S20575-40 (W)
S20576-40 (XW)

Women



Alloy / Charcoal
S10574-30 (M)
S10575-30 (W)



Black / White
S10574-40 (M)
S10575-40 (W)
S10576-40 (XW)



Guide¹³

Guiding every step to feel-good runs.

For those who crave reliable comfort on any run and need some support, the Guide 13 gives the best balance of feel-good cushioning and fluid guidance through the gait cycle.



Category: **Structured Cushioning**

Offset: **8mm (32.5/24.5)**

Weight: **Men 10.2oz (289g) | Women 9.3oz (264g)**

Sizes: **Men 7-13, 14, 15, 16 | Women 5-12**

New Colors: **6/1/20**

SRP: **\$169.95**



Feels responsive and plush

New PWRRUN cushioning provides just-right softness that's responsive enough to tackle as many miles as you wish.



Fluid stability

The new medial TPU guidance frame quickly and quietly guides each foot through its natural gait cycle for the smoothest feel yet.



Fit for all

FORMFIT surrounds the foot with a made-for-me feel that can accommodate a wide range of foot shapes comfortably.

Men



Green Mutant
S20548-10 (M)



Alloy / Red
S20548-30 (M)



Black / White
S20548-40 (M)
S20549-40 (W)

Women



Dusk / Berry
S10548-20 (M)



Black / White
S10548-40 (M)
S10549-40 (W)



Sky Grey / Coral
S10548-45 (M)



New

Ride¹³

The intersection of feel-good and go-fast.

For those who crave reliable comfort on any run, the Ride 13 keeps paving the way to smooth miles with even softer cushioning and a new streamlined fit.



Category: **Neutral**

Offset: **8mm (32/24)**

Weight: **Men 9.8oz (278g) | Women 8.7oz (247g)**

Sizes: **Men 7-13, 14, 15 | Women 5-12**

Available: **5/1/20**

SRP: **\$164.95**



More feel-good cushioning

New PWRRUN cushioning provides just-right softness that's responsive enough to tackle as many miles as you wish.



More smooth miles

The increased durability of the blown rubber outsole means more smooth miles. Plus, it provides added cushioning at a lighter weight.



Fit for all

The clean look of the new FORMFIT construction combines a breathable engineered mesh with 3D printed overlays for a fit that accommodates a wide range of foot shapes comfortably.

Men



Citron Mutant
S20579-10 (M)
Available 6/1/20

Glade / Black
S20579-20 (M)
Available 6/1/20

Charcoal / Black
S20579-30 (M)
S20580-30 (W)

Alloy / Black
S20579-40 (M)

Women



Citron Mutant
S10579-10 (M)
Available 6/1/20

Blush / Dusk
S10579-20 (M)
S10580-20 (W)

Coral / Alloy
S10579-30 (M)

Alloy / Black
S10579-40 (M)
Available 6/1/20



pg. 84

Kinvara¹¹

A lightweight feel for a personal best.

For those working hard to achieve their goals, the lightweight Kinvara 11 has been whittled to be exactly what one needs to be efficient, go fast, chase PRs, and break personal barriers.



Category: **Neutral**

Offset: **4mm (28.5/24.5)**

Weight: **Men 7.8oz (233g) | Women 6.9oz (200g)**

Sizes: **Men 7-13, 14, 15 | Women 5-12**

New Colors: **6/1/20**

SRP: **\$139.95**



Feels light and fast

New PWRRUN cushioning maintains the lightweight responsiveness that makes this shoe a favorite for daily training miles or racing longer distances.



Like a push forward

This flexible sole is designed to quickly transition from landing to take-off.



Disappears on foot

FORMFIT conforms to your foot to provide the perfect fit and feel from every angle.

Men



Blue Mutant
S20551-10 (M)



Red / Black
S20551-30 (M)



Alloy / Charcoal
S20551-40 (M)



Blue / Black
S20551-25 (M)
S20552-25 (W)



Blackout
S20551-35 (M)
S20552-35 (W)

Women



Blue Mutant
S10551-10 (M)



Berry / Gold
S10551-20 (M)



Sky
S10551-30 (M)



Aqua / Blue
S10551-25 (M)
S10552-25 (W)



Blackout
S10551-35 (M)
S10552-35 (W)



pg. 85

Jazz²²

Performance essentials for a good run.

For new runners who want a reliable shoe, the Jazz 22 gets the performance right for a comfortable run—resilient cushioning, a smooth ride, and a comfortable fit.



Category: **Neutral**

Offset: **8mm (31.5/23.5)**

Weight: **Men 9.4oz (266g) | Women 8.3oz (218g)**

Sizes: **Men 7-13, 14, 15 | Women 5-12**

New Colors: **7/1/20**

SRP: **\$129.95**



Resilient cushioning

With new PWRRUN cushioning underfoot, you feel energized to run strong.



Smooth ride

The TRI-FLEX outsole makes the shoe flexible to keep every stride fluid.



Lightweight fit

The step-in comfort FORMFIT cradles your foot under the light, breathable upper.

Men



Alloy / Brick
S20567-30 (M)



Black
S20567-35 (M)

Women



Dusk / Alloy
S10567-20 (M)



Berry / Gold
S10567-30 (M)

Clarion²

The start of great-looking runs.

For newcomers to running, the Clarion 2 gets them off to a great start with responsive cushioning in a technical, sleek silhouette.



Category: **Neutral**
Offset: **8mm (30.5/22.5)**
Weight: **Men 8.6oz (244g) | Women 7.7oz (218g)**
Sizes: **Men 7-13, 14, 15 | Women 5-12**
New Colors: **7/1/20**
SRP: **\$109.95**



Responsive cushioning

A healthy stack of VERSARUN+ cushioning packs plenty of underfoot comfort and protection.



Steady ride

The stable platform and outsole design ensure steady strides at any pace.



Light and sleek

The engineered mesh upper keeps the look streamlined and lets feet breathe easy.

Men



Indigo / Alloy
S20553-20 (M)



Alloy / Red
S20553-30 (M)



Black / Grey
S20553-2 (M)

Women



Berry / Gold
S10553-20 (M)



Sky / Alloy
S10553-30 (M)



Black / Tan
S10553-2 (M)

Cohesion¹³

The fundamentals to get running.

For the price conscious who crave soft comfort, the Cohesion 13 gets the fundamentals right for a smooth run—essential cushioning, durability, and comfortable fit.



Category: **Neutral**

Offset: **12mm (29/17)**

Weight: **Men 8.9oz (252g) | Women 7.3oz (207g)**

Sizes: **Men 7-13, 14 | Women 5-11, 12**

New Colors: **6/1/20**

SRP: **\$94.95**



Feels like a good start

The feel of new VERSARUN cushioning absorbs impact and reduces pressure for comfortable strides at every level of running.



Durable outsole

The segmented rubber outsole flexes for a smooth feel and holds up to lots of miles.



Comfortable fit

The upper delivers a technical look, plenty of breathability, and a comfortable, secure hold.

Men



Alloy / Brick
S20559-5 (M)



Indigo / Silver
S20559-6 (M)



Black / White
S20559-1 (M)
S20560-1 (W)



Black / Black
S20559-4 (M)
S20560-4 (W)

Women



Alloy / Coral / Sky
S10559-5 (M)



Dusk / Blush
S10559-6 (M)



Black / White
S10559-1 (M)
S10560-1 (W)

New

Cohesion^{Sport}

Fundamentally good-looking—running or not.
For those just starting out, the Cohesion Sport packs the necessities for all-day comfort and style for before, during, and after the run.



Category: **Neutral**
Offset: **8mm (28/20)**
Weight: **Men 7.8oz (221g) | Women 6.8oz (193g)**
Sizes: **Men 7-13, 14 | Women 5-11, 12**
Available: **7/1/20**
SRP: **\$99.95**



Versatile cushioning
VERSARUN cushioning packs plenty of underfoot comfort no matter the destination.



Light durability
Rubber placed in high-abrasion zones keep the shoe light yet durable.



Urban style
Simple and clean, these lightweight sneaks look as good paired with jeans as they do with your workout gear.

Men



Black / White
S40047-1 (M)



Charcoal / Black
S40047-2 (M)



Indigo
S40047-3 (M)

Women



Black / Ocean
S30047-1 (M)



Charcoal / Pink
S30047-2 (M)



Indigo / Sky
S30047-3 (M)

New

Stretch & Go Glide

Easy on. Easy go.

Because running around town can feel an endurance sport, the ease and ultra plush comfort of the Stretch & Go Glide has you covered.



Category: **Neutral**

Weight: **Men 7.9oz (224g) | Women 7.1oz (201g)**

Sizes: **Men 7-13, 14 | Women 5-11, 12**

Available: **7/1/20**

SRP: **\$99.95**



Essential cushioning

A moderate stack of VERSARUN cushioning pack plenty of underfoot comfort.



Slip-on comfort

Stretch & Go lacing construction for easy on & off.



Comfortable fit

REACT2U memory foam sockliner, breathable mesh upper, and durable rubber outsole ensures all day comfort.

Men



Black / White
S40048-1 (M)

Women



Black / White / Coral
S30048-2 (M)

Trail Running

Confidence to push boundaries.

For we who love getting out in nature, Saucony Trail Shoes give us the confidence and security to make the most of each moment by giving us grip we can trust, a responsive yet protective feel, and the durability we need to get out there again and again.



Trustworthy grip.

Every sole pattern is carefully considered and masterfully engineered using industry-leading sticky rubber compounds that grip and hold in a variety of trail conditions.

Rugged durability.

Each shoe is built tough to withstand the beating that mother nature can dish out and keep coming back for more—while providing lasting comfort at the same time.

Protective yet responsive.

Each of our cushioning technologies are purposefully selected and calibrated for the trail to give adventurers what they need to make the most of their excursions.

48	Canyon TR	60	Peregrine ICE+
50	Xodus 10	62	Excursion TR 14
52	Switchback 2	64	Excursion TR 14 GTX*
54	Peregrine 10	66	Cohesion TR 13
56	Peregrine 10 ST		
58	Peregrine 10 GTX*		

New

Canyon^{TR}

A smooth ride from road to trail and back again.

For those looking to add variety to their workout routine, the Canyon TR lets them cross over from road to trail with dirt-friendly traction that still rides smooth on the road.



Category: **Neutral**
Offset: **8mm (34/26)**
Weight: **Men 11.0oz (312g) | Women 9.7oz (275g)**
Sizes: **Men 7-13, 14 | Women 5-12**
Available: **7/1/20**
SRP: **\$149.95**



Versatile, off-road grip

The low-profile lugs provide plenty of off-road grip yet are spaced to make the transition from road to trail and back again feel smooth.



Feels responsive and plush

PWRRUN cushioning provides just-right softness that's responsive enough to tackle uneven terrain.



Rugged looks and feel

The comfortable and sleek engineered mesh upper is reinforced with a thin, flexible 3D-printed film for added protection and durability from mud and debris.

Men



Pine / Orange
S20583-1 (M)



Moonrock / Mutant
S20583-2 (M)

Women



Marine / Black
S10583-1 (M)



Moonrock / Mutant
S10583-2 (M)

Xodus¹⁰

Gnarly grip that goes anywhere you dare.

For those who want to test their endurance on technical terrain, the rugged Xodus 10 is packed with plenty of gnarly grip and cushioning to tackle whatever is in front of you.



Category: **Neutral**

Offset: **4mm (31.5/27.5)**

Weight: **Men 11.7oz (332g) | Women 10.5oz (298g)**

Sizes: **Men 7-13, 14 | Women 5-12**

New Colors: **7/1/20**

SRP: **\$179.95**



Unending grip

Aggressive directional lugs combined with the power of PWRRAC gives you the stickiness and confidence to tackle any terrain.



Feels protective

New PWRRUN+ cushioning protects against trail hazards and dishes out consistent energy return mile after mile, now with a lighter feel underfoot.



Durable upper

The trail-specific FORMFIT is reinforced to protect feet from debris while maintaining pliability.

Men



Desert / Pine / Orange
S20555-25 (M)



Moonrock / Coffee
S20555-35 (M)

Women



Marine / Fuchsia
S10555-25 (M)



Moonrock / Black
S10555-35 (M)

New

Switchback²

Dialed to grip and rip trails fast.

For trail runners looking to get to their destination fast, the lightweight Switchback 2 is a race-ready machine that delivers more of what you need—long-distance cushioning placed into a nimble, grippy, and dialed-in package.



Category: **Neutral**
Offset: **4mm (22/18)**
Weight: **Men 8.8oz (249g) | Women 7.8oz (221g)**
Sizes: **Men 7-13, 14 | Women 5-12**
Available: **8/1/20**
SRP: **\$169.95**



Precise grip

The sole's toothy lugs made of PWRTRAC tacky rubber were designed using pressure-mapping data to give you grip exactly where and how you need it.



Quick and protected

New PWRRUN+ cushioning is 25% lighter, allowing for more protection underfoot while retaining the flexibility and energy return that lets you instinctively react to the trail with cat-like agility. A new rock plate ensures no debris slows you down.



New, dialed fit

A new sock-like construction features a side-set BOA lacing system for a locked-in fit that is more comfortable and protects better than ever.

Men



Black / Charcoal
S20581-1 (M)



Pine / Orange
S20581-2 (M)

Women



Black / Charcoal
S10581-1 (M)



Pine / Fuchsia
S10581-2 (M)



pg. 90

Peregrine¹⁰

Grippy versatility handles nearly any trail.

For those who want to confidently explore off-road, the versatile Peregrine 10 is a grippy, protective trail shoe with cushioning that's just right for uphill responsiveness and downhill forgiveness.



Category: **Neutral**

Offset: **4mm (27/23)**

Weight: **Men 10.7oz (303g) | Women 9.3oz (264g)**

Sizes: **Men 7-13, 14 | Women 5-12**

New Colors: **6/1/20**

SRP: **\$149.95**



Grip that won't let go

Aggressive lugs made of PWRTRAC tacky rubber conform to dig in and confidently grip a wide variety of terrains.



Feels rock steady

New PWRRUN cushioning ensures a responsive yet protective feel to push uphill and bomb downhill with confidence. Plus, a rock plate provides additional protection.



Protective and dynamic fit

Reinforced to protect feet from trail debris, the trail-specific FORMFIT design gives the perfect lock-down fit over uneven terrain.

Men



Pine / Orange
S20556-25 (M)



Red / Mutant
S20556-35 (M)



Black / Red
S20556-20 (M)
S20557-20 (W)

Women



Pine / Marine
S10556-25 (M)



Red / Mutant
S10556-35 (M)



Black / Barberry
S10556-20 (M)
S10557-20 (W)



Peregrine¹⁰ ST

Grippy protection made for muddy, sloppy terrain.

For those who run in muddy and wet trail conditions, the Peregrine 10 ST is a grippy, protective trail shoe that's specifically built to take on the sloppiest of off-road conditions.



Category: **Neutral**

Offset: **4mm (28.5/24.5)**

Weight: **Men 11.3oz (320g) | Women 9.9oz (281g)**

Sizes: **Men 7-13, 14 | Women 5-12**

New Colors: **6/1/20**

SRP: **\$149.95**



Grip that won't slip

Deeper directional PWRTRAC lugs give the ultimate grip, specifically made to handle the muddy, wet terrain.



Feels solid and steady

New PWRRUN cushioning ensures a responsive yet protective feel to push uphill and bomb downhill with confidence.



Water-resistant protection

Enhanced water-resistance helps shed mud and the trail-specific FORMFIT design gives the perfect lock-down fit over uneven terrain.

Men



Orange / Blue
S20568-25 (M)

Women



Marine / Pine / White
S10568-25 (M)

Peregrine¹⁰ GTX[®]

Grippy versatility handles nearly any trail.

For those who want to confidently explore off-road, the versatile Peregrine 10 GTX[®] is a waterproof, grippy, and protective trail shoe with cushioning that's just right for uphill responsiveness and downhill forgiveness.



Category: **Neutral**
Offset: **4mm (27/23)**
Weight: **Men 11.2oz (318g) | Women 9.9oz (281g)**
Sizes: **Men 7-13, 14 | Women 5-12**
New Colors: **7/1/20**
SRP: **\$179.95**



Grip that won't let go

Aggressive lugs made of PWRTRAC tacky rubber conform to dig in and confidently grip a wide variety of terrains.



Feels rock steady

New PWRRUN cushioning ensures a responsive yet protective feel to push uphill and bomb downhill with confidence. Plus, a rock plate provides additional protection.



Protective and dynamic fit

Reinforced to protect feet from trail debris, the trail-specific FORMFIT design gives the perfect lock-down fit over uneven terrain. GORE-TEX[®] Invisible Fit Technology provides waterproof protection.

Men



Black / Pine
S20542-2 (M)

Women



Black / Marine
S10542-2 (M)

Peregrine^{ICE+}

Outsmart icy conditions with cutting-edge grip.
For those who don't let snow and ice slow down their outdoor adventures, the Peregrine ICE+ provides protection and a firm grip on winter conditions.



Category: **Neutral**
Offset: **4mm (26/22)**
Weight: **Men 10.4oz (295g) | Women 9.4oz (266g)**
Sizes: **Men 7-13, 14 | Women 5-12**
New Colors: **9/1/20**
SRP: **\$189.95**



Snow and ice traction
Vibram's advanced ARCTIC GRIP® outsole rubber lets you keep pace on the iciest of conditions.



Rock-steady cushioning
The PWRFOAM midsole and EVERUN topsole work together to provide underfoot cushioning that's responsive for pushing uphill and protective for bombing downhill.



Protective fit
The water-resistant upper is reinforced to protect feet from trail debris and adds a hint of warmth.

Men



Black / Blue
S20541-2 (M)

Women



Black / Lavender
S10541-2 (M)

New

Excursion TR¹⁴

Where the trail begins.

For the price conscious who want to hit the dirt, the Excursion TR 14 packs the necessities for a good time—essential cushioning, rugged traction, and durable protection—with a new streamlined look.



Rugged outsole

Grippy lugs on the outsole are made with carbon rubber for rock-solid footings.



Versatile cushioning

A moderate stack VERSARUN cushioning packs plenty of underfoot comfort no matter the destination.



Durable protection

The trail-specific mesh with supportive overlays locks your foot into place and protects from debris without looking or feeling bulky.

Men



Black / Charcoal
S20584-1 (M)
S20585-1 (W)



Blue / Grey
S20584-2 (M)



Grey / Black / Orange
S20584-3 (M)

Women



Black / Charcoal
S10584-1 (M)
S10585-1 (W)



Sky / Coral
S10584-2 (M)



Charcoal / Marine
S10584-3 (M)

Category: **Neutral**

Offset: **8mm (35/27)**

Weight: **Men 10.7oz (303g) | Women 8.8oz (249g)**

Sizes: **Men 7-13, 14 | Women 5-12**

Available: **6/1/20**

SRP: **\$109.95**

New

Excursion TR¹⁴ GTX[®]

Be left high and dry.

This trail running shoe sports all of the great benefits of the Excursion TR14, but with a GORE-TEX[®] membrane that ensures breathable, waterproof protection. So while the weatherman may call for rain, the forecast for your feet will be “dry with a guarantee of happiness”.



Rugged outsole

The triangular-lugged outsole grips the terrain for rock-solid footings.



Versatile cushioning

A moderate stack VERSARUN cushioning packs plenty of underfoot comfort no matter the destination.



Durable protection

The trail-specific mesh with supportive overlays locks your foot into place and protects from trail debris. The GORE-TEX[®] edition is waterproof but breathes.

Men



Black / Citron
S20588-1 (M)

Women



Grey / Coral
S10588-1 (M)

Category: **Neutral**

Offset: **8mm (35/27)**

Weight: **Men 11.9oz (337g) | Women 9.8oz (278g)**

Sizes: **Men 7-13, 14 | Women 5-12**

Available: **7/1/20**

SRP: **\$149.95**

Cohesion TR¹³

The fundamentals to run off-road.

For those who trust the Cohesion on the road, the Cohesion TR 13 gives them rugged traction to venture into new terrain.



Category: **Neutral**

Offset: **12mm (35.5/23.5)**

Weight: **Men 8.9oz (252g) | Women 7.3oz (207g)**

Sizes: **Men 7-13, 14 | Women 5-11, 12**

Available: **Now**

SRP: **\$99.95**



Durable outsole

The rugged outsole gives added off-road traction and holds up to lots of miles.



Feels like a good start

The feel of new VERSARUN cushioning is soft with a little pep for your step. It absorbs impact and reduces pressure for comfortable strides at every level of running.



Comfortable fit

The reinforced upper delivers a technical look, with added protection and durability from trail hazards.

Men



Black / Grey
S20563-1 (M)
S20564-1 (W)

Women



Black / Grey / Light Blue
S10563-1 (M)
S10564-1 (W)

Competition

The winning advantage.

For we who compete to win, Saucony Competition Shoes give us the advantage we need by arming us with features specifically designed to excel at each distance or event—at any level of competition.

- 70 **Type A9**
- 72 **Fastwitch 9**
- 74 **Cross Country**
- 75 **Field**

Type A⁹

Podium-worthy speed.

Featherweight and responsive, the low-profile Type A9 pushes you to your personal best. A sleek update to the upper using 3D Print overlays makes for an increasingly dynamic fit.



Category: **Neutral**
Offset: **4mm (16.5/12.5)**
Weight: **Men 6.0oz (170g) | Women 5.4oz (153g)**
Sizes: **Men 7-13, 14 | Women 5-11, 12**
Available: **6/1/20**
SRP: **\$139.95**



Aggressive outsole

Tacky, durable PWRTRAC provides exceptional traction to keep you cruising towards the finish line.



Responsive cushioning

An SSL EVA midsole provides enough cushioning to keep you comfortable but doesn't weigh you down.



Fit for fast

An engineered mesh upper, featuring 3D printed overlays, makes for an increasingly dynamic fit.

Men



White / Slime
S29065-2 (M)

Women



White / ViZiPink
S19065-2 (M)

Fastswitch⁹

Your guide to fast finishes.

The speedy Fastswitch 9 has what you need to accelerate from finisher to competitor efficiently—a light feel, responsive cushioning, guidance for your gait and aggressive traction.



Category: **Neutral**

Offset: **4mm (18/14)**

Weight: **Men 6.7oz (190g) | Women 5.9oz (167g)**

Sizes: **Men 7-13, 14 | Women 5-11, 12**

Available: **1/1/20**

SRP: **\$139.95**



Aggressive outsole

Tacky, durable PWRTRAC provides exceptional traction to keep you cruising towards the finish line.



Lightweight support

An SSL EVA midsole provides enough cushioning to keep you comfortable but doesn't weigh you down, and the medial post keeps you feeling guided.



Fit for fast

The engineered mesh upper keeps your foot locked in for speed but maintains exceptional flexibility.

Men



Citron
S29053-2 (M)

Women



Citron
S19053-2 (M)

Carrera XC⁴

Cross Country

Weight: **Men 5.4oz (153g) | Women 4.3oz (122g)**

Sizes: **Men 7-13, 14 | Women 5-11, 12**

Available: **6/1/20**

Spike SRP: **\$149.95**

Men



Green / Mutant
S29066-10 (Spike)

Women



Green / Mutant
S19066-10 (Spike)

Kilkenny XC⁸ Spike

Cross Country

Weight: **Men 4.6oz (130g) | Women 4.0oz (113g)**

Sizes: **Men 7-13, 14 | Women 5-11, 12**

New Colors: **6/1/20**

Spike SRP: **\$109.95**

Men



Yellow Mutant
S29068-10 (Spike)



Pine
S29068-20 (Spike)

Women



Yellow Mutant
S19068-10 (Spike)



Marine
S19068-20 (Spike)

Havok XC³

Cross Country

Weight: **Men 5.3oz (153g) | Women 4.8oz (138g)**

Sizes: **Men 7-13, 14 | Women 5-11, 12**

Available: **6/1/20**

Spike SRP: **\$139.95**

Men



Green Mutant
S29074-10 (Spike)



Black
S29074-40 (Spike)

Women



Green Mutant
S19074-10 (Spike)

Unleash SD²

Shotput, Discus, Hammer

Weight: **Men 11.1oz (315g)**

Sizes: **Men 6-13, 14**

Available: **Currently**

- ISOFIT dynamic upper
- FLEXFILM overlays
- Midfoot cross-strap
- Nylon forefoot plate
- High-density rubber outsole

Men



Black / Red
S29035-2 (M)

Uplift HJ²

High Jump

Weight: **Men 8.9oz (252g)**
Sizes: **Men 6-13, 14**
Available: **Currently**
SRP: **\$159.95**

- 6-pin spike plate
- ISOFIT dynamic upper
- Engineered mesh upper
- SSL EVA midsole

Men



ViziRed / Citron
S29036-2 (M)

Lanzar Jav²

Javelin

Weight: **Men 11.0oz (312g)**
Sizes: **Men 6-13, 14**
Available: **Currently**
SRP: **\$159.95**

- 4-pin spike plate
- Mesh upper
- 3D printed overlays
- Molded EVA midsole

Men



Citron / Black
S29038-2 (M)

Soarin J²

Long Jump, Triple Jump, Pole Vault

Weight: **Men 8.9oz (252g)**
Sizes: **Men 6-13, 14**
Available: **Currently**
SRP: **\$159.95**

- 8-pin spike plate
- ISOFIT dynamic upper
- Midfoot cross-strap
- FLEXFILM overlays
- Die-cut EVA midsole
- Durable rubber heel outsole

Men



Blue / Slime
S29037-2 (M)

Exite LE⁹

Walking

Sizes: **Men 7-13, 14 | Women 5-11, 12**
SRP: **\$109.95**

Men



Black Leather
S40210-1 (M)
S40211-1 (W)

Women



Black Leather
S50210-1 (M)
S50211-1 (W)



New

Echelon Walker³

An accommodating fit for all who walk.

For those who need a shoe that meets a wide-range of needs, the generous and accommodating Echelon Walker³ welcomes them with feel-good cushioning and a balanced and stable ride.



Category: **Walking**

Weight: **Men 13.9oz (394g) | Women 12.5oz (354g)**

Sizes: **Men 7-13, 14 | Women 5-11, 12**

Available: **7/1/20**

SRP: **\$169.95**



Feels light and springy

PWRRUN+ topsole and VERSARUN midsole are the next generation of amazing cushioning and gives you a luxurious underfoot feel that won't break down.



Durable upper

With a crafted full grain leather upper, every stroll a comfortable one.



Slip-resistant outsole

Slip-resistant outsole allows for confident strides on all type of surfaces.

Men



White
S40200-1 (M)
S40201-1 (W)



Black
S40200-2 (M)
S40201-2 (W)

Women



White
S50200-1 (M)
S50201-1 (W)



Black
S50200-2 (M)
S50201-2 (W)



New

Omni Walker³

All-day comfort and stability.

For those who need an extremely comfortable and plush walking shoe with the perfect amount of stability and cushioning for moderate overpronating.



Category: **Walking**

Weight: **Men 12.9oz (366g) | Women 11.6oz (329g)**

Sizes: **Men 7-13, 14 | Women 5-11, 12**

Available: **7/1/20**

SRP: **\$149.95**



Feels light and springy

PWRRUN is the next generation of amazing cushioning and gives you a luxurious underfoot feel that won't break down.



Durable upper

With a crafted full grain leather upper, every stroll a comfortable one.



Slip-resistant outsole

Slip-resistant outsole allows for confident strides on all type of surfaces.

Men



White
S40202-1 (M)
S40203-1 (W)



Black
S40202-2 (M)
S40203-2 (W)

Women



White
S50202-1 (M)
S50203-1 (W)



Black
S50202-2 (M)
S50203-2 (W)



New

Integrity Walker³

Walk on, all day.

For those who need responsive cushioning from a neutral walker, the Integrity Walker³ features a premium full grain leather upper for a secure fit to last all day.



Feels light and springy

VERSARUN is the next generation of amazing cushioning and gives you a luxurious underfoot feel that won't break down.



Durable upper

With a crafted full grain leather upper, every stroll a comfortable one.



Slip-resistant outsole

Slip-resistant outsole allows for confident strides on all type of surfaces.

Women



White
S50204-1 (M)
S50205-1 (W)
S50206-1 (N)
S50208-1 (XW)



Black
S50204-2 (M)
S50205-2 (W)
S50208-2 (XW)



Grey
S50204-3 (M)
S50205-3 (W)
S50208-3 (XW)

Category: **Walking**

Weight: **Women 10.3oz (292g)**

Sizes: **Women 5-11, 12**

Available: **6/1/20**

SRP: **\$129.95**



Ride¹³

Kids'

Weight: **5.2oz (147g)**
Sizes: **Boy 1-7 | Girl 1-7**
Available: **5/25/20**
SRP: **\$89.99**

Boy



Citron Mutant
SK263232 (M)

Girl



Purple
SK163233 (M)

- Lace closure for a snug fit
- No-sew material application for a lightweight, seamless and flexible feel
- Anti-stink lining that fights bacteria
- Reinforced toe cap for durability
- Contoured FORMFIT Performance footbed
- Non-marking rubber outsole for durability
- TRI-FLEX rubberized lugs for grip

Kinvara¹¹

Kids'

Weight: **3.93oz (111.5g)**
Sizes: **Boy 10.5-7 | Girl 10.5-7**
New Colors: **6/25/20**
SRP: **\$69.99**

Boy



Black / Red / Blue
SK264008 (M, W)

Girl



Blue Mutant
SK164009 (M, W)

- Lightweight upper with FLEXFILM for durability
- FORM-2-U memory foam technology at footbed for extra comfort
- Rubber at toe and heel for extra durability
- Contoured FORMFIT performance midsole
- Anti-stink lining that fights bacteria
- Non-marking rubber outsole for durability
- TRI-FLEX rubberized lugs for grip

Guide¹³

Kids'

Weight: **5.64oz (160g)**
Sizes: **Boy 1-7 | Girl 1-7**
New Colors: **5/25/20**
SRP: **\$89.99**

Boy



Alloy / Red
SK263235 (M)

Girl



Dusk / Berry
SK163236 (M)

- Medial side post for added stability
- POWERGRID heel insert for premium cushioning
- Compression molded EVA for constant cushioning
- Anti-stink lining that helps prevent bacteria
- TRI-FLEX rubberized lugs on the outsole for grip
- Non-marking rubber outsole for durability

Flash A/C^{2.0}

Kids'

Weight: **140g**
Sizes: **Boy 10.5-5 | Girl 10.5-5**
New Colors: **5/25/20**
SRP: **\$64.99**

Boy



Grey / Black / Blue
SK263722 (M, W)

Blue / Red / White
SK264005 (M)

Available 6/25/20

Girl



Pink / Metallic
SK163724 (M, W)

Turquoise / Silver
SK164006 (M)

- Convenient alternative closure for easy on/off and adjustability
- Anti-stink lining that helps prevent bacteria
- Close to the ground feel for enhanced stability
- Lightweight EVA midsole for extra cushioning
- Non-marking traction pods on the outsole for a serious grip
- Durable leather and breathable mesh upper
- APMA certified
- Toe Cap for extra durability

Wind

Kids'

Sizes: **Boy 10.5-7 | Girl 10.5-7**

New Colors: **6/25/20**

SRP: **\$59.99**

- Anti-stink lining that helps prevent bacteria
- Close to the ground feel for enhanced stability
- Lightweight EVA midsole for extra cushioning
- Non-marking traction pods on the outsole for a serious grip
- Durable leather and breathable mesh upper
- APMA certified

Boy



Grey / Blue / Red
SK263739 (M)

Black
SK261815 (M, W, XW)

Girl



Navy / Turquoise
SK163740 (M)

Wind^{A/C}

Kids'

Sizes: **Boy 10.5-7 | Girl 10.5-7**

New Colors: **6/25/20**

SRP: **\$59.99**

- Alternative closure for easy on/off
- Anti-stink lining that helps prevent bacteria
- Close to the ground feel for enhanced stability
- Lightweight EVA midsole for extra cushioning
- Non-marking traction pods on the outsole for a serious grip
- Durable leather and breathable mesh upper
- APMA certified

Boy



Black / Multi
SK263741 (M)

Navy
SK261527 (M, W, XW)

Black
SK260952 (M, W)

Girl



Blue / Multi
SK163742 (M)

Purple
SK161528 (M, W, XW)

Wind Shield

Kids'

Sizes: **Boy 10.5-7 | Girl 10.5-7**

Available: **5/25/20**

SRP: **\$69.99**

- Lace closure for a snug fit
- Water-repellent upper for protection from the elements
- Anti-stink lining that fights bacteria
- Stretchable heel that allows for easy foot entry and a secure fit
- Lightweight EVA midsole for cushioning
- Non-marking rubber outsole for durability
- APMA certified

Boy



Navy / Red
SK263737 (M)

Girl



Grey / Turquoise
SK163251 (M)

Wind Shield^{A/C}

Kids'

Sizes: **Boy 10.5-7 | Girl 10.5-7**

Available: **5/25/20**

SRP: **\$69.99**

- Alternative closure for easy adjustability and on/off
- Water-repellent upper for protection from the elements
- Anti-stink lining that fights bacteria
- Stretchable heel that allows for easy foot entry and a secure fit
- Lightweight EVA midsole for cushioning
- Non-marking rubber outsole for durability

Boy



Navy / Red
SK263252 (M)

Girl



Grey / Turquoise
SK163254 (M)

New

New

Wind Shield^{AC JR}

Baby

Sizes: **Boy 4-12 | Girl 4-12**

Available: **5/25/20**

SRP: **\$59.99**

- Alternative closure for easy adjustability and on/off
- Water-repellent upper for protection from the elements
- Anti-stink lining that fights bacteria
- Stretchable heel that allows for easy foot entry and a secure fit
- Lightweight EVA midsole for cushioning
- Non-marking rubber outsole for durability

Boy



Navy / Red
SL263705 (M, W)

Girl



Silver / Purple
SL163706 (M, W)

Vertex^{A/C}

Kids'

Sizes: **Boy 10.5-7 | Girl 10.5-7**

Available: **6/25/20**

SRP: **\$69.99**

- Alternative closure with extended gore strap for easy adjustability and on/off
- Anti-stink lining that fights bacteria
- Reinforced toe cap for durability
- Lightweight EVA midsole for cushioning
- Non-marking rubber outsole for durability
- Deep flex grooves in outsole provide greater flexibility

Boy



Grey / Black
SK263258 (M, W)

Girl



Black / Rose / Gold
SK163261 (M, W)

Vertex^{Lace}

Kids'

Sizes: **Boy 10.5-7 | Girl 10.5-7**

Available: **6/25/20**

SRP: **\$69.99**

- Lace closure for a snug fit
- Anti-stink lining that fights bacteria
- Reinforced toe cap for durability
- Lightweight EVA midsole for cushioning
- Non-marking rubber outsole for durability
- Deep flex grooves in outsole provide greater flexibility

Boy



Grey / Blue / Red
SK264022 (M)

Olive Camo
SK264023 (M)

Girl



Blush / Grey
SK164024 (M)

Silver / Turquoise
SK164025 (M)

Peregrine 10^{Shield}

Kids'

Weight: **148.5g**

Sizes: **Boy 10.5-7 | Girl 10.5-7**

New Colors: **6/25/20**

SRP: **\$74.99**

- Leather and water-resistant mesh upper for protection
- Traditional lace closure
- Water-resistant run-shield technology to keep feet dry
- Lightweight EVA midsole for cushioning
- Anti-stink lining that fights bacteria
- Non-marking rubber outsole for durability

Boy



Black
SK262436 (M)

Girl



Navy / Purple / Turquoise
SK164014 (M)

Peregrine 10^{Shield A/C}

Kids'

Weight: **149.5g**

Sizes: **Boy 10.5-7 | Girl 10.5-7**

Available: **6/25/20**

SRP: **\$74.99**

Boy



Red
SK263269 (M)

Girl



Navy / Purple / Turquoise
SK163270 (M)

- Leather and water-resistant mesh upper for protection
- Alternative closure for easy on/off
- Water-resistant run-shield technology to keep feet dry
- Lightweight EVA midsole for cushioning
- Anti-stink lining that fights bacteria
- Non-marking rubber outsole for durability

Ride 10^{JR}

Baby

Sizes: **Boy 4-12 | Girl 4-12**

New Colors: **5/25/20**

SRP: **\$59.99**

Boy



Grey / Blue / Black
SL263405 (M, W)



Navy / Green
SL262521 (M, W)

Girl



Pink / Metallic
SL163407 (M)
Available 6/25/20



Silver / Pink
SL162523 (M, W)

- Leather and mesh upper for durability and breathability
- Alternative closure for easy on/off
- Anti-stink lining that helps prevent bacteria
- Close to the ground feel for stability
- Cushy EVA midsole for lightweight feel
- Non-marking traction pods on the outsole for serious grip
- APMA certified

Switchback^{2.0}

Kids'

Sizes: **Boy 10.5-7 | Girl 10.5-7**

Available: **6/25/20**

SRP: **\$79.99**

Boy



Navy / Orange
SK263271 (M)

Girl



Grey / Magenta
SK163273 (M)

- BOA® Fit System for a fast, micro-adjustable lace fit
- Lightweight and breathable upper
- No-sew material application for a lightweight, seamless and flexible feel
- Anti-stink lining that fights bacteria
- Reinforced toe cap for durability
- Single-density midsole for cushioning and comfort
- Contoured FORMFIT Performance footbed
- Non-marking rubber outsole for durability

Kinvara 11^{JR}

Baby

Weight: **80g**

Sizes: **Boy 4-12 | Girl 4-12**

New Colors: **6/25/20**

SRP: **\$54.99**

Boy



Seaport
SL262524 (M, W, XW)

Girl



Sky
SL164040 (M, W, XW)

- Alternative closure for easy on/off
- Lightweight upper with FLEXFILM for durability
- FORM-2-U memory foam technology at footbed for extra comfort
- Rubber at toe and heel for extra durability
- Contoured FORMFIT performance midsole
- Anti-stink lining that fights bacteria
- Non-marking rubber outsole for durability
- TRI-FLEX rubberized lugs for grip

Jazz Riff/Crib

Weight: 149.5g
Sizes: **Baby 4-12 | Baby 1-3**
Available: **6/25/20**
SRP: **\$54.99**



Navy / Space
SL263806 (M)



Navy / Red
SL264027 (M,W)



Grey / Fuchsia
SL164029 (M)



Navy / Magenta
SI164030 (M,W)



White / Gold
SL163363 (M)



Grey / White
SL262498 (M)



Pink / White
SL162500 (M)
Sizes 1, 2, 3



Navy / White
SI262839 (M)
Sizes 1, 2, 3



Pink / White
SI162840 (M)
Sizes 1, 2, 3

Cohesion^{Sport}

Kids'
Sizes: **Boy 10.5-7 | Girl 10.5-7**
Available: **5/25/20**
SRP: **\$69.99**

Boy



Black
SK263289 (M, W) Navy
SK263290 (M, W)

Girl



Blue / Coral
SK163291 (M, W)

- Mesh upper for breathability
- Traditional lace closure for a secure fit
- TRI-FLEX rubberized lugs for grip
- Non-marking rubber outsole for durability
- Anti-microbial treatment lining to minimize the risk of odor causing bacteria

New

Styles Available At Once

Hurricane²²

Structured Cushioning

Offset: **8mm (33.5/25.5)**

Weight: **Men 11.7oz (335g) | Women 10.2oz (290g)**

Sizes: **Men 7-13, 14, 15 | Women 5-12**

Men



Blackout
S20544-35 (M)

Women



Blackout
S10544-35 (M)

Liberty ISO²

Structured Cushioning

Offset: **4mm (26.5/22.5)**

Weight: **Men 9.9oz (287g) | Women 8.9oz (252g)**

Sizes: **Men 7-13, 14, 15 | Women 5-12**

Men



Blackout
S20510-35 (M)

Green / Teal
S20510-37 (M)

Grey / Yellow
S20510-45 (M)

Women



Blackout
S10510-35 (M)

Purple / Peach
S10510-37 (M)

Sky Grey / Coral
S10510-45 (M)

Styles Available At Once

Freedom³

Neutral

Offset: **4mm (27.5/23.5)**

Weight: **Men 8.4oz (239g) | Women 7.8oz (222g)**

Sizes: **Men 7-13, 14, 15 | Women 5-12**

Men



Blackout
S20543-35 (M)

Black / Yellow
S20543-45 (M)

Women



Aqua / Blue
S10543-25 (M)

Blackout
S10543-35 (M)

Sky Grey / Coral
S10543-45 (M)

Guide¹³

Structured Cushioning

Offset: **8mm (32.5/24.5)**

Weight: **Men 10.2oz (289g) | Women 9.3oz (264g)**

Sizes: **Men 7-13, 14, 15, 16 | Women 5-12**

Men



Blackout
S20548-35 (M)
S20549-35 (W)

Grey / Yellow
S20548-45 (M)

Women



Blackout
S10548-35 (M)
S10549-35 (W)

Sky Grey / Coral
S10548-45 (M)

Styles Available At Once

Kinvara¹¹

Neutral

Offset: **4mm (28.5/24.5)**

Weight: **Men 7.8oz (233g) | Women 6.9oz (200g)**

Sizes: **Men 7-13, 14, 15 | Women 5-12**

Men



Yellow
S20551-45 (M)

White / Grey
S20551-55 (M)

Women



Sky Grey / Coral
S10551-45 (M)

Coral
S10551-46 (M)

White
S10551-55 (M)

Redeemer ISO²

Neutral

Offset: **8mm (30/22)**

Weight: **Men 12.0oz (340g) | Women 10.5oz (298g)**

Sizes: **Men 7-13, 14, 15 | Women 5-12**

Men



Grey / Black / Red
S20381-1 (M)
S20382-1 (W)

Grey / Black
S20381-35 (M)
S20382-35 (W)

Women



Grey / Black / Blue
S10381-1 (M)
S10382-1 (W)

Black / Aqua / Violet
S10381-35 (M)
S10382-35 (W)

Styles Available At Once

Jazz²²

Neutral

Offset: **8mm (31.5/23.5)**

Weight: **Men 9.4oz (266g) | Women 8.3oz (218g)**

Sizes: **Men 7-13, 14, 15 | Women 5-12**

Men



Blue / Black
S20567-25 (M)

Women



Blue / Aqua
S10567-25 (M)

Clarion²

Neutral

Offset: **8mm (30.5/22.5)**

Weight: **Men 8.6oz (244g) | Women 7.7oz (218g)**

Sizes: **Men 7-13, 14, 15 | Women 5-12**

Men



Blue / Black
S20553-1 (M)

Women



Plum / Black
S10553-1 (M)

Cohesion¹³

Neutral

Offset: **12mm (35.5/23.5)**

Weight: **Men 8.9oz (252g) | Women 7.3oz (207g)**

Sizes: **Men 7-13, 14 | Women 5-11, 12**

Men



Grey / Citron
S20559-2 (M)

Dark Grey / Orange
S20559-3 (M)

Women



Grey / Dark Brown
S10559-2 (M)

Blue Mist / Melon
S10559-3 (M)

Black / Black
S10559-4 (M)

Styles Available At Once

Fastwitch⁹

Racing

Offset: **4mm (18/14)**
Weight: **Men 6.7oz (190g) | Women 5.9oz (167g)**
Sizes: **Men 7-13, 14 | Women 5-11, 12**

Men



Black / White
S29053-1 (M)

Women



ViziRed / White
S19053-1 (M)

Xodus¹⁰

Trail

Offset: **4mm (31.5/27.5)**
Weight: **Men 11.7oz (332g) | Women 10.5oz (298g)**
Sizes: **Men 7-13, 14 | Women 5-12**

Men



Black
S20555-20 (M)

Women



Steel
S20555-30 (M)

Women



Black
S10555-20 (M)



Dusk
S10555-30 (M)

Peregrine¹⁰

Trail

Offset: **4mm (27/23)**
Weight: **Men 10.7oz (303g) | Women 9.3oz (264g)**
Sizes: **Men 7-13, 14 | Women 5-12**

Men



Steel
S20556-30 (M)

Women



Dusk
S10556-30 (M)

Styles Available At Once

Peregrine¹⁰ ST

Neutral

Offset: **4mm (28.5/24.5)**
Weight: **Men 11.3oz (320g) | Women 9.9oz (281g)**
Sizes: **Men 7-13, 14 | Women 5-12**

Men



Red / Black
S20568-20 (M)

Women



Barberry / Black
S10568-20 (M)

Peregrine¹⁰ GTX[®]

Trail

Offset: **4mm (27/23)**
Weight: **Men 11.2oz (318g) | Women 9.9oz (281g)**
Sizes: **Men 7-13, 14 | Women 5-12**

Men



Grey / Black
S20542-1 (M)

Women



Grey / Black
S10542-1 (M)

Peregrine^{ICE+}

Trail

Offset: **4mm (26/22)**
Weight: **Men 10.4oz (295g) | Women 9.4oz (266g)**
Sizes: **Men 7-13, 14 | Women 5-12**

Men



Black / Grey
S20541-1 (M)

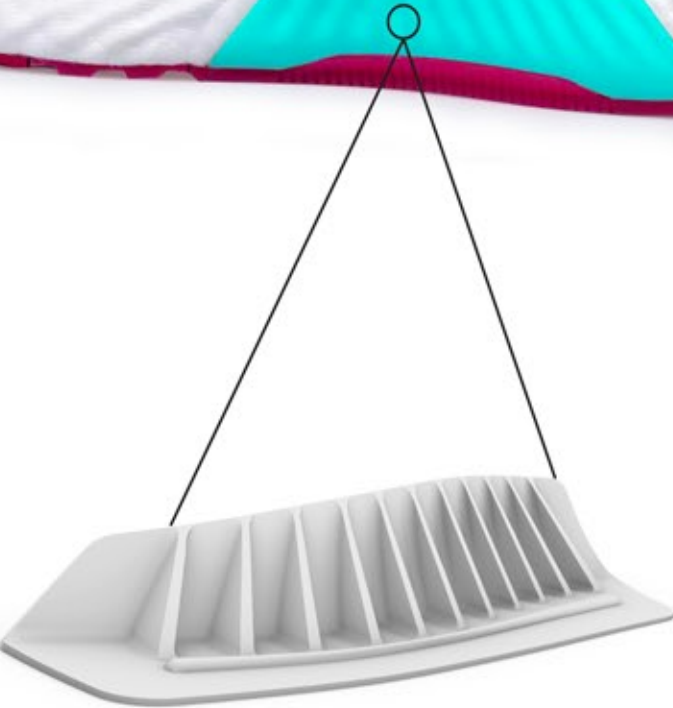
Women



Black / Green
S10541-1 (M)

Structured Cushioning

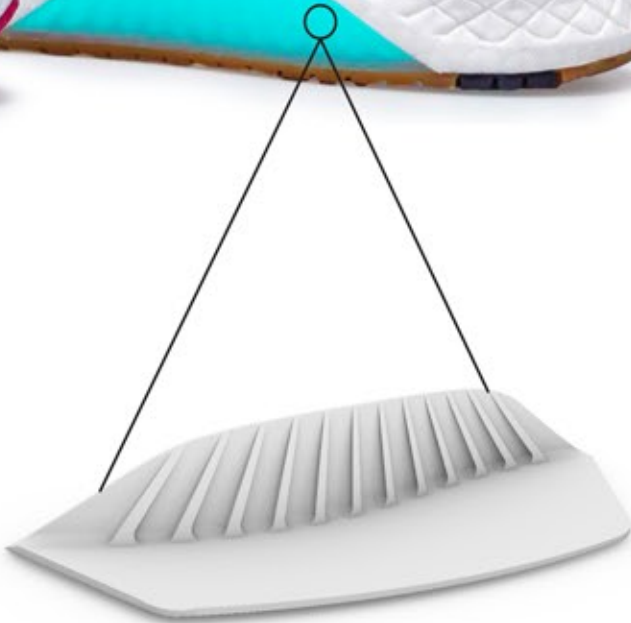
After a runner finds the right level of cushioning to work with their stride, some find they're more comfortable if the shoe provides a bit of medial structure to reduce the torque experienced around the joints of the ankle and foot. We found that we can create sufficient torque control without reducing cushioning by embedding a molded TPU structure beneath a layer of midsole foam. The shape and size of the structures are engineered to complement the cushioning characteristics of each model.



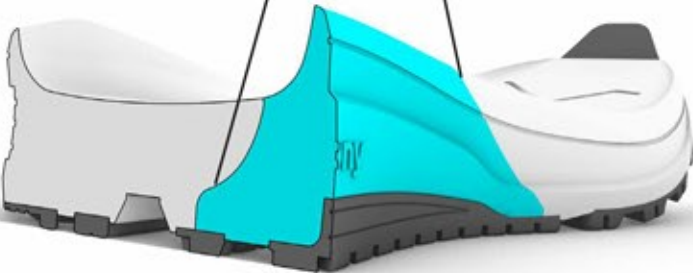
Hurricane 22



Guide 13



Liberty ISO 2



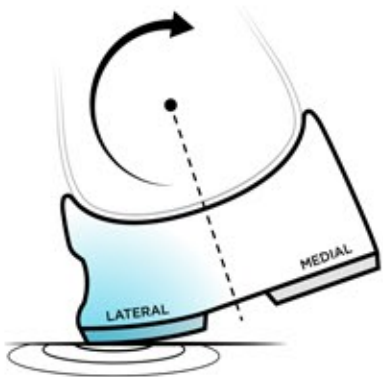
Omni 13

Stability

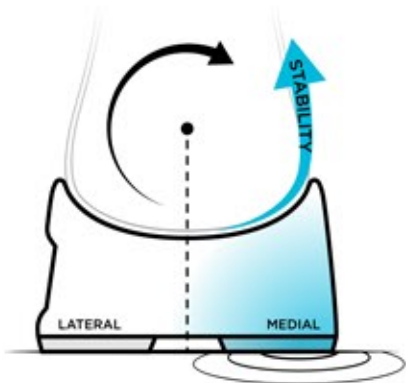
For runners who need a significant amount of control, we use the tried and true full height medial post constructed from a higher durometer EVA foam that extends underneath the heel.

Support good habits.

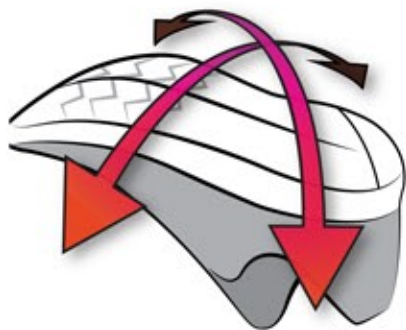
Many runners find that they need their footwear to help them maintain a comfortable alignment. For those runners we build shoes with added structure to help reduce the joint torques that overstress their bodies. A runner's individual body and stride dynamics determine how much added structure they need from their shoes. The level of support is determined by the balance between lateral and medial constructions.



Landing Zone: Torque Reduction
Lateral point of contact engineered to decrease twisting force around ankle joints generated by foot strike.



Medial Structure Zone: Torque Resistance
Stiffer medial construction counters inward rotation force generated by lateral heel strike.

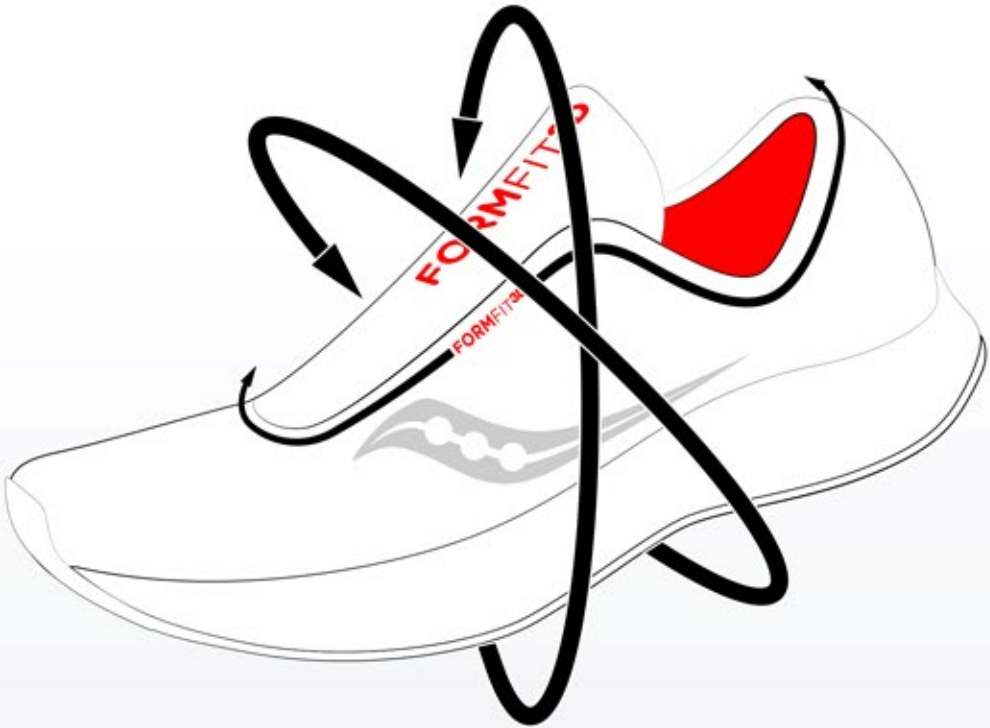


Midfoot Torsional Flexibility
Allows foot to roll to ground with a smooth natural motion rather than slapping down.

Good from all angles.

We've expanded FORMFIT to extend beyond an underfoot cradle to provide better adaptability to your foot from every touchpoint. It's the sum of a host of craftsmanship techniques—like 3D Printed overlays, soft engineered mesh, and contoured heel collars—that conform to you for a made-for-me-feel. The end-result is comfort that disappears on foot, so you stay focused on the distance ahead.

FORMFIT



- Collar foam
- Tongue foam
- Lining
- Last shape
- Sockliner
- Topsole/strobel
- Footbed contour
- Manufacturing processes

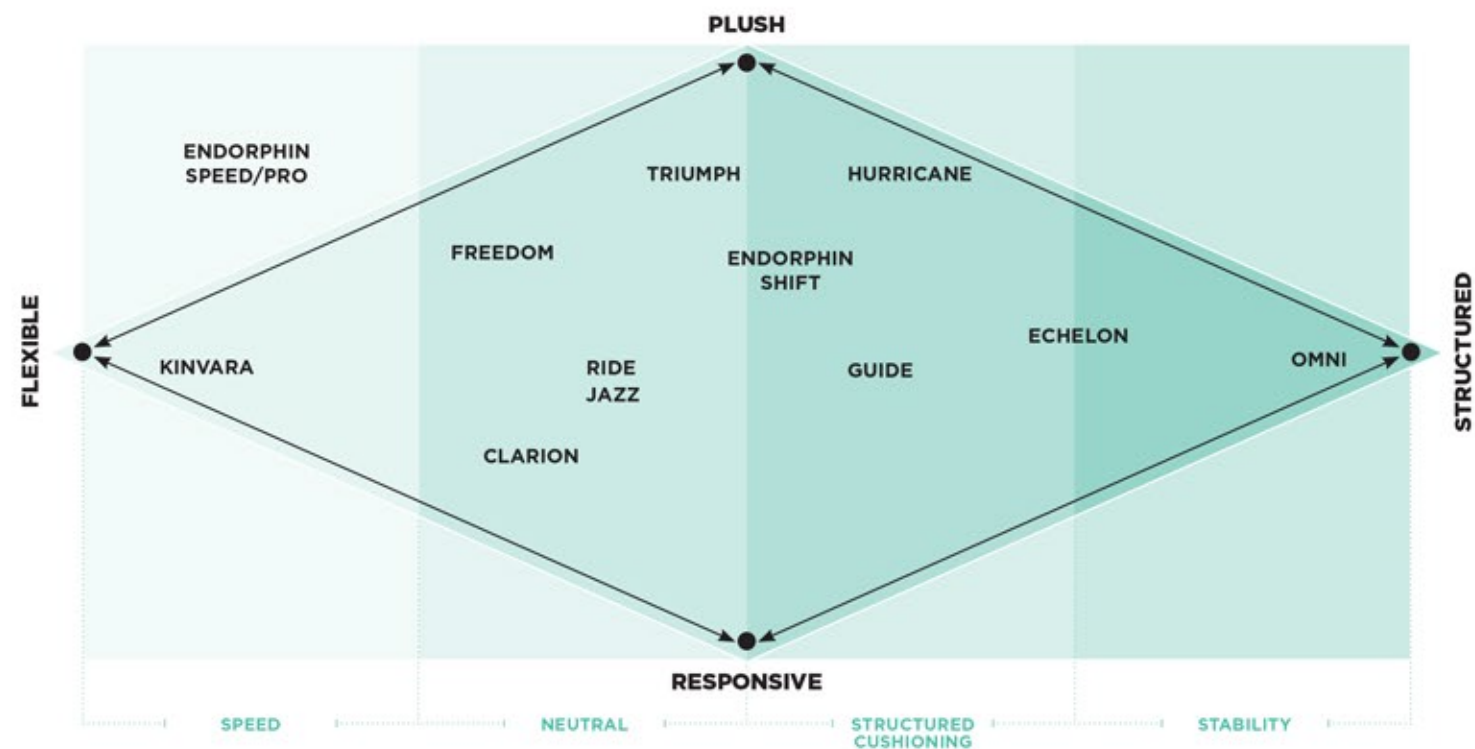
**Unrestricted
forefoot**

**Adjustable
midfoot**

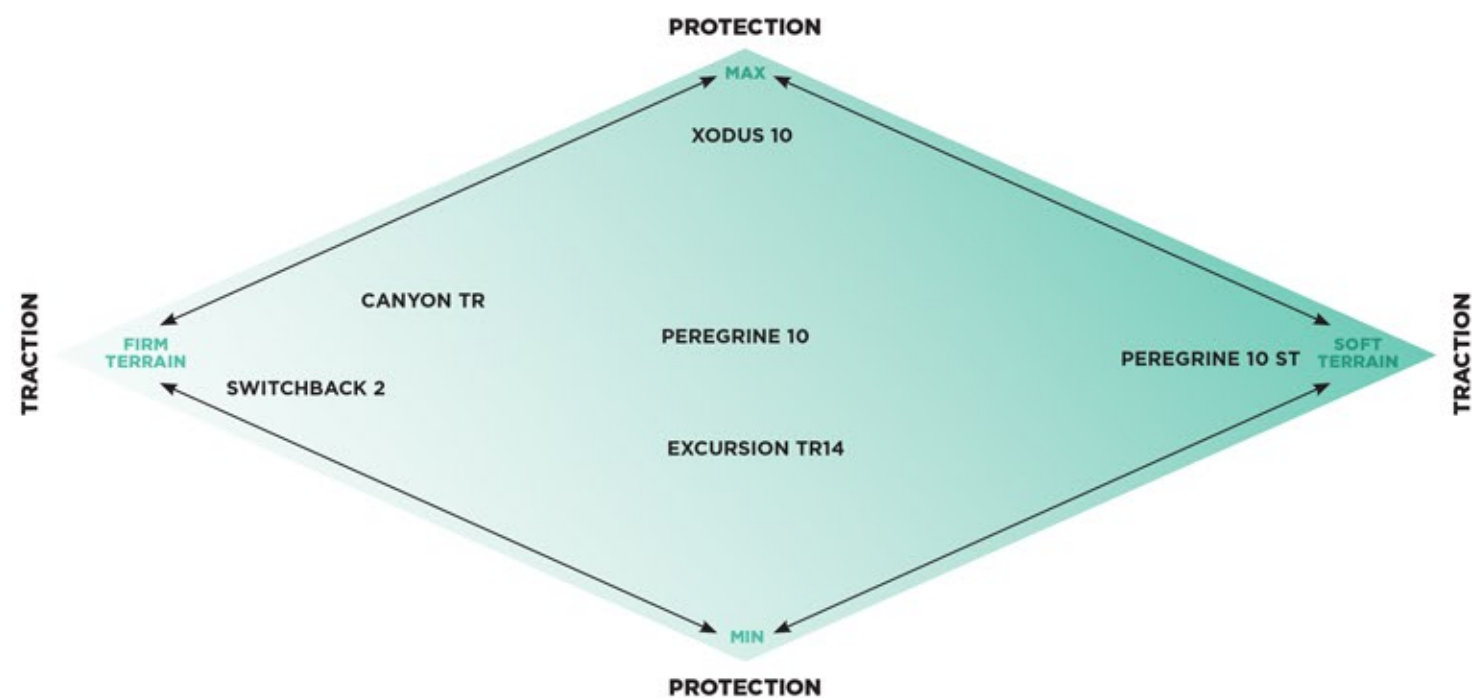
**Secure
heel**

**Adaptive
underfoot**

Road Product Diamond



Trail Product Diamond



Run Product Flow Calendar

May 2020 – December 2020



Technology Glossary

COMFORT LITE SOCKLINER

Molded sockliner contoured to cradle the heel, support the arch and reduce peak pressures in the forefoot. Built from premium EVA for an exceptionally responsive feel.

EVERUN

A super-resilient cushioning made up of tiny beads of PU foam that's naturally flexible, huge on energy return, and inherently durable for a consistent feel from step one to a million and one.

FLEXFILM

Lightweight yet strong material allows for fewer layers in the upper for a seamless, flexible feel.

FORMFIT

Our exclusive 3D approach to fit that feels personalized through the use of an underfoot cradle construction that is topped with cushioning that shapes to you, plus upper materials that flex, stretch, and protect.

FOUNDATION PLATFORM

Provides a highly versatile, accommodating fit and feel designed to maximize comfort and support. Specifically designed for compatibility with orthotics or shoe inserts.

GRID

Offers stable cushioning in the heel.

iBR+

33% lighter and provides more cushioning compared to standard blown rubber.

ISOFIBER

A lightweight structure system integrated into the upper around the heel and midfoot for lightweight support and hold.

ISOKNIT

The great sock-like fit of ISOFIT combined with an engineered knit textile to give you support, breathability and flexibility in all the right places.

ISOFIT

A soft inner sleeve and floating support cage combine to create a dynamic fit system that adapts to the shape and motion of your foot.

OFFSET

Heel-to-toe differential of the shoe, inclusive of the midsole and outsole measurements.

POWERGRID

PWRFOAM material is integrated with GRID technology to create a system that effectively centers the foot, absorbs impact and distributes pressure, resulting in an exceptionally smooth and responsive ride.

PROGRID

More responsive than EVA, ProGrid provides incredible cushioning in a lightweight package.

PRO-LOCK

Supportive straps on either side of the midfoot that encase the foot and lock it to the platform.

PWRGRID+

PWRGRID+ platform is over 20% more cushioned and 15% more resilient than a standard POWERGRID construction, providing a plush feel, responsive ride, and superior impact protection.

PWRFOAM

An EVA-based cushioning that provides durability, resiliency and responsiveness.

PWRRUN+

The latest breakthrough in PU-based cushioning that is formulated at a lower density to increase the softness and decrease the weight of the super-resilient cushioning. It gives you the best in all six aspects of cushioning—impact absorption, stride response, pressure reduction, energy return, durability, and weight.

PWRRUN^{PB}

PWRRUN^{PB} is Saucony's premiere cushioning material. A beaded foam made from a proprietary blend of PEBA polymers, PWRRUN PB is ½ the weight of EVA and exceptionally bouncy (88% energy return). It also is very consistent across a wide range of temperatures, and dramatically more durable than EVA.

PWRRUN

The latest upgrade in EVA-based cushioning that provides even more energy-return rebound and durability than previous formulations.

PWRTRAC

Tacky, durable rubber providing exceptional traction and abrasion resistance. Compound has a Coefficient of Friction (COF) that is 3x that of normal carbon rubber.

RUNDRY

Collar lining material combines superior moisture wicking properties with a plush feel for comfort.

REACT2U

Ultra-plush memory foam footbed for ultimate cushioning.

REACT2U+

Fabric-less memory foam footbed for a more responsive feel and step in comfort.

SAUC-FIT

Supports the medial arch and provides a snug, secure fit.

SRC

Super Rebound Compound provides durable shock absorption in the heel crashpad to help reduce torque and allow for a smooth transition into the midfoot.

SSL

Saucony Super Lite EVA blend that maximizes rebound and durability while minimizing weight.

SUPPORT FRAME

Molded support locks the heel in place for a secure, stable fit.

TRI-FLEX

Our TRI-FLEX outsole works to increase force dispersion over a greater surface area while also delivering optimal flexibility and traction.

VERSAFOAM

A durable EVA-based cushioning that has been tuned for a responsive ride.

VERSARUN

An incredible value-oriented EVA-based cushioning that feels responsive and has the durability required to hold up to a variety of activities.

XT-900

Premium carbon rubber outsole material that offers exceptional traction and high-wear properties.

XT-600

Carbon rubber outsole material that offers exceptional abrasion and traction properties.

Terms & Conditions

ORDERS

All orders are subject to acceptance by Saucony, Inc. (hereinafter called SAUCONY).

WEIGHTS

Weights listed for shoes are approximate and may vary. All shoe weights are examples based on a men's sample size 9 and women's sample size 8. Weights will vary by size.

PRICES

Prices are subject to change without notice. At-once orders will be invoiced at the prices prevailing at the time of shipments. Prices are not guaranteed except under SAUCONY's booking programs.

TERMS OF SALE

All SAUCONY goods shall be sold F.O.B. shipping point. Payment for all SAUCONY goods sold on open account will be due and payable pursuant to the terms and conditions stated on SAUCONY's invoice. The terms and conditions contained herein and in any SAUCONY Sales Orders take precedence over any terms and conditions set forth in Customer's Purchase Order or other similar document. Any sums not paid within net terms are subject to a late charge at the rate of the less or 1.5% of such amount per month (18% per year), or the highest rate permitted by law, until such amount is paid. Applicant shall pay costs, expenses and reasonable attorney's fees as SAUCONY may incur in any manner of collection of any sums past due. These terms of sale shall be constructed under Massachusetts law. Any proceeding arising out of, or in connection with, this agreement may be brought in any state or federal court of competent jurisdiction within the state of Massachusetts, and the Customer consents to the jurisdiction of such courts.

CANCELLATIONS/REVISIONS

Any request for cancellation or revision of an order for SAUCONY goods must be made through the SAUCONY Customer Service Team. A request to cancel an order which has been entered into SAUCONY's order system must be made, in writing, at least three (3) weeks prior to the requested need date and is subject to SAUCONY's approval. During booking season, we begin shipping orders two (2) weeks before the requested ship date in order to accommodate the volume of orders we receive. Cancel dates are strictly adhered to.

LOSS OR DAMAGE IN TRANSIT

SAUCONY shall not be responsible for SAUCONY goods lost or damaged in transit. Customer shall be responsible for checking its shipment upon delivery for total carton count and condition. Any shortage in total carton count or evidence of damage to SAUCONY goods must be noted on the carrier's delivery receipt and reported to the carrier's local office immediately upon receipt of goods.

SHORTAGES IN UNOPENED CARTONS

All shortages must be reported to the SAUCONY Customer Service Team within

ten (10) days from the date of SAUCONY's invoice. Customer shall be required to furnish SAUCONY with an invoice or shipping order number and an itemization of all shortages/overages by product code, size and quantity. Incomplete claims and claims filed more than thirty (30) days after the SAUCONY invoice date will not be accepted. Customer shall be required to furnish Customer's claim number, if any, when reporting a claim.

BACK ORDERS

All back orders shall be shipped F.O.B. shipping point. No deductions are allowed for freight, parcel post or UPS charges. All back orders not shipped within thirty (30) days of the requested ship date will be canceled unless otherwise requested in writing by Customer.

DEFECTIVE RETURNS

Returns of defective shoes must be authorized in advance by SAUCONY Customer Service. SAUCONY will issue the appropriate number of return authorization labels to Customer. All defective returns must have a valid SAUCONY return authorization label affixed to the outside of each carton. Cartons delivered without a valid return authorization label will be refused by SAUCONY. Returns must state what is defective on each shoe. Customer shall not package returns to stock with defective returns.

Authorized defective returns are to be shipped to:

Wolverine Worldwide Canada ULC

6225 Millicreek Drive

Mississauga ON L5N 0G2

SAUCONY, in its sole discretion, will determine whether the goods are defective. If Customer does not provide the invoice number at the time of return request, SAUCONY shall credit Customer for defective returns at the prices prevailing on the date the credit is issued.

RETURN TO STOCK

All returns to stock of SAUCONY goods must be authorized in advance by SAUCONY Customer Service. Request for authorization to return SAUCONY goods must be made within thirty (30) days from the date of SAUCONY's invoice. SAUCONY's shipping order number or invoice number shall be required on all return to stock claims. SAUCONY will issue the appropriate number of SAUCONY return authorization labels to Customer. All returns to stock must have a valid SAUCONY return authorization label affixed to the outside of each carton. Cartons delivered without a valid SAUCONY return authorization label will be refused by SAUCONY. All returns to stock must be shipped prepaid. If the return to stock is due to a SAUCONY error, SAUCONY shall credit Customer for the return shipping charges upon receipt of Customer's freight bill. If return is due to a packing or shipping error, the original packing slip must be included with the return authorization. Without the packing slip, SAUCONY shall credit all returns to stock at prices prevailing on the date

credit is issued. All returns to stock will be assessed a fifteen percent (15%) restocking charge unless the SAUCONY goods were shipped in error by SAUCONY.

Authorized new (return or stock) returns are shipped to:

Wolverine Worldwide Canada ULC

6225 Millicreek Drive

Mississauga ON L5N 0G2

Additional charges will be assessed if re-boxing, unlacing, re-bagging or removal of Customer tags is necessary.

REFUSED SHIPMENTS

Freight charges and restocking fees may be applied to refused shipments.

CLOSEOUTS

All SAUCONY merchandise that was shipped with Customer consent will not be considered for return. The shipments are on a ship and cancel basis and are final at the time of shipment.

CONSIGNMENT INVENTORY

SAUCONY does not sell inventory on consignment. Customer is responsible for acceptance and payment of inventory sold under Terms and Conditions stated here.

TRANSSHIPPING

Customer shall not sell SAUCONY goods to another retailer, distributor or broker; within or outside of the United States, without SAUCONY's expressed written consent. Violation of this condition may result in termination of Customer's account and legal action.

DISTRIBUTION CHANNELS

Customer is prohibited from either (1) selling any SAUCONY products, through telephone solicitations, mail and direct order solicitations, on or in connection with catalogs, or through electronic commerce or any other electronic means (including but not limited to the Internet or any on-line services); or (2) advertising or promoting any SAUCONY products, or in any manner using the SAUCONY name or any mark or logo of SAUCONY, by electronic commerce or any other electronic means (including but not limited to the Internet or any on-line services), without the prior written approval of SAUCONY for any such sales or advertisements. SAUCONY may grant or withhold approval in its sole discretion, and any approval shall be subject to such terms and conditions as SAUCONY deems desirable.

>> POLICIES & PROGRAMS

The following policies and programs are not part of the Terms & Conditions above.

MAP POLICY

SAUCONY maintains a unilateral MAP (minimum advertised pricing) policy, which is enforced throughout all distribution channels to authorized dealers. Exhibits which provide specific style details maintained under this policy's terms are updated on a regular basis and made available at:

www.saucony.box.com/MAP



Fall 2020 quantity program

600 & 1200 PAIR ORDERS:

- One stock number (style, color, gender, width) per order.
- One delivery date per order.
- All quantities per size must be written in 6-pair or 12-pair cases. Entire order (all sizes) must maintain the same case pack quantities.

2400 & 6000 PAIR ORDERS:

- One style family per order, but orders can be written for multiple stock numbers within this style family, with a minimum of 1200 pairs per stock number.
- One delivery date – for delivery of all stock numbers within an order.
- All quantities per size written in 6-pair or 12-pair cases. Entire order - all stock numbers and sizes per stock number must maintain the same case pack quantities.

DELIVERY REQUIREMENTS:

- Standard Direct Pricing is based upon West Coast delivery. Retailer pick-up will take place at Saucony's West Coast shipping point, and title transfer will take place x-warehouse when the order is loaded onto the retailers' designated carrier.
- In-land deliveries can be accommodated from Louisville Kentucky. But there is a direct delivery pricing surcharge of \$1.00 per pair. In-land deliveries must maintain all the same characteristics of a West Coast delivery with the order ready to go as packed at the factory.

PROGRAM REQUIREMENTS:

- Order lead time is 5 months from the receipt of the retailer's official order which complies with all Saucony Direct Quantity requirements.
- Saucony will review the retailer's order and will confirm acceptance if all requirements are met.
- Upon acceptance, orders cannot be altered in any form
- Confirmed orders cannot be canceled or delayed.
- Case packs per each size can be packed as single sizes per case or in musical runs. Within an order, each individual stock number must be packed in a consistent configuration.
- Payment terms for all orders are Net 30.

SAUCONY, Inc.

500 Totten Pond Rd.

Waltham, MA 02451

Headquarters: 617-824-6000

Toll Free Fax Order Number:

800-493-6733

Toll Free Order Phone Number:

800-305-8199

saucony | **run for good**